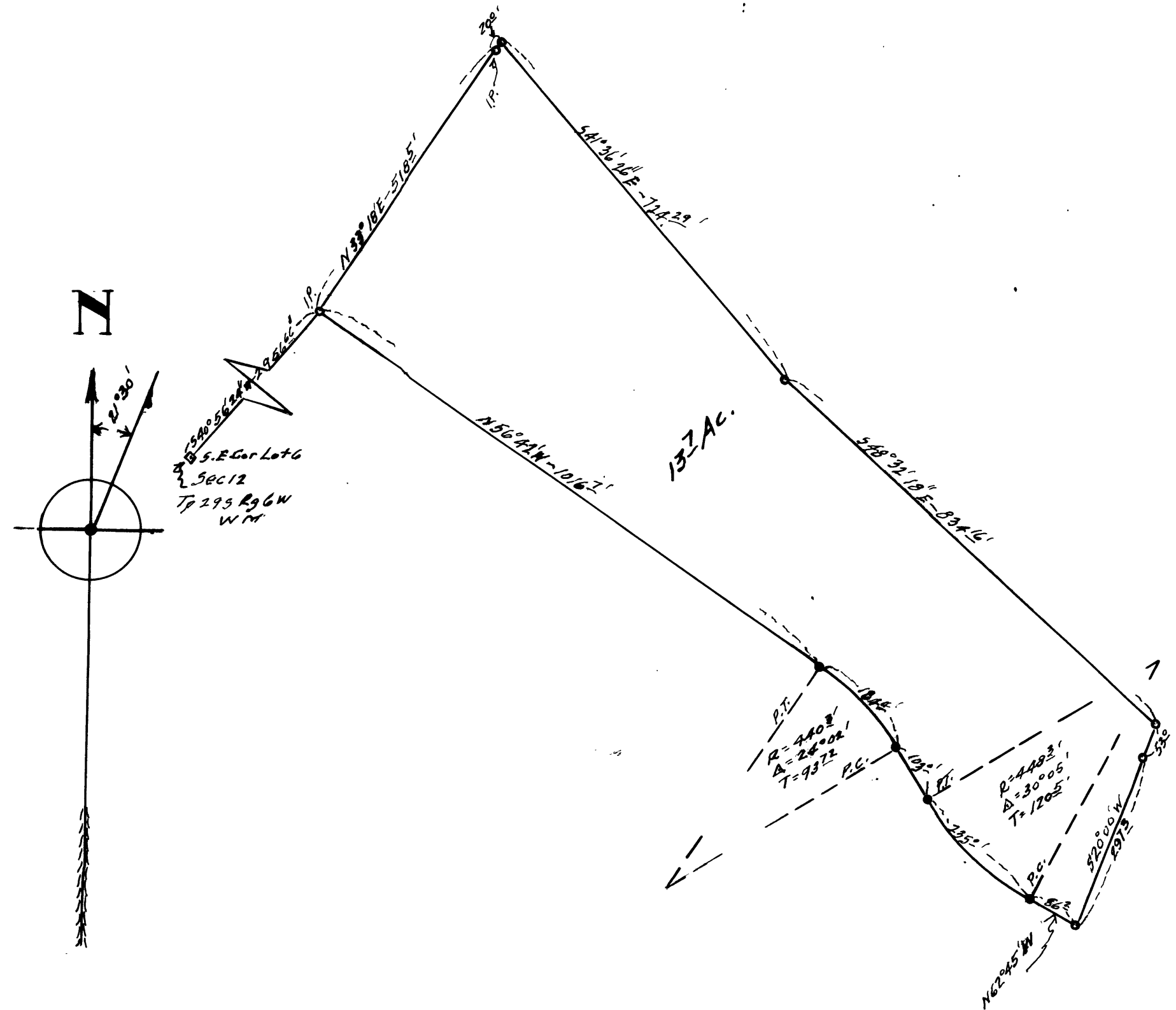


COUNTY SURVEYORS FILE DATA
DO NOT REMOVE FROM OFFICE

MAP
OF
PORTION OF HELGESEN RANCH
Sec. 7 TP-295-Rg. 5 W.W.M.
Scale 1/2"=200' Feb. 1951.



FILED
RECEIVED

JUN 3 1961

COUNTY SURVEYOR
DOUGLAS COUNTY, ORE.

CS FILE FOLDER

CONTAINS

MORE

INFORMATION