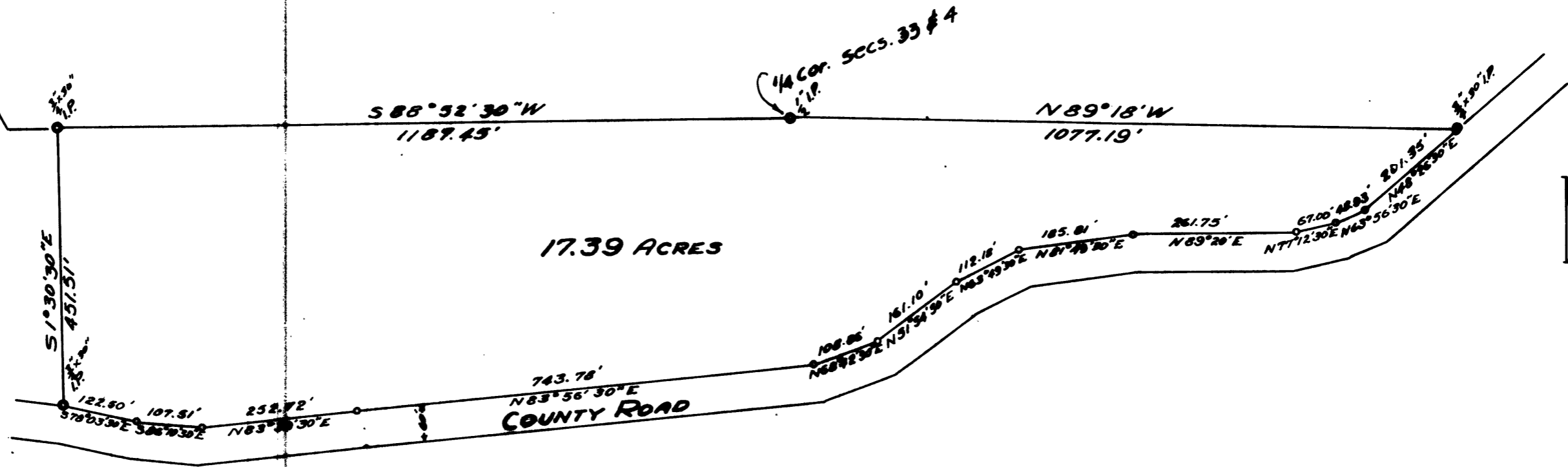


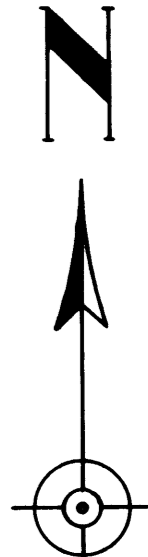
52 | 33 S 88° 52' 30" W
5 | 4 1377.58'



17.39 ACRES

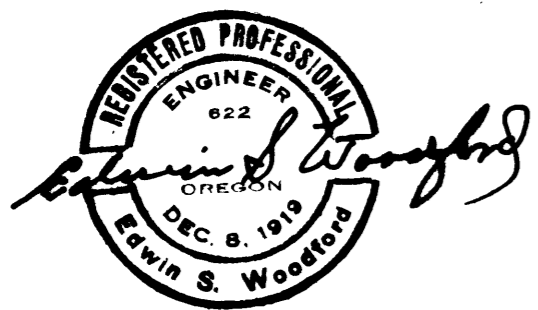
COUNTY ROAD

1/4 COR. SECS. 33 & 4



MAP
OF
A PORTION OF J.F. TAVENNER PROPERTY
SEC. 4, TWP. 29 S, R4W, W.M.
SURVEYED - Nov. 1947.

Scale - 1-inch = 200 ft.



COUNTY SURVEYORS FILE DATA
DO NOT REMOVE FROM OFFICE

FILED
RECEIVED
JUN 9 1961
COUNTY SURVEYOR
DOUGLAS COUNTY, ORE.

c.s. 40/460-8

-33-

CS FILE FOLDER

CONTAINS

MORE

INFORMATION