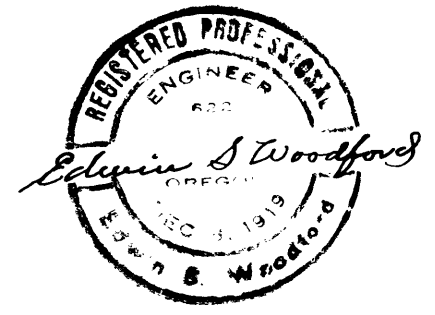
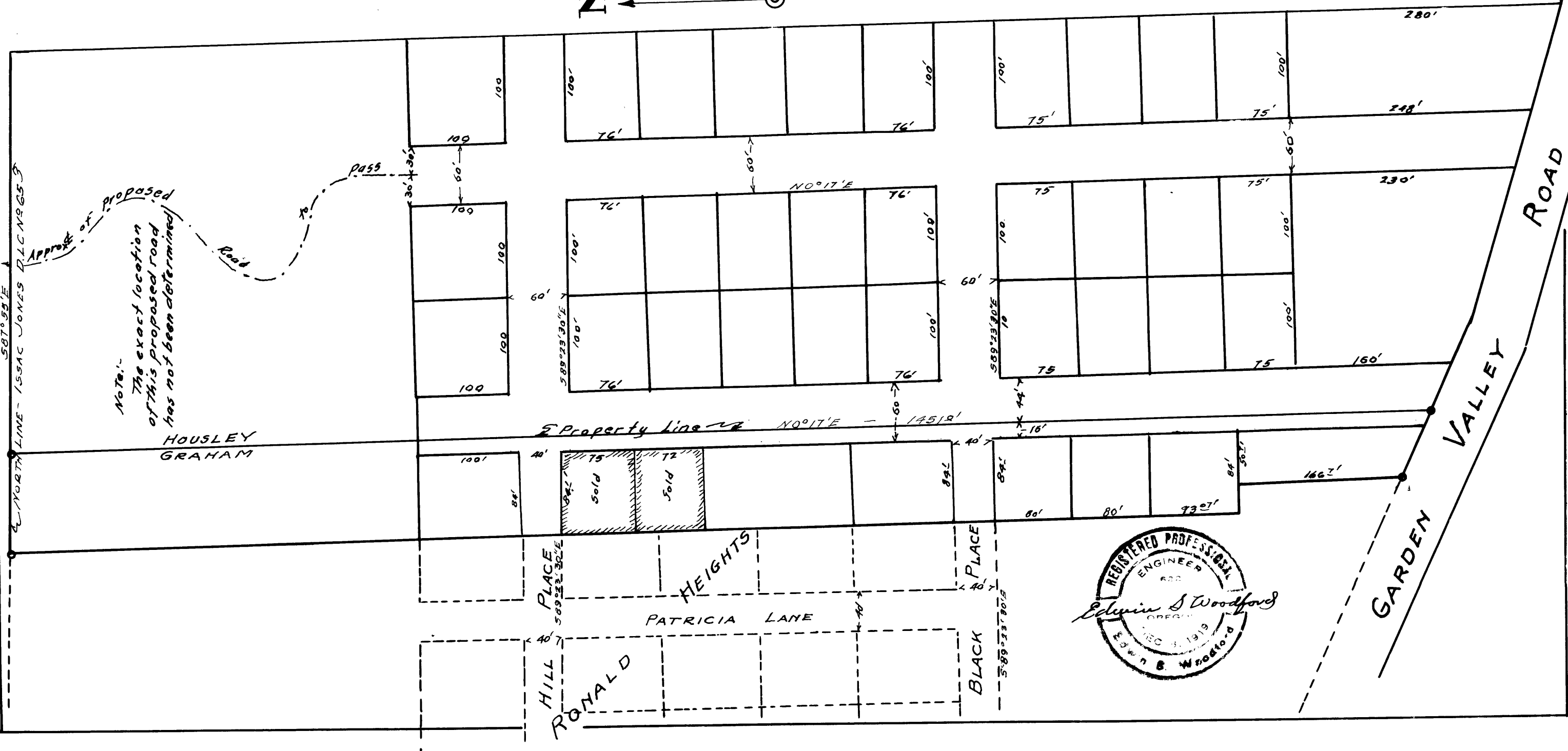


COUNTY SURVEYORS FILE DATA  
DO NOT REMOVE FROM OFFICE

PROPOSED SUBDIVISION  
OF  
THE J.M. HOUSLEY AND HUBER GRAHAM  
PROPERTIES  
IN  
SECTIONS 11+12 Tp. 27S - Rg. 6W WM.  
Scale - 1" = 100.'

FILED  
RECEIVED L.L.  
JUL 1919

COUNTY SURVEYORS  
CLATSOP COUNTY, OREGON



-26-

C.S. File No. 40/458

587°58'E  
NORTH LINE - ISSAC JONES D.L.C. 1965

Notes:  
The exact location  
of this proposed road  
has not been determined

HOUSLEY  
GRAHAM

Property line N0°17'E - 14512'

HILL PLACE  
RONALD

PATRICIA LANE

BLACK PLACE

GARDEN VALLEY ROAD

CS FILE FOLDER

CONTAINS

MORE

INFORMATION