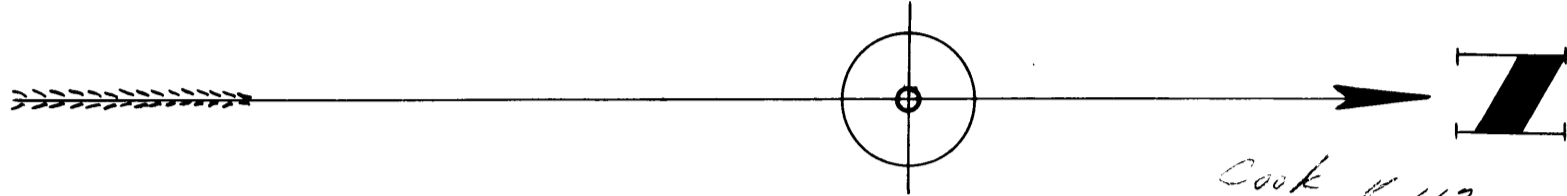


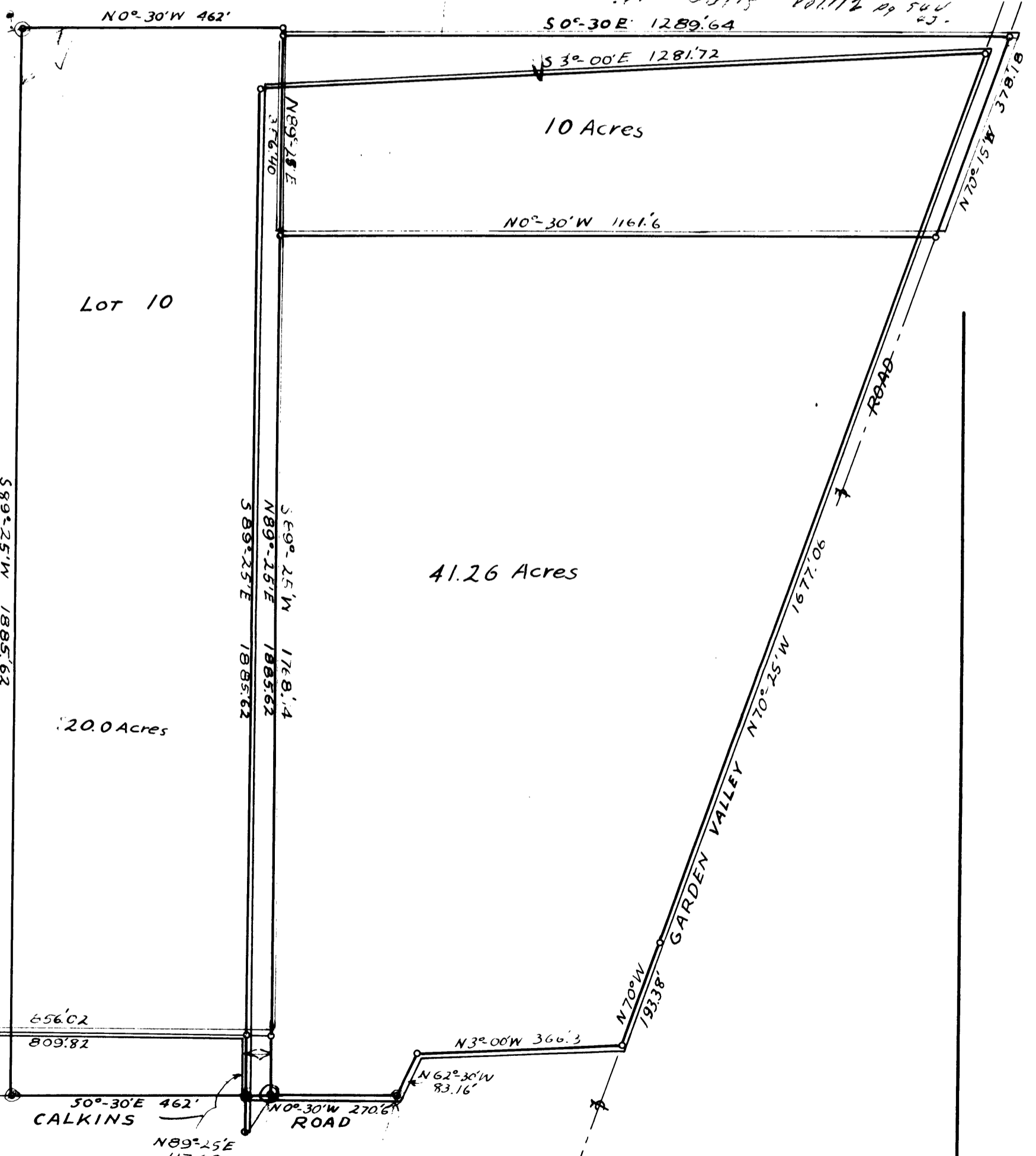
MAP
OF PROPERTY OF MRS. C. SANFORD
AS TAKEN FROM CO. COURT RECORDS
SEC. 11, T27S, R6W, WM
SCALE: 1 inch = 200 feet

FILED
RECEIVED
JUL 2 1917
COUNTY SURVEYOR
DEKALB COUNTY, GA.



Cook v 112 p 542

D.W. Butts Vol. 112 p 542



1/4 Cor. Sec. 1/4

462.02
394.02
554.02
809.82
1662.00

Vol. 24 p 78
Probate Records

CS FILE FOLDER

CONTAINS

MORE

INFORMATION