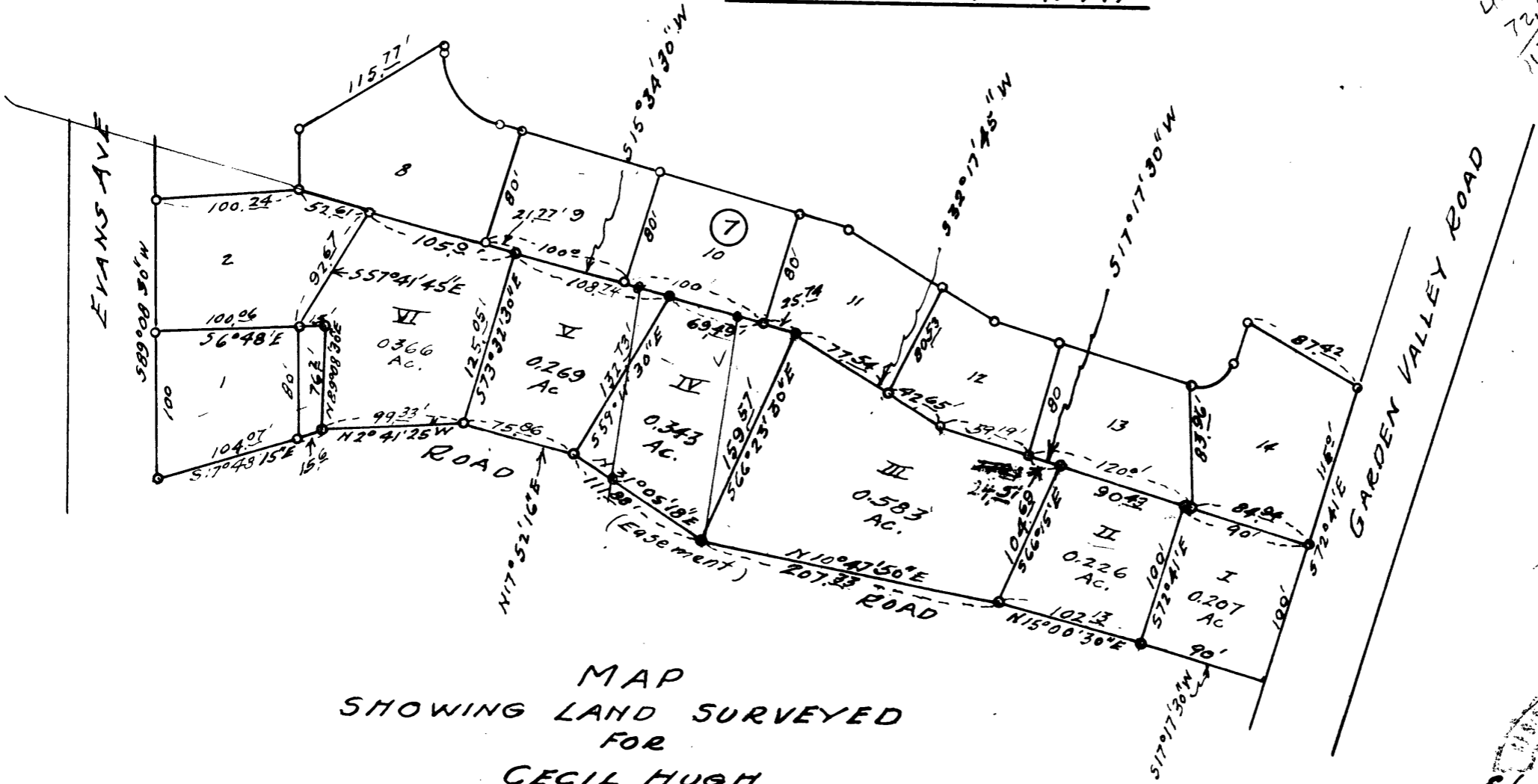


HUCREST-PLATA.



$$\begin{array}{r} 40.57 \\ 72.85 \\ \hline 113.42 \end{array}$$

$$\begin{array}{r} 69.59 \\ 25.74 \\ \hline 95.23 \end{array}$$

$$\begin{array}{r} 40.57 \\ 2 \\ \hline 81.14 \end{array}$$

$$\begin{array}{r} 72.85 \\ 2 \\ \hline 145.70 \end{array}$$

$$\begin{array}{r} 93.13 \\ 92.67 \\ \hline .46 \end{array}$$

$$\begin{array}{r} 2760 \\ 286 \\ \hline 1000 \\ 51.50 \end{array}$$

MAP  
 SHOWING LAND SURVEYED  
 FOR  
 CECIL HUGH  
 SECTION 11 TP. 27S-R6.6W WM.  
 Scale-1"=100'.  
 OCTOBER 1954.



cs40/453-4

PRINT MADE  
 FROM 42/116

CS FILE FOLDER

CONTAINS

MORE

INFORMATION