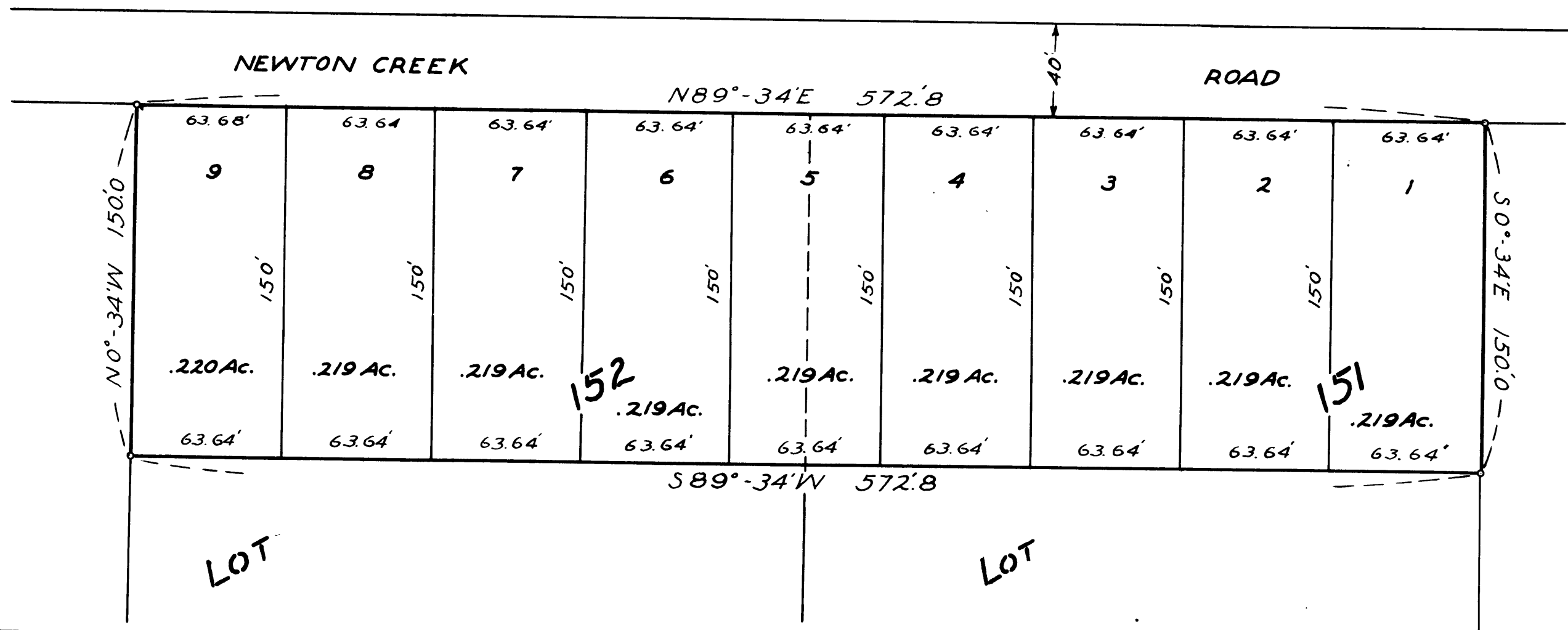
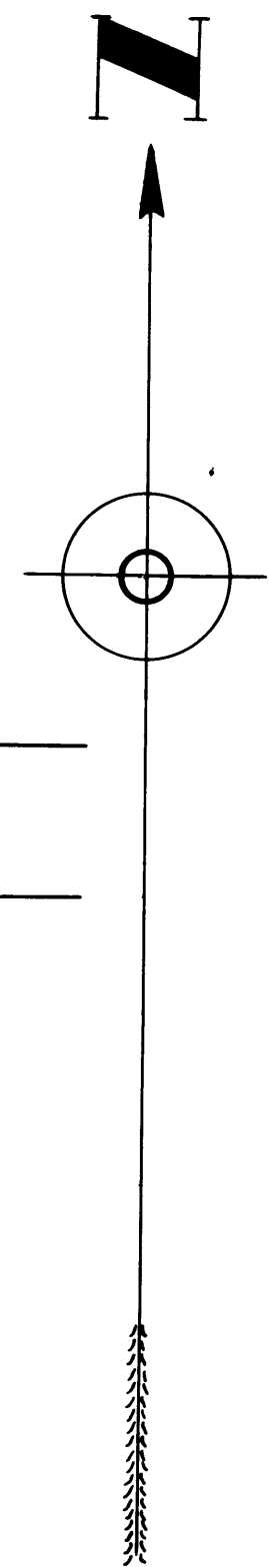


COUNTY SURVEYORS FILE DATA
DO NOT REMOVE FROM OFFICE

MAP
SHOWING SUBDIVISION
OF PARTS OF LOT 151 AND LOT 152
ROSEBURG ORCHARD COMPANY
SEC. 6 ^{and} 7, T27S, R5W, WM
SCALE 1/4 inch = 50 feet

FILED
RECEIVED
JUN 9 1961
COUNTY SURVEYOR
DOUGLAS COUNTY, ORE.

C.S. 40/449-2



CS FILE FOLDER

CONTAINS

MORE

INFORMATION