

COUNTY SURVEYORS FILE DATA
DO NOT REMOVE FROM OFFICE

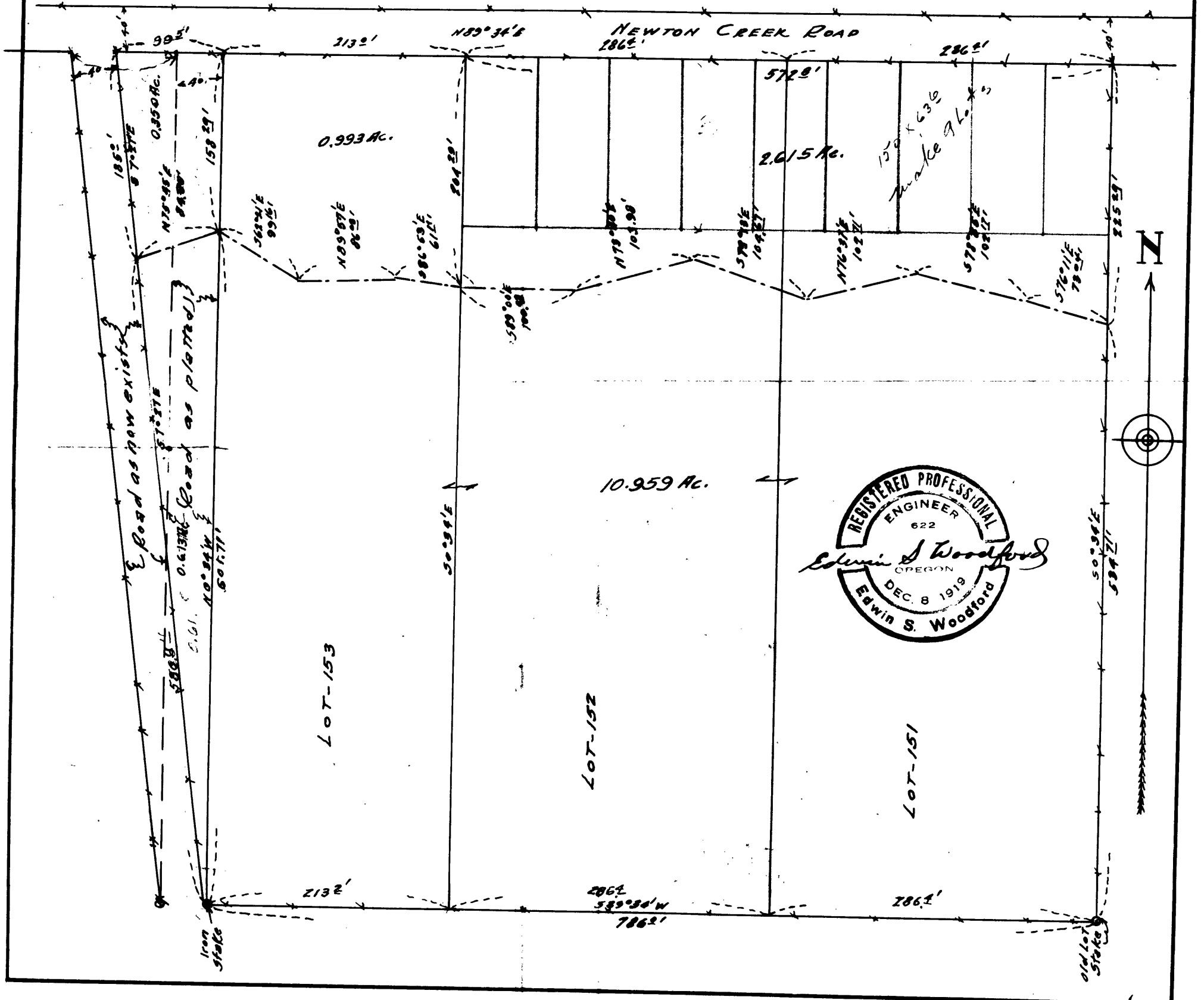
REITMAN
MAP
OF

FILED
RECEIVED

JUN 9 1961

LOTS - 151 - 152 - 153 - TRACT 1 - PLAT 1.
ROSEBURG ORCHARD COMPANY.
Sec. 6th 7 Tp. 27 S - Rg 5 W WM.
Scale - 1" = 100'

COUNTY SURVEYOR
DOUGLAS COUNTY, ORE.



C.S. 40/449-1

CS FILE FOLDER

CONTAINS

MORE

INFORMATION