

FILED  
RECEIVED

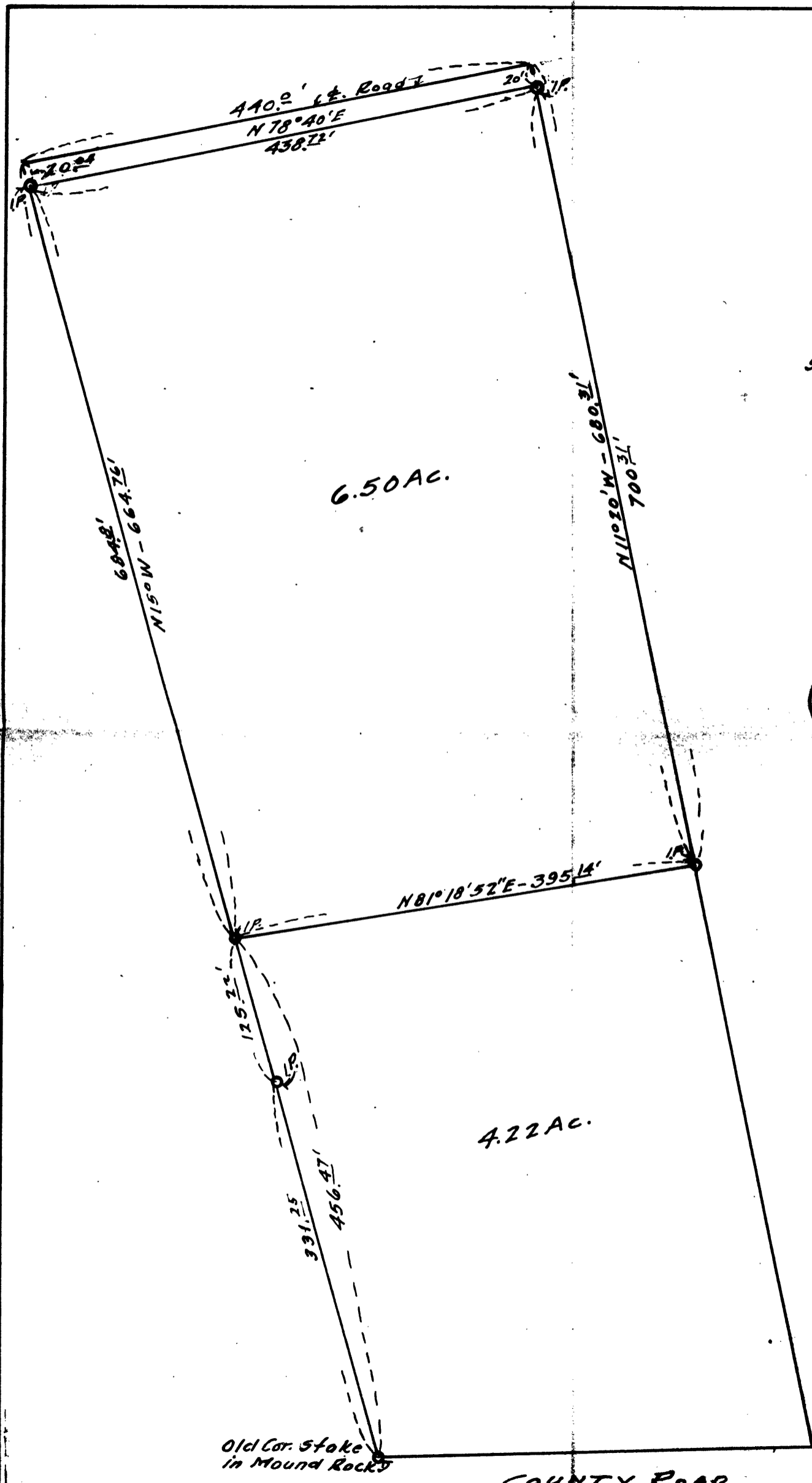
JUN 9 1961

COUNTY SURVEYOR  
MAP DOUGLAS COUNTY, ORE.

OF  
PORTION OF LOT 21  
PLAT C

N. CURRY ESTATE

Scale - 1" = 100' May 1951.



Old Cor. Stake  
in Mound Rock

COUNTY ROAD

T 26 - 6W

C.S. 40/447

CS FILE FOLDER

CONTAINS

MORE

INFORMATION