

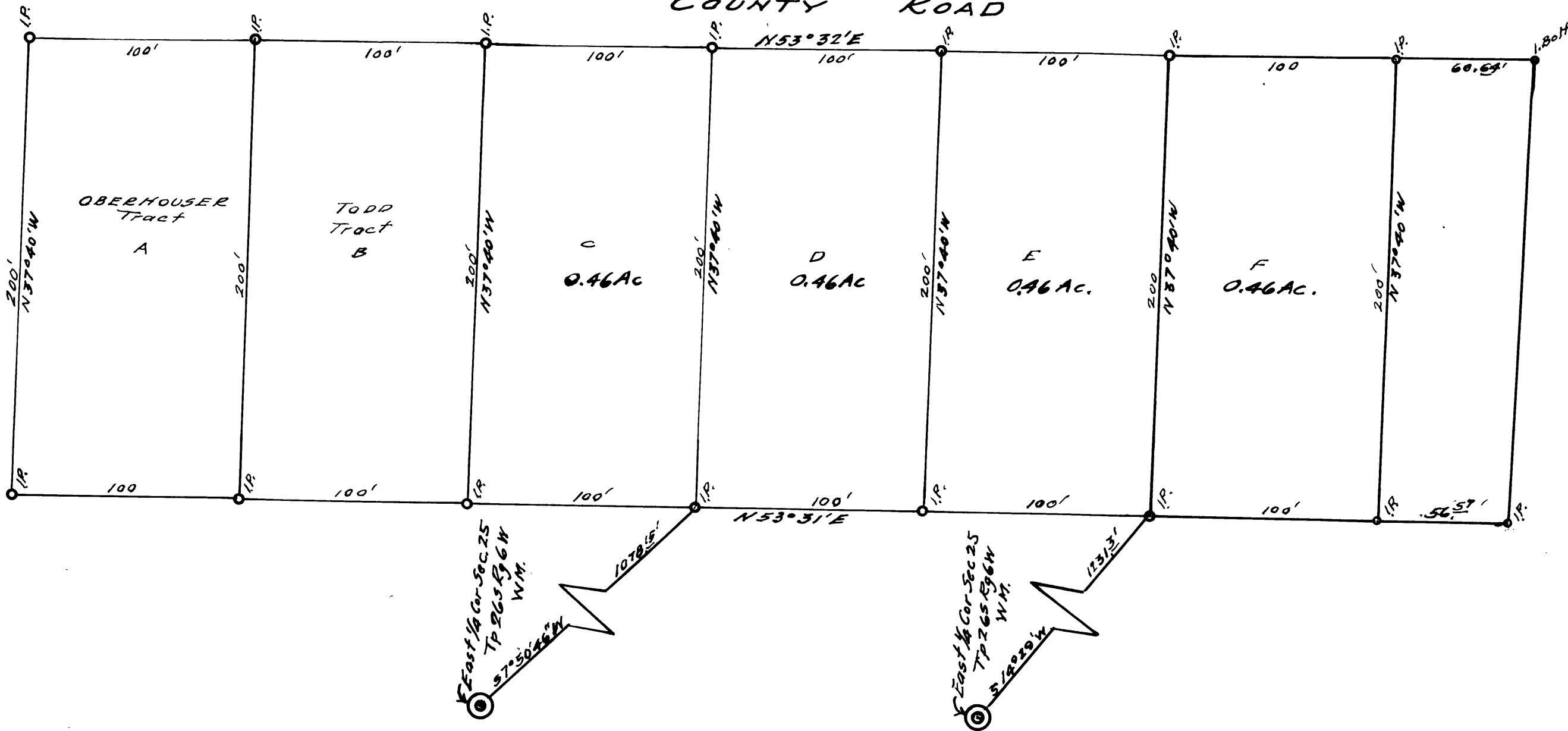
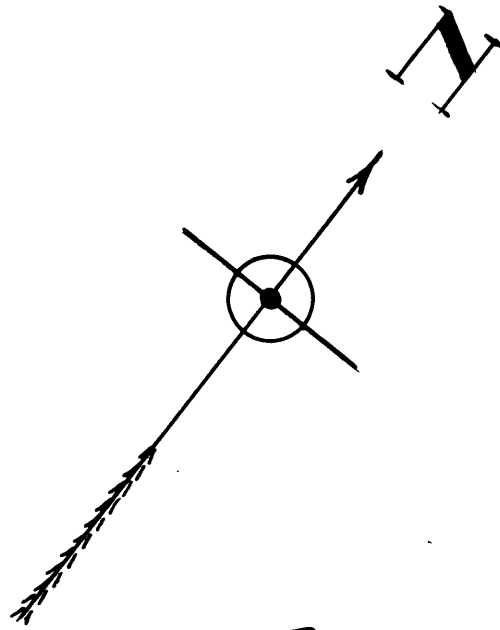
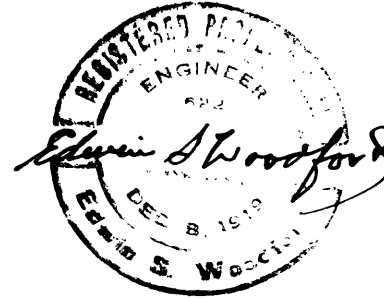
COUNTY SURVEYORS FILE DATA
DO NOT REMOVE FROM OFFICE

MAP
Showing Lands Surveyed
in
Sec. 30 Tp. 26 S Rg. 5 W W.M.
For
John Amacher
April 1951. Scale - 1" = 50'

FILED
RECEIVED

JUL 10 1951

COUNTY SURVEYOR
DOUGLAS COUNTY, ORE.



CS FILE FOLDER

CONTAINS

MORE

INFORMATION