

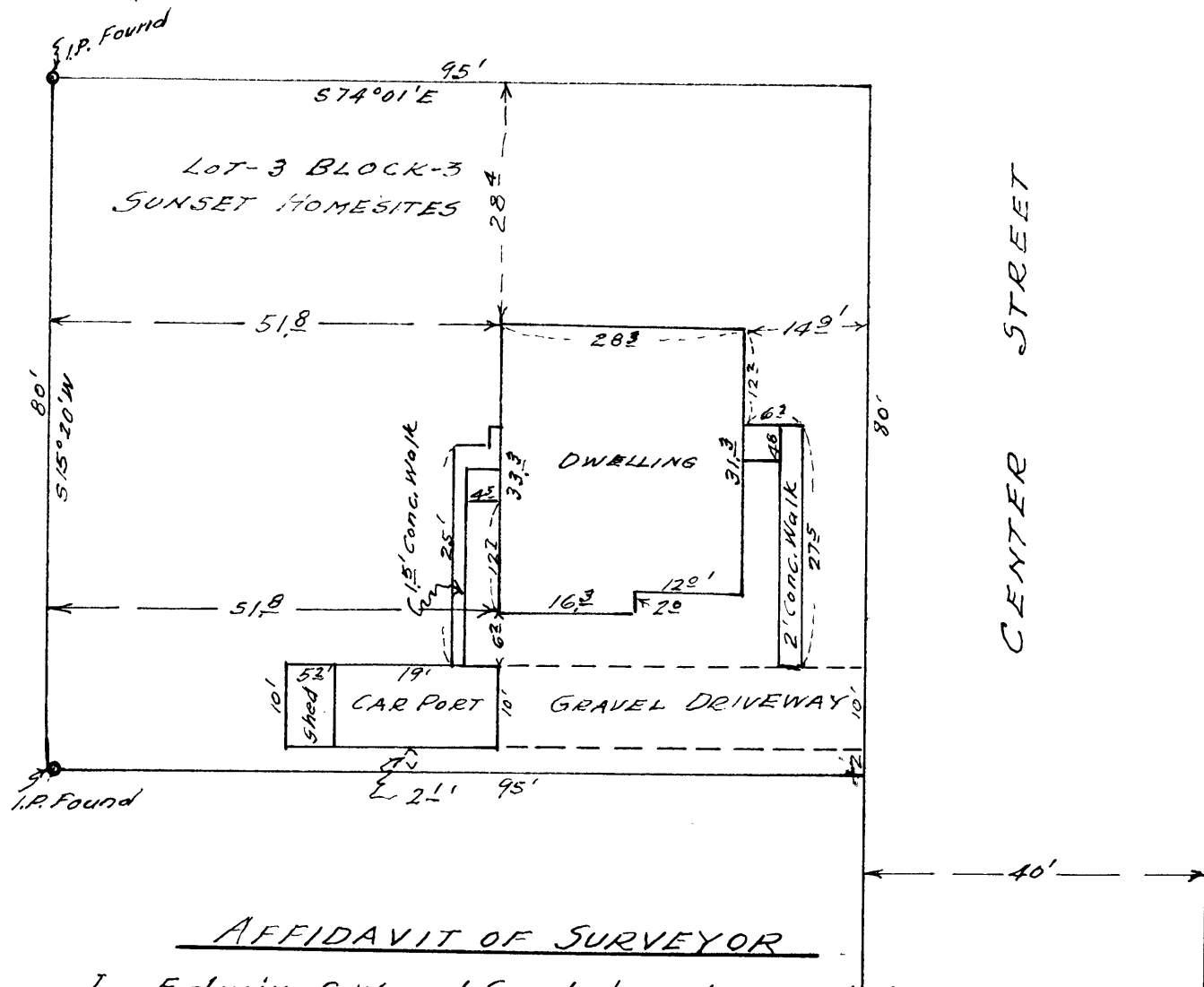
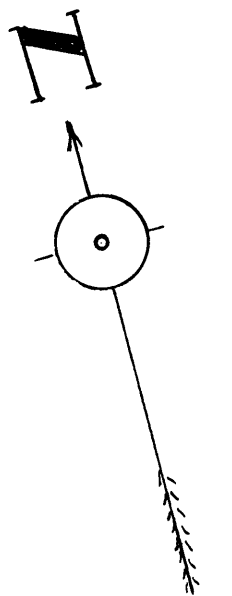
COUNTY SURVEYORS FILE DATA
DO NOT REMOVE FROM OFFICE

MAP
SHOWING LOCATION
OF
DWELLING
ON

LOT-3 BLOCK-3 SUNSET HOMESITES
SECTIONS 14 & 15 T.P. 275-R. 6 W. W.M.

Scale - 1" = 20'

JANUARY 1956.



AFFIDAVIT OF SURVEYOR

I, Edwin S. Woodford, hereby certify
that the annexed Map correctly shows
the location of the Improvements on
LOT-3 BLOCK 3 - SUNSET HOMESITES in
Sections 14 & 15 T.P. 275-R. 6 W. W.M.

Signed this 17th day of January 1956.

Edwin S. Woodford
Reg. Prof. Eng. 622.

Edwin S. Woodford

C.S. 40/441-5