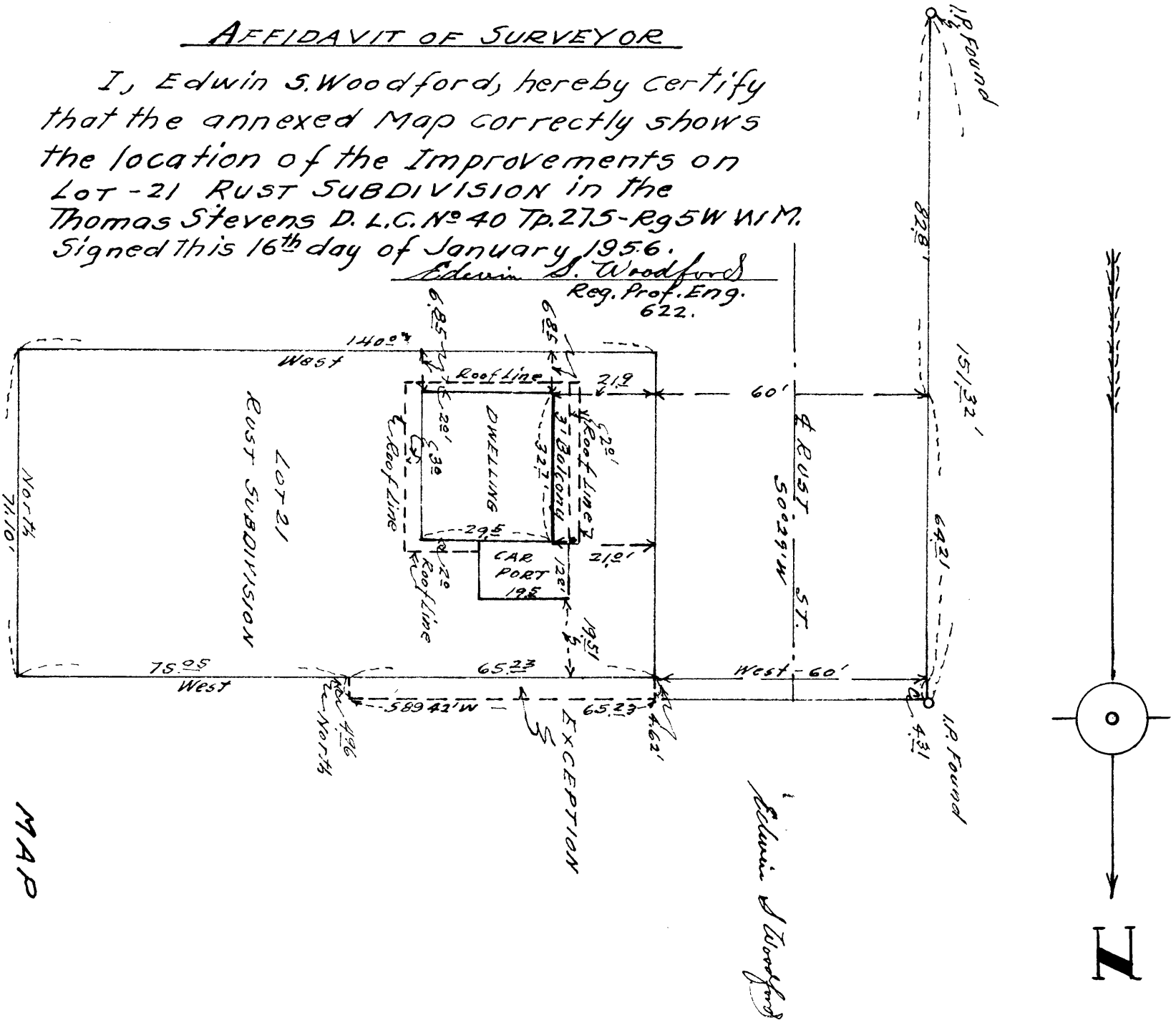


AFFIDAVIT OF SURVEYOR

I, Edwin S. Woodford, hereby certify that the annexed Map correctly shows the location of the Improvements on Lot - 21 RUST SUBDIVISION in the Thomas Stevens D. L.C. No 40 Tp. 27S - R95W W.M. Signed this 16th day of January 1956.

Edwin S. Woodford
Reg. Prof. Eng. 622.



MAP

SHOWING LOCATION OF DWELLING ON

LOT 21 - RUST SUBDIVISION

THOMAS STEVENS D. L.C. No 40
TP. 27S - R95W W.M.

Scale - 1" = 30' January 1956.

COUNTY SURVEYORS FILE DATA
DO NOT REMOVE FROM OFFICE

C.S. 40/441-4