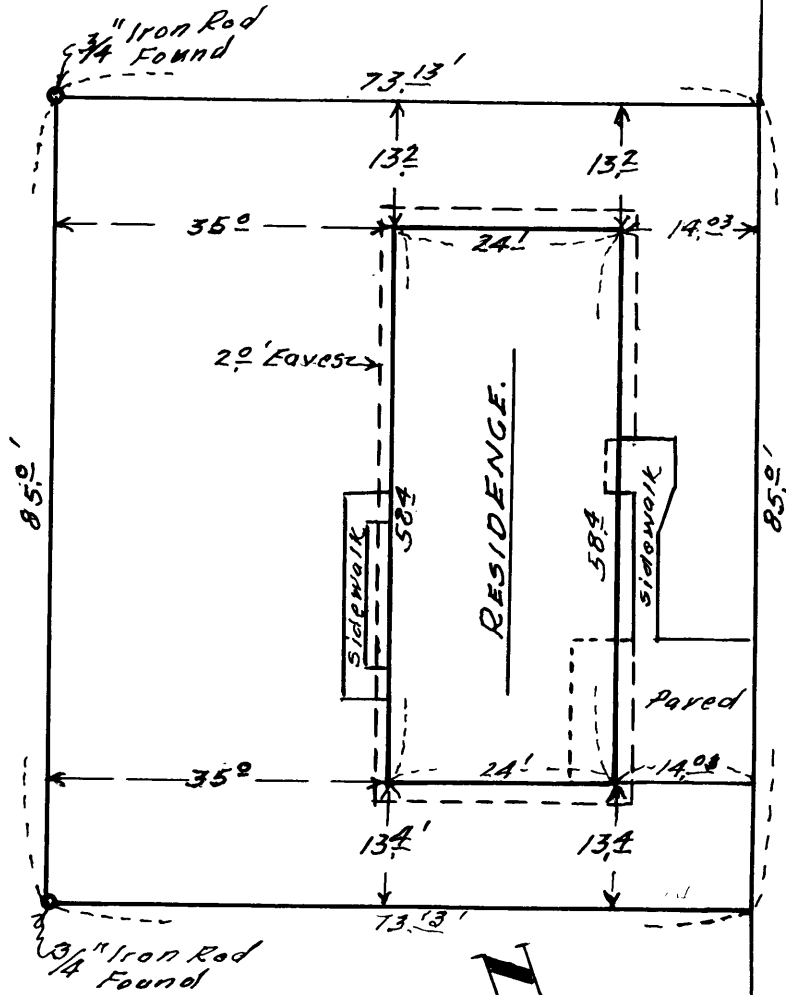


AFFIDAVIT OF SURVEYOR

I, EDWIN S. WOODFORD
hereby certify that the annexed
map correctly shows the location
of the improvements on Lot 6
of KERBER ADDITION IN Section
14 Tp. 27S-Rg. 6W WM.

SIGNED this 20th day of December
1955.

Edwin S Woodford
Reg. Prof. Eng. - No 622.



BODIE LANE

MAP
SHOWING IMPROVEMENTS
ON
Lot 6 KERBER ADDITION
Sec 14 TP. 27S-Rg. 6W WM.
Scale - 1" = 100' Dec. 1955.



COUNTY SURVEYORS FILE DATA
DO NOT REMOVE FROM OFFICE