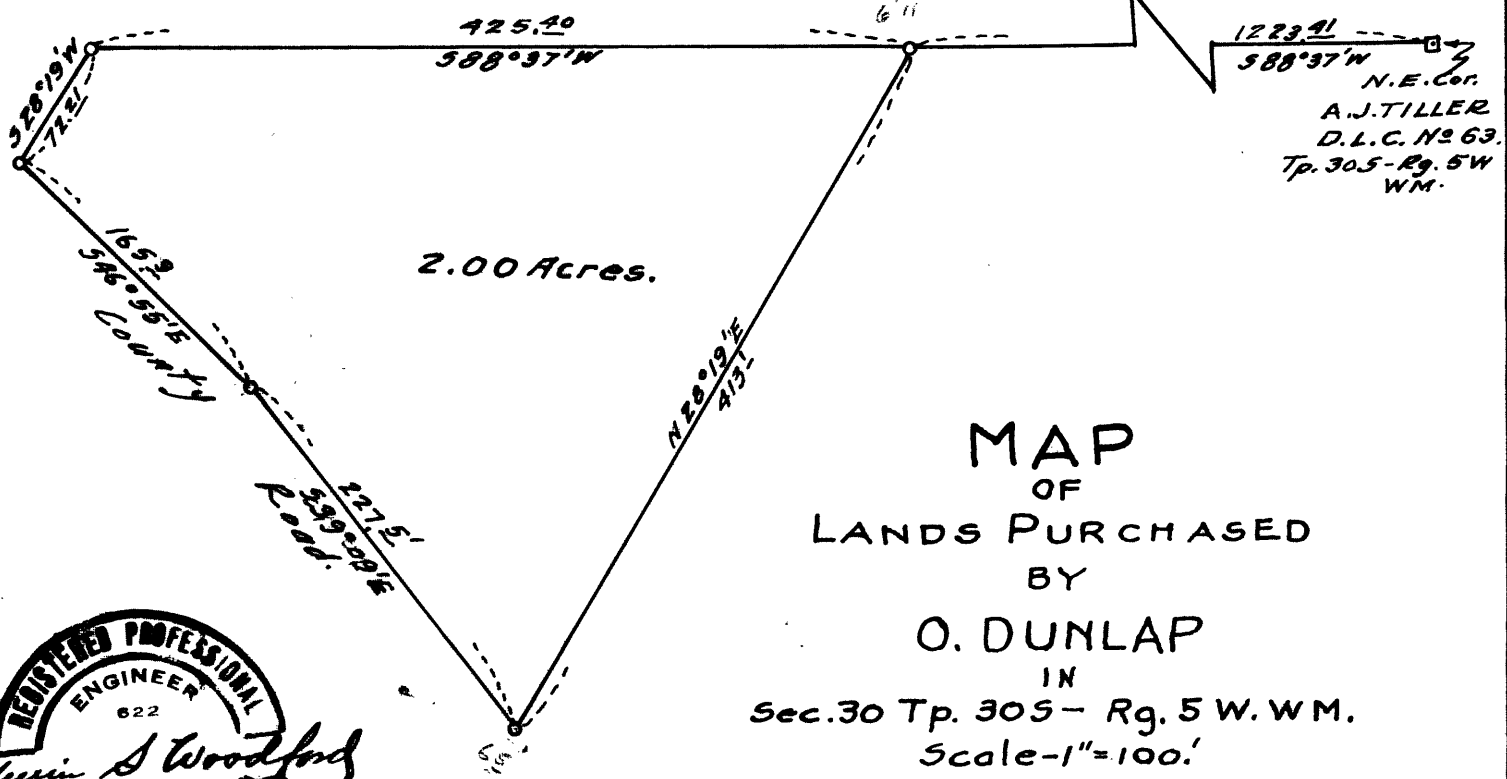
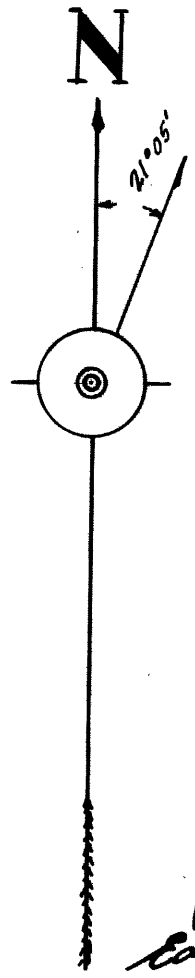


FILED  
RECEIVED 7/2

AUG 25 1972.

COUNTY SURVEYOR  
DOUGLAS COUNTY, ORE.

C. S. File No. 50/439

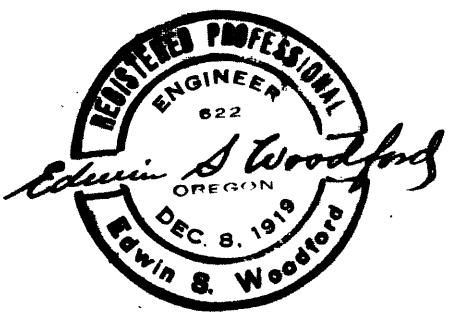


MAP  
OF  
LANDS PURCHASED  
BY

O. DUNLAP

IN  
Sec. 30 Tp. 30S - Rg. 5 W. W.M.  
Scale - 1" = 100'

COUNTY SURVEYORS FILE DATA  
DO NOT REMOVE FROM OFFICE



C. S. File No. C. S. 50/439

CS FILE FOLDER

CONTAINS

MORE

INFORMATION