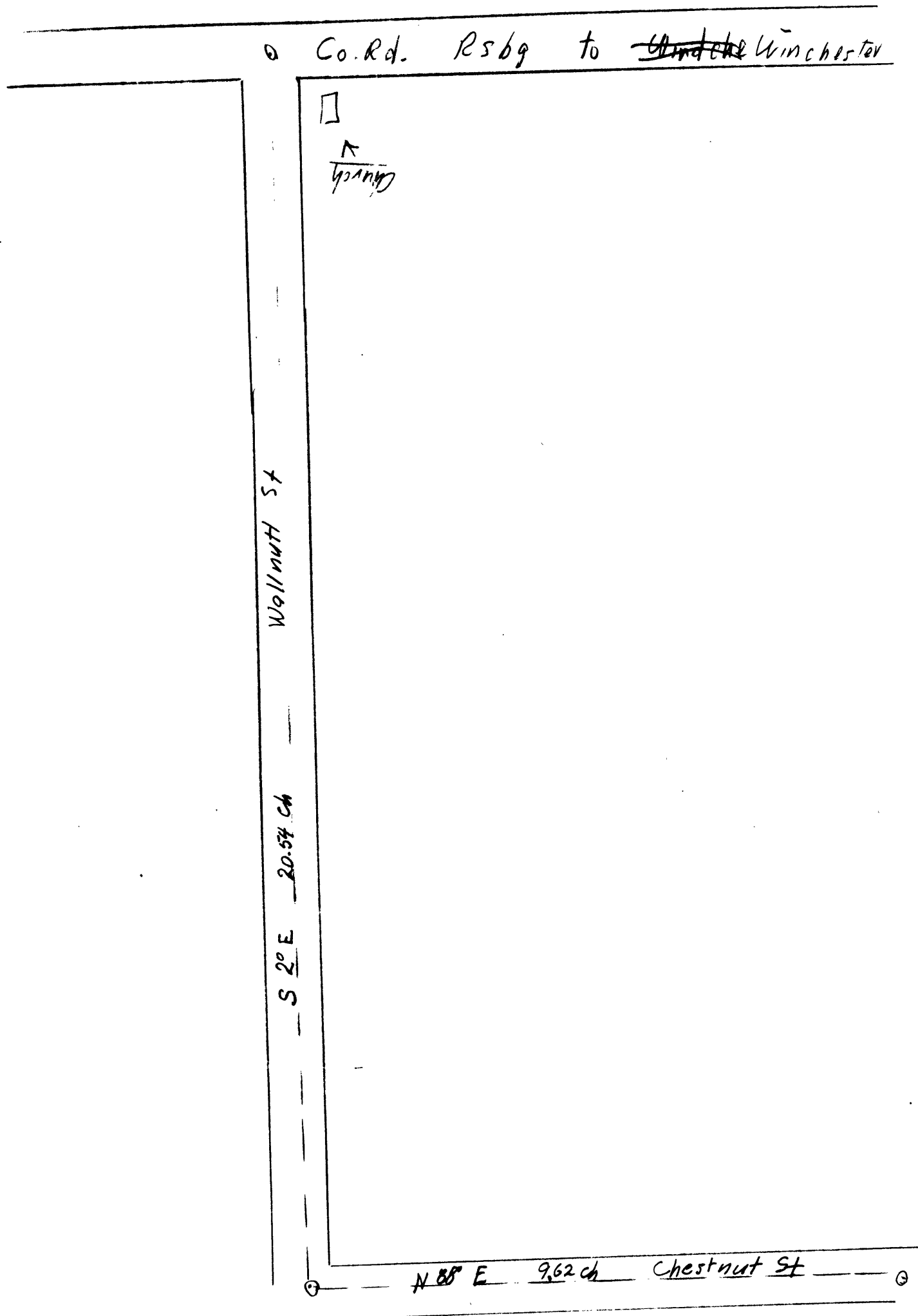


C.S. 40/431



Heimer & LeDices

1911

By a pt on E of Co. Rd. to Winchester. set post mld. R
 From which N.E. Cor Lot 7 Blk 17 Riverside Bldg. S 45 1/4° W 63.165
 thence S 2° E 20.54 ch

N 88° E 9.62 ch to intersection of lands deeded
 by John Roachman Jr. to Bury. G for road purposes.

Vol 20-526
 Vol 26-582
 Vol 39-241
 Vol 42-159

Vol 43-635
 Vol 50-458 - to Bury Co.
 Vol 58-515 - Riverside
 Vol 66-475 to M. Kemmer

CS FILE FOLDER

CONTAINS

MORE

INFORMATION