

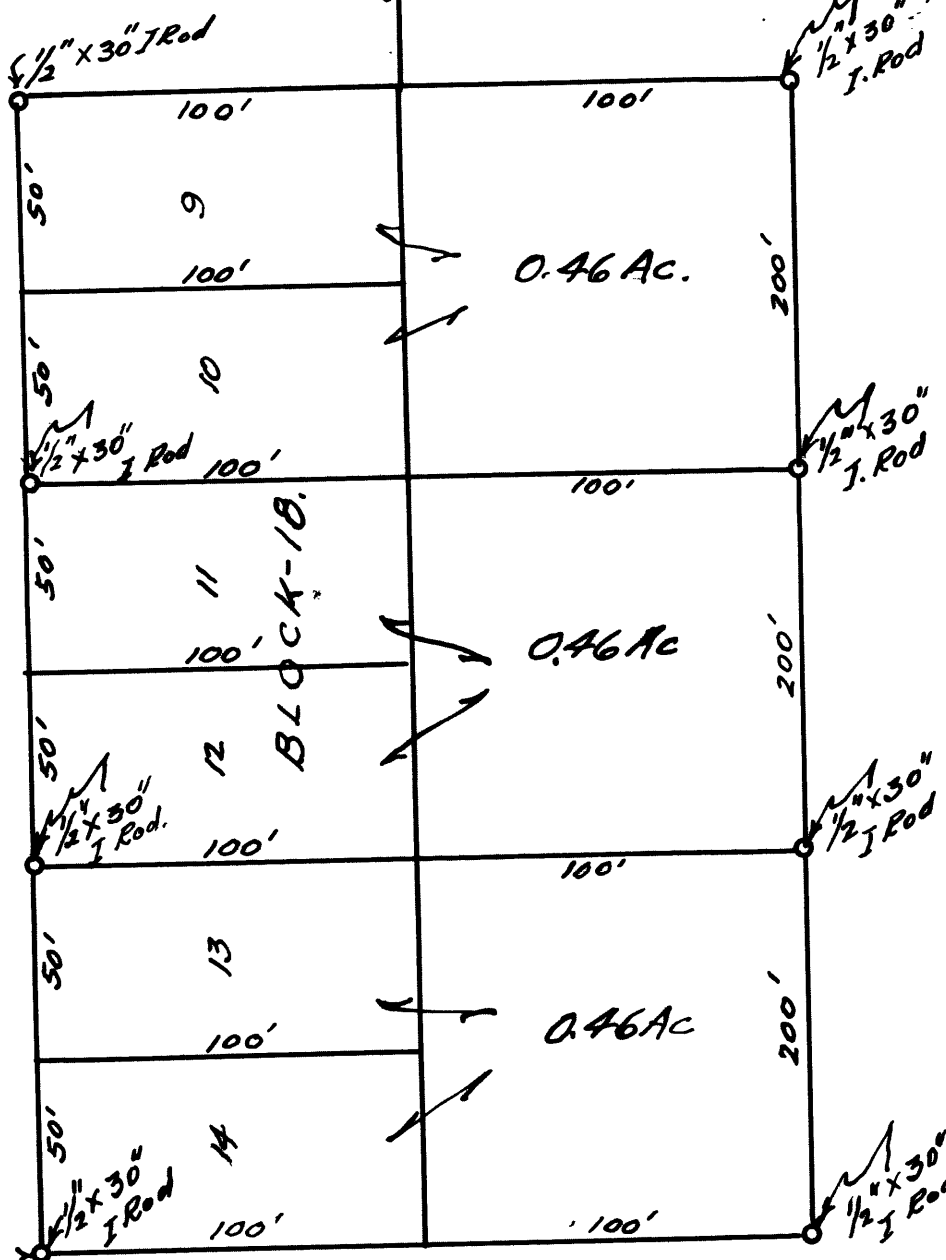
MAP
OF PORTION
FRED MILLER PROPERTY
RIVERSIDE ADDITION
TO
ROSEBURG OREGON
Scale - 1" = 50' July 1957.

COLLEGE ST.

ST.

WALNUT ST.

N



COUNTY SURVEYORS FILE DATA
DO NOT REMOVE FROM OFFICE



C.S. 40/426

CS FILE FOLDER

CONTAINS

MORE

INFORMATION