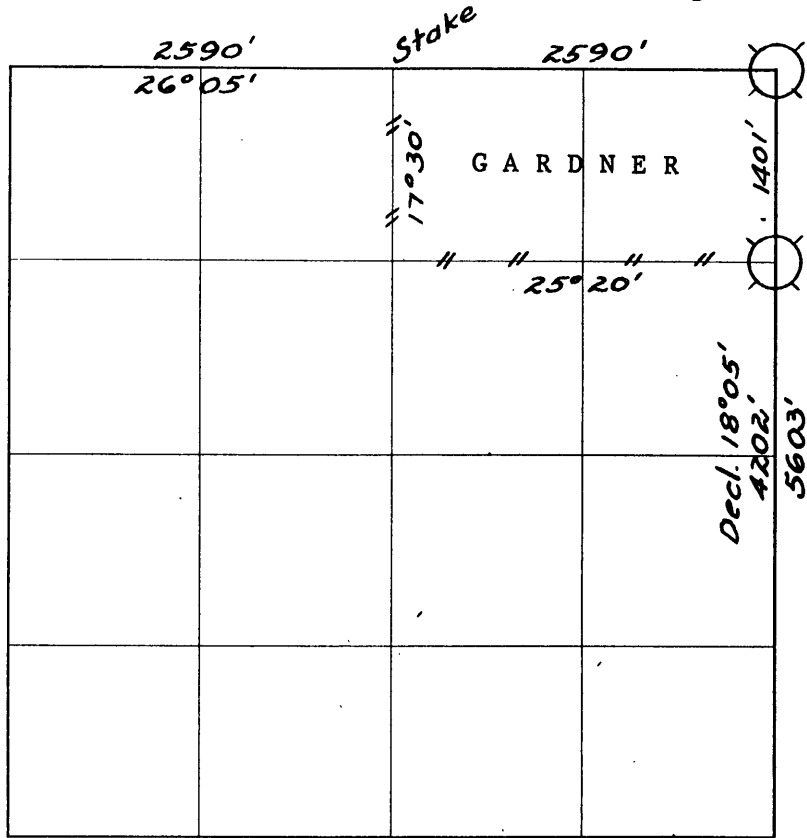


WEYERHAEUSER TIMBER COMPANY

Section 8 Township 26 S Range 2 W



— # — # — Line marked by notch cut in blaze



Known corner



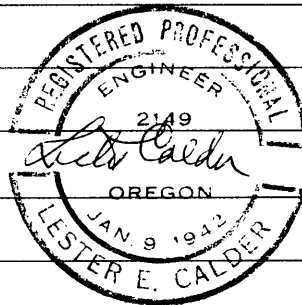
Referenced corner

Staff compass and abney slope chain survey

This information is supplemental to survey filed in Douglas

County Surveyor's Office on January 9, 1952 on

reestablishment of corner $\frac{5}{8} | \frac{4}{9}$ 26S-2W



Dates of survey October, 1953 & March, 1957 Date filed for record & where Apr. 8, 1957

Distribution Douglas County Surveyor's Office

- U. S. Plywood
- Weyerhaeuser
- O & C (2)
- Evans Products
- John Gardner

Reported March 11 19 57

By Lester Calder

Weyerhaeuser Timber Company Corner Reference Method

as referred to below consists of a 4.7" x 5.7" aluminum plate with embossed section plat nailed head high on the tree. Near base of tree a notch is cut and a square-headed nail with "W" on head driven through a hole in a 2½" brass disc stamped with the Oregon Registered Land Surveyor or Professional Engineer registration number. The distance and bearing stamped on aluminum plate refer to the "W" nail.

o o o o o o o o o o o o

Historical

In 1947 John Gardner came to the Weyerhaeuser Timber Company and asked for assistance in recovering certain lost corners of Section 8-26S-2W.

Attached plat dated January, 1952 shows boundary agreements between Gardner and Calder.

In 1952 Gardner became interested in the N½ of NE¼ and the survey recorded January 9, 1952 was initiated, completed and filed, showing the then apparent conditions.

In October, 1953 Price for Weyerhaeuser Timber Company and Gardner established the Northeast corner as accurately as possible from the recorded January 9, 1952 survey with staff compass. At that time they also set the N-1/16 between Sections 8 and 9. These two were referenced and here recorded.

At the same time a stake was set for the N¼ corner and lines red carded as shown on the West and South sides of the N½ of NE¼. In March, 1957 Glen McChesney for Weyerhaeuser and Harry Young for Evans Products blazed said West and South lines.

o o o o o o o o o o o o

5 | 4
8 | 9

Corner common to Sections 4,5,8 and 9-26S-2W

Set a 2½" square stake by double proportionate method as shown on plat attached to survey recorded January 9, 1952 and on plat attached to this survey record.

Referenced by Curtis Price (Weyerhaeuser Method)

- 34" Fir N 17° E 26.9'
- 32" Fir N 55° W 36.7'
- 10" Fir S 8° W 12.2'
- 20" Fir S 42½° E 37.1'

N 1/16

Corner for Sections 8 and 9 = Point "H"

Set 2" square Dogwood stake by single proportionate method.

Referenced by Curtis Price (Weyerhaeuser Method)

- 16" Hem. N 72° W 6.7'

5
8

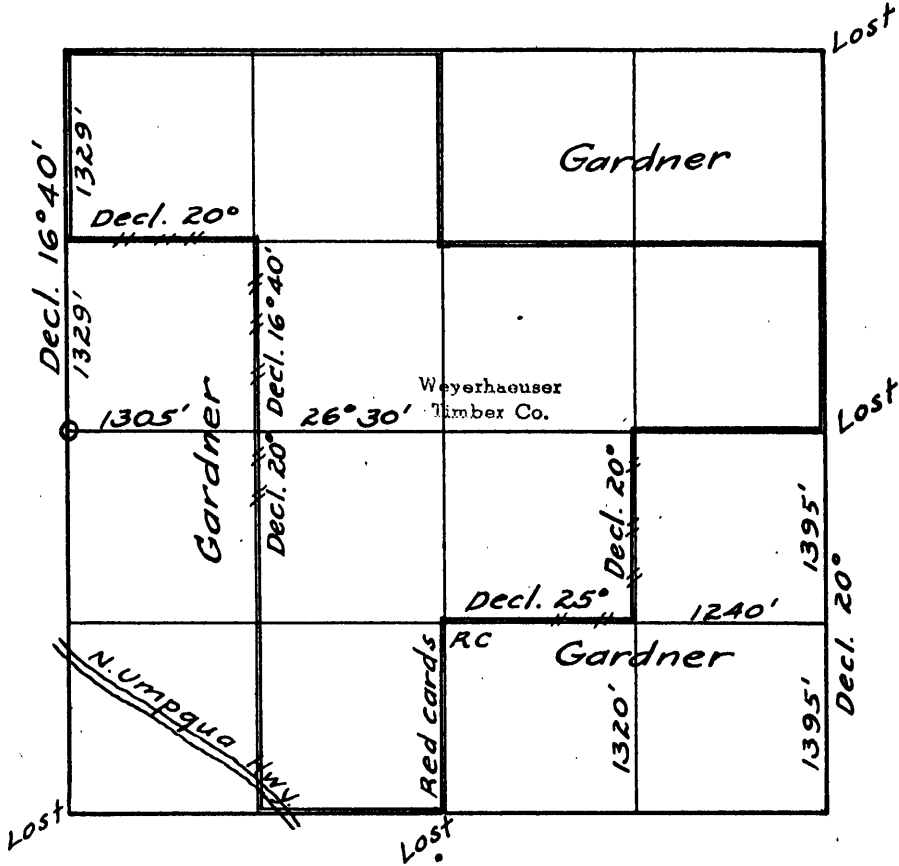
½ Corner common to Sections 5 and 8

Set 2" square fir stake by single proportionate method.

Plat attached dated January, 1952 signed by Lester Calder shows previous blazing by agreement between John Gardner and Weyerhaeuser Timber Company.

WEYERHAEUSER TIMBER COMPANY

Section 08 Township 26 S Range 2 W



Dec. 1947 blazed lines in $W\frac{1}{2}$ as shown reported Dec. 17, 1947

April 1950 " " " $E\frac{1}{2}$ " "

Lines as shown were blazed in accordance with agreement between John Gardner and myself.

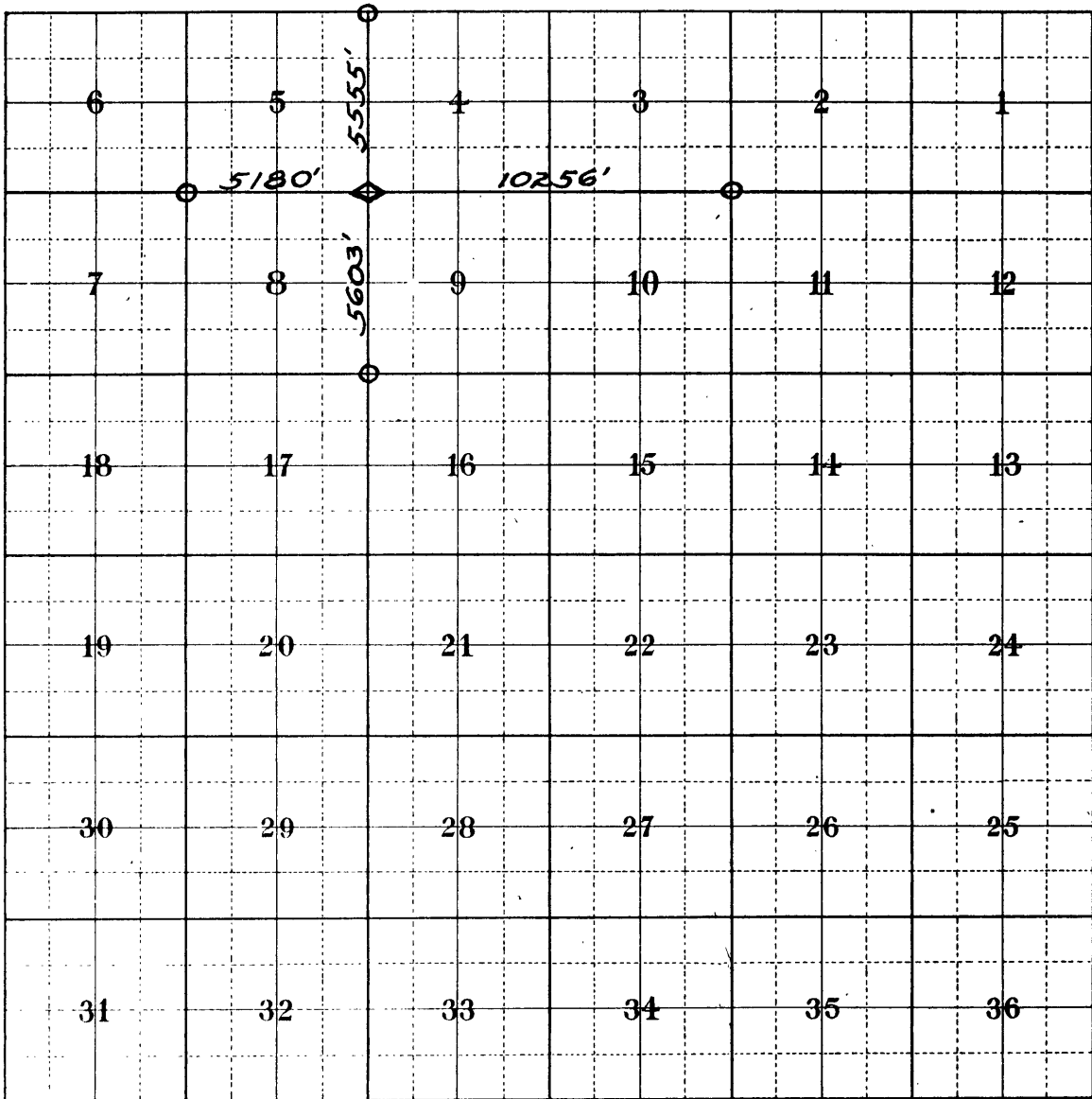
Examined January 1952

By Lester Calder

WEYERHAEUSER TEMPLER COMPANY

Township 26 S Range 2 W W.M.

Douglas County, Oregon



Double proportioning as shown on January 9, 1952 survey.

19
L. D. Calder

C. S. File No. 40/399

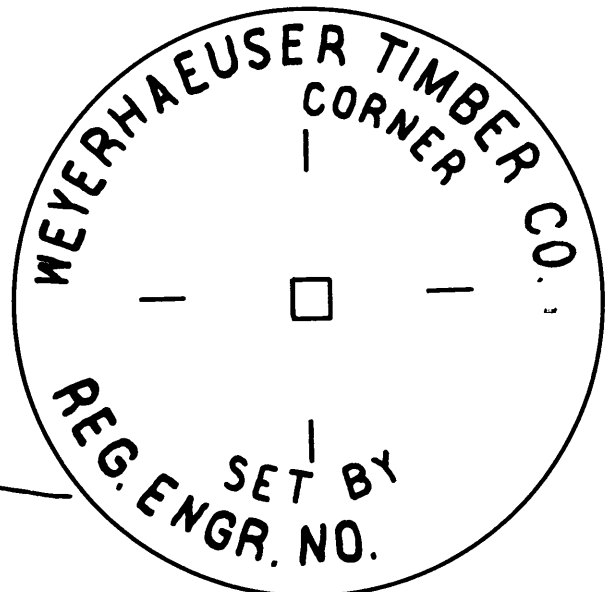
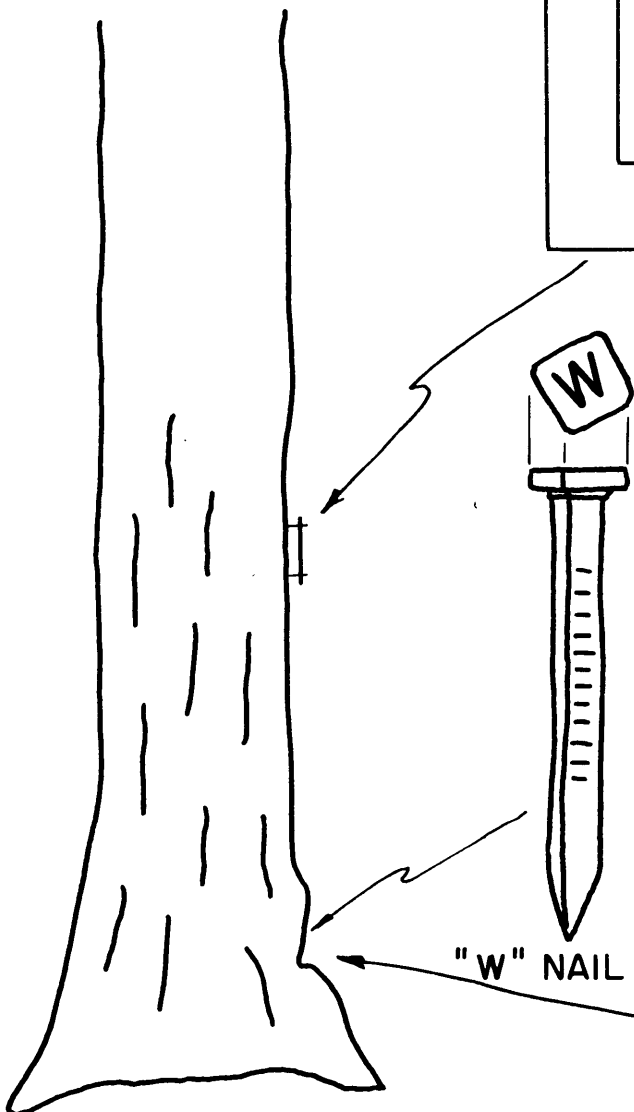
WEYERHAEUSER TIMBER COMPANY

CORNER REFERENCE

W. T. CO.			
SEC.	TWP.	R.	COR.
FT.	TO		COR.

ALUMINUM PLATE

Scale : Actual Size



BRASS DISC