

**RE-ESTABLISHMENT
OF CORNER COMMON TO
SECTIONS 4, 5, 8, & 9, T. 26 S., R. 2 W.**

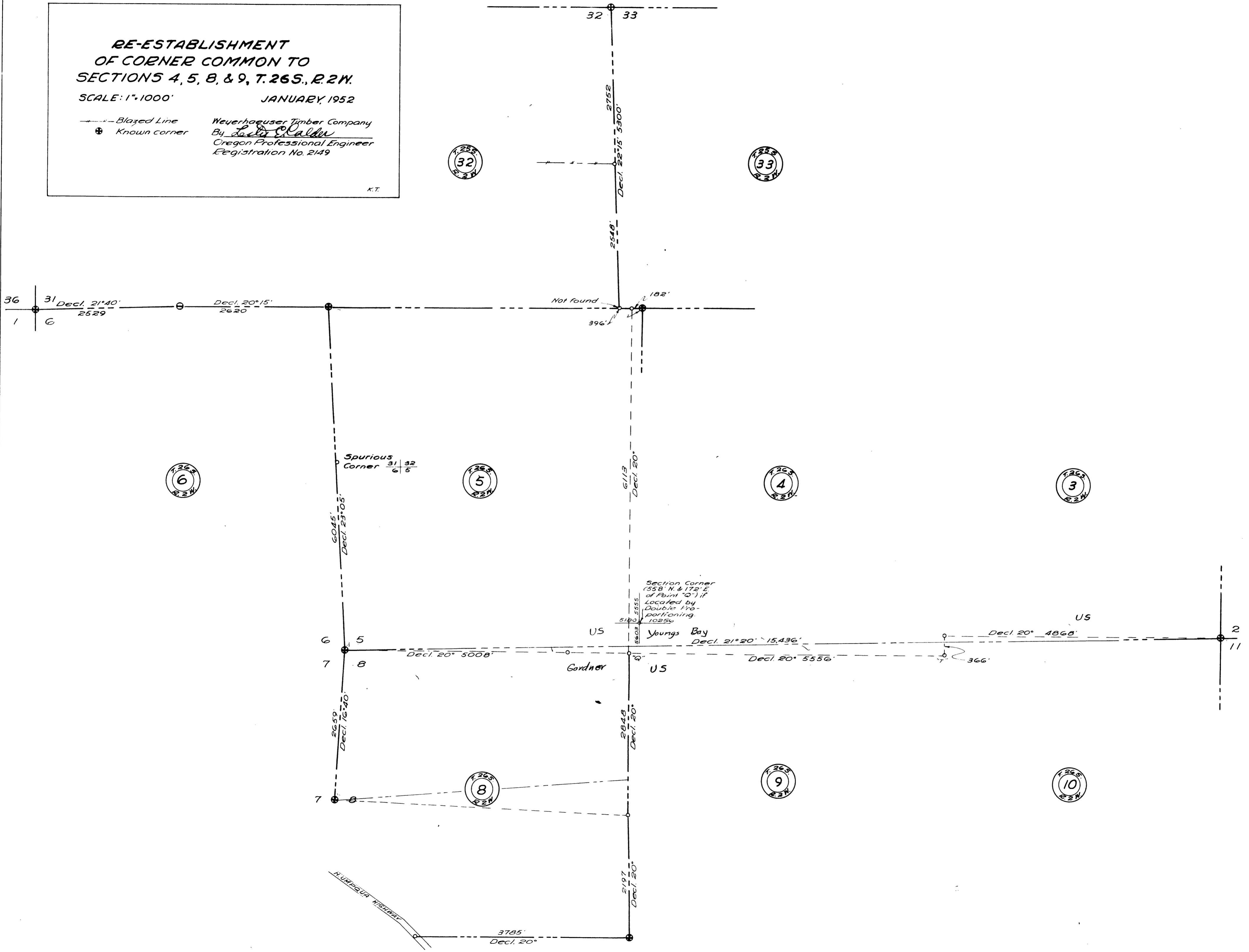
SCALE: 1"=1000'

JANUARY, 1952

--- Blazed Line
+ Known corner

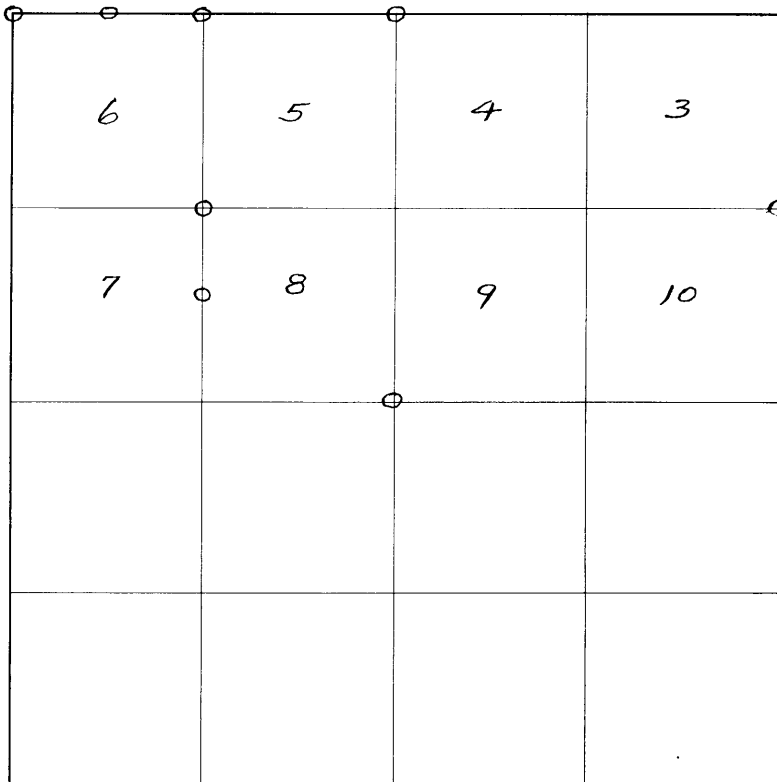
Weyerhaeuser Timber Company
By Lester Calder
Oregon Professional Engineer
Registration No. 2149

K.T.



WEYERHAEUSER TIMBER COMPANY

Section _____ Township 26 S Range 2 W



// // Line marked by notch cut in blaze



Known corner



Referenced corner

Staff compass and abney slope chaining survey.

Work was done under the direct supervision of Lester Calder, assisted by John Gardner, Rex Gardner, Howard Carrels, Kenneth Bergeson, Douglas Calder, Curtis Price. Started in fall of 1947 and continued intermittently to present.



FILED
RECEIVED

JAN 9 1952

COUNTY SURVEYOR
DOUGLAS COUNTY, ORE.

This survey record consists of 1 map and 6 sheets.

Dates of survey 1947-1952 Date filed for record & where January 9, 1952

Distribution

Douglas County Surveyor's Office

WCo. Tacoma
Young Bay Lbr. Co.
O&C Roseburg
O&C Portland
John Gardner

Reported JAN 9 1952 19

By Lester Calder

John Gardner, 1615 Brown Avenue Roseburg, Oregon is the owner of land in Section 8, Township 26 South, Range 2 West, and the Weyerhaeuser Timber Company, as owner of land in Section 8, worked with Gardner in establishing the property lines dividing our ownership.

In blocking out the $N\frac{1}{2}$ of $NE\frac{1}{4}$ (owned by Gardner) the location of the lost Northeast corner becomes a necessity. Thorough search and study was made with the conclusion reached that the survey was never carried into this area and consequently the corner should be classed as "lost."

This plat shows the reconnaissance work and is supplied for the purpose of study to determine future procedure.

o o

7 | 8

$\frac{1}{4}$ Corner common to Sections 7 and 8

G.L.O. brass cap and bearing trees.

$\frac{6}{7}$ | $\frac{5}{8}$

Corner common to Sections 5, 6, 7, and 8

North 2655 feet and East 153 feet from $\frac{1}{4}$ S 7 and 8 is a point from which a 30" Fir bears N 15° W 58 links and upon chopping out part of scar found that the face was charred. Appeared to be destroyed willfully by fire. A 24" Fir bears S 55° W 32 links and on the bark found axe marks and what had been a smooth surface on the bark. Probably was scribed on bark and either cut off or weathered away. An 18" Laurel stub S 50° E 47 links was in evidence but all possibility of identifying marks was gone. The fourth BT was not in evidence and could have been there on the ground in a decayed condition. In light of spurious corners to the North, am convinced that an effort had been made to lose this corner. With the species bearings and distances fitting so perfectly I consider this an existent corner established in 1883.

6 | 5

$\frac{1}{4}$ Corner common to Sections 5 and 6

Am convinced that this line was not run and that this corner was never set. Found no blazes from the North or South. At 5955 feet North on 20° Declination from the $\frac{1}{4}$ S 7 and 8 are 4 good-looking bearing trees scribed $\frac{31}{65}$ | $\frac{32}{5}$.

Found no blazes leading away in any direction. Scar blazes indicate that the chopping was done in 1894. This is undoubtedly a spurious corner and was ignored inasmuch as a G.L.O. retracement of the Township line was 2700 feet North of this point and the time of the original survey was prior to 1884.

$\frac{36}{1} \frac{31}{6}$

Corner common to Section 31-25S-2W
Section 36-25S-3W
Section 1-26S-3W
Section 6-26S-2W

Brass cap and BTs.

$\frac{31}{5}$

$\frac{1}{4}$ Corner common to Section 31-25S-2W
Section 6-26S-2W
(May be legal only for Section 6)

Cedar post and both BTs which were marked in 1914 retracement survey by G.L.O. were grown over.

$\frac{6}{1} \frac{5}{5}$

Corner common to Sections 5 and 6

Corner tree standing and the two BTs marked in 1914 retracement survey by G.L.O. are down. South 2736 feet and East 173 feet on 20° Declination is the spurious $\frac{31}{6} \frac{32}{5}$.

$\frac{5}{8}$

$\frac{1}{4}$ Corner common to Sections 5 and 8

Considering topography and notes am convinced that the line between Sections 5 and 8 was not surveyed. Diligent search was made for $\frac{1}{4}$ S and we concluded it had never been set.

Chaining East from $\frac{6}{7} \frac{5}{8}$ 5008 feet marked Point "Q" which is North 5045 feet on 20° Declination from $\frac{8}{17} \frac{9}{16}$.

$\frac{5}{8} \frac{4}{9}$

Corner common to Sections 4, 5, 8, and 9

Diligent search was made but no corner could be found. Considering topography and notes and absence of blazes a study convinced us that these lines were never run and this corner never set.

$\frac{4}{9}$

$\frac{1}{4}$ Corner common to Sections 4 and 9

Diligent search was made but no corner could be found.

$\frac{4}{9} \frac{3}{10}$

Corner common to Sections 3, 4, 9, and 10.

At a point 10,564 feet East of the Northwest corner of Section 8 marked Point "T". A diligent search was made but no corner could be found. Suggest running in from

North and South before reaching any definite conclusion.
Because of the burn it probably is lost.

3
10

¼ Corner common to Sections 3 and 10

Diligent search was made but no corner could be found.

3|2
10|11

Corner common to Sections 2, 3, 10 and 11

Found mound of rock and 5 BTs with the 40" Fir N 35° E
51.5 feet an original. Point "T" is 4868 feet West and
366 feet South of this corner.

8|9
17|16

Corner common to Sections 8, 9, 16, and 17

Brass cap and BTs.

Ran North and found no blazes on old growth trees.

8|9

¼ Corner common to Sections 8 and 9

Diligent search was made but no corner could be found.
Concluded that this line was never surveyed and this corner
never set.

"Q"

Point "Q" is 5045 feet North of $\frac{8|9}{17|16}$.

North on 20° Declination from "Q" 6113 feet and hit 182
feet West of $\frac{5|4}{17|16}$. Found no blazes going North or running
South from corner.

5|4

¼ Corner common to Sections 4 and 5

Diligent search was made but no corner could be found.
Concluded that this line was never surveyed and this corner
never set.

5|4

Corner common to Sections 4 and 5

Original BTs identified and
Referenced by Lester Calder ("W" nails and plates only)

6"	Yew	S 6° W	33.7'	(Orig.)
36"	Fir	N 55° W	3.3'	(Orig.)

8
17

$\frac{1}{4}$ Corner Common to Sections 8 and 17

Diligent search was made but no corner could be found. Many cruisers and engineers have looked for it with no success. It is considered a lost corner.

8|9
17|16

Corner common to Sections 8, 9, 16, and 17

This is considered by engineers and cruisers as a lost corner.

o o c o o o o o o o o o o o o o o

Weyerhaeuser Timber Company Corner Reference Method
as referred to above consists of a 4.7" x 5.7" aluminum plate with embossed Section plat nailed head high on the tree. Near base of tree a notch is cut and a square-headed nail with "W" on head driven through a hole in a 2 $\frac{1}{2}$ " brass disc stamped with the Oregon Registered Land Surveyor or Professional Engineer registration number.

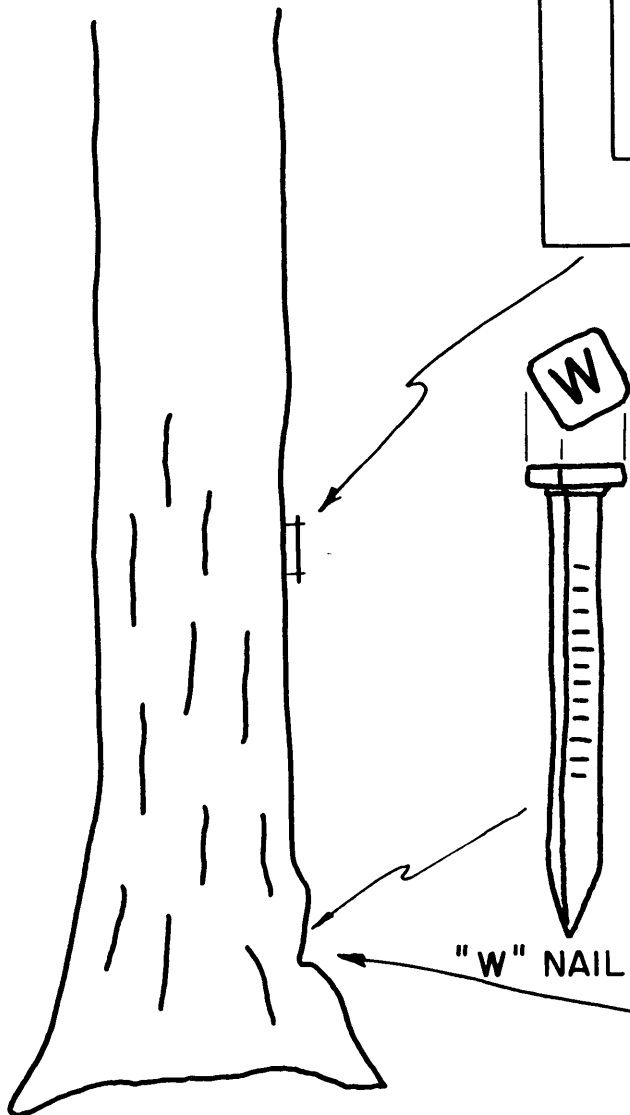
WEYERHAEUSER TIMBER COMPANY

CORNER REFERENCE

W. T. CO.			
SEC.	TWP.	R.	COR.
FT.	TO		COR.

ALUMINUM PLATE.

Scale : Actual Size



"W" NAIL

