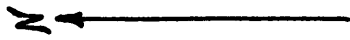
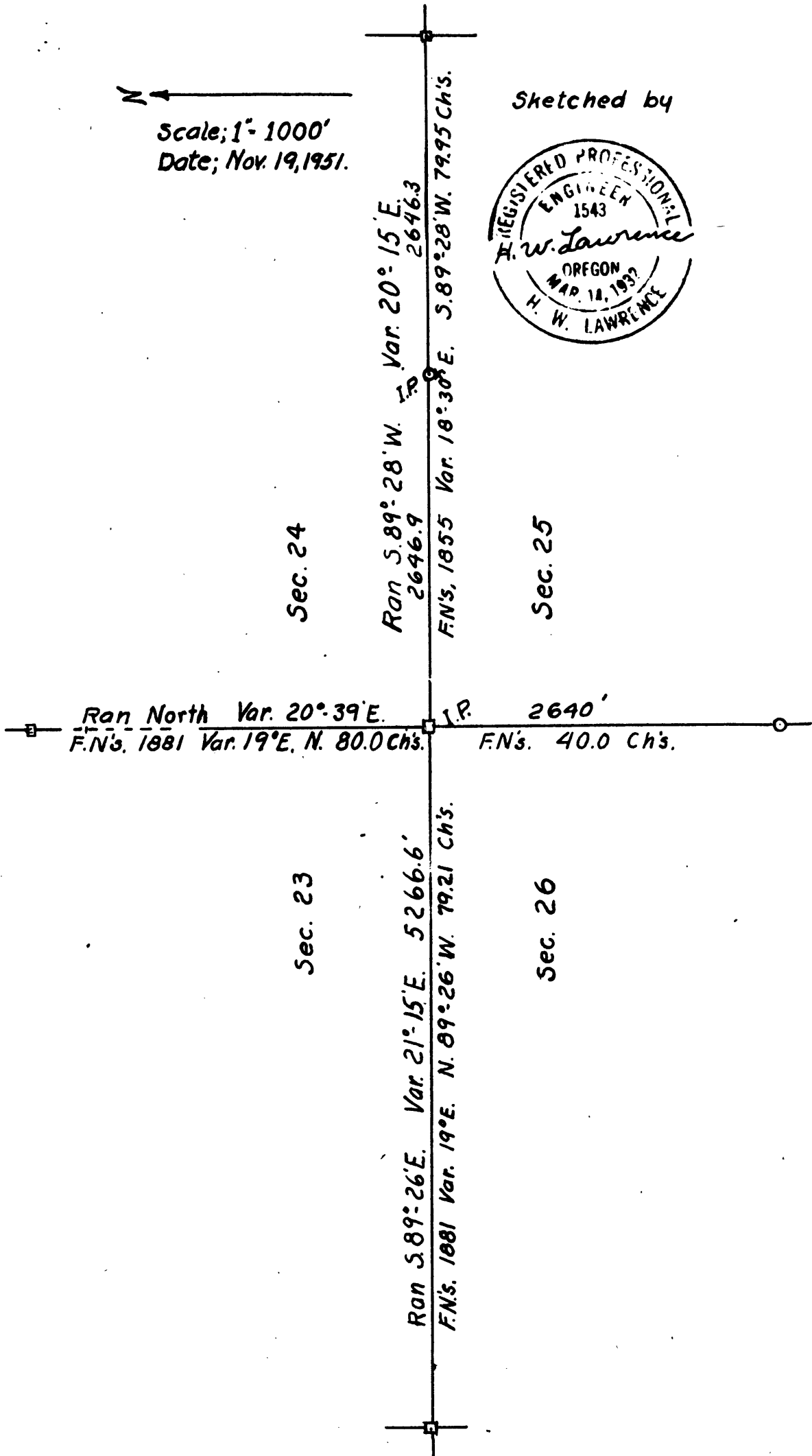


SEC. COR. 23, 24, 25, 26; and 1/4 S.C. 24, 25.
T. 32 S.; R. 6 W.



Scale; 1" = 1000'
Date; Nov. 19, 1951.

Sketched by



Sec. 24

Sec. 25

Sec. 23

Sec. 26

Wolf Creek, Oregon.
Nov. 19, 1951

Mr. Ben Irvin,
County Surveyor
Douglas County
Oregon.

Dear Sir;

In order to make a proper survey for timber in section 24, T.32 S., R.6 W., it was necessary to use the two section corners and the quarter corner in between on the south boundry of this section.

Starting from the SE. section corner, a reset corner with pipe etc., as recorded in your office, I ran westerly 2646.3 feet to a mound of stone. There being no bearing trees to fit the description of the field notes and the records at your office not showing a reset corner I continued the line westerly on the same course from the mound of stone but at the proper distance was unable to find the section corner.

About a year ago I worked in the section to the west and ran a quarter mile toward this unfound corner, so I continued the line easterly and made a fair connection with the line from the east of par.2 but of course found no indications of the section corner.

From the field notes copied at your office I than ran northerly from the quarter corner between sections 25 and 26 for 2640 feet, then 198 feet to the ridge from which I was able to shoot the northwest corner of section 24. Corrected the alignment of the three lines resulting as shown on the sketch enclosed and reset corners as follows:-

Section corner 23, 24, 25, 26.

Drove a $\frac{3}{4}$ " iron pipe 30" long, 24" into the ground, from which,

- A Y.pine 32" dia. bears N.56°E., 14.2', mkd. S 24 BT
- A Y.pine 12" dia. bears S.48°E., 3.6', mkd. S 25 BT
- A B.oak 13" dia. bears S.46°W., 15.0', mkd. S 26 BT
- A B.oak 17" dia. bears N.49°W., 28.0', mkd. S 23 BT

$\frac{1}{4}$ Section corner bet. 24-25

Drove a $\frac{1}{4}$ " iron pipe 30" long, 24" into the ground, from which,

- A B.oak 26" dia. bears N.50°E., 108.9', mkd. $\frac{1}{4}$ S24 BT
- A B.oak 32" dia. bears S.71°W., 230.8', mkd. $\frac{1}{4}$ S25 BT

A mound of stone bears south at 11' from this set $\frac{1}{4}$ corner.

No attempt was made to correlate the magnetic declinations of these lines by sola or polaris observations.

FILED
RECEIVED

DEC 21 1951

COUNTY SURVEYOR
DOUGLAS COUNTY, ORE.



C. S. File No. 40/397