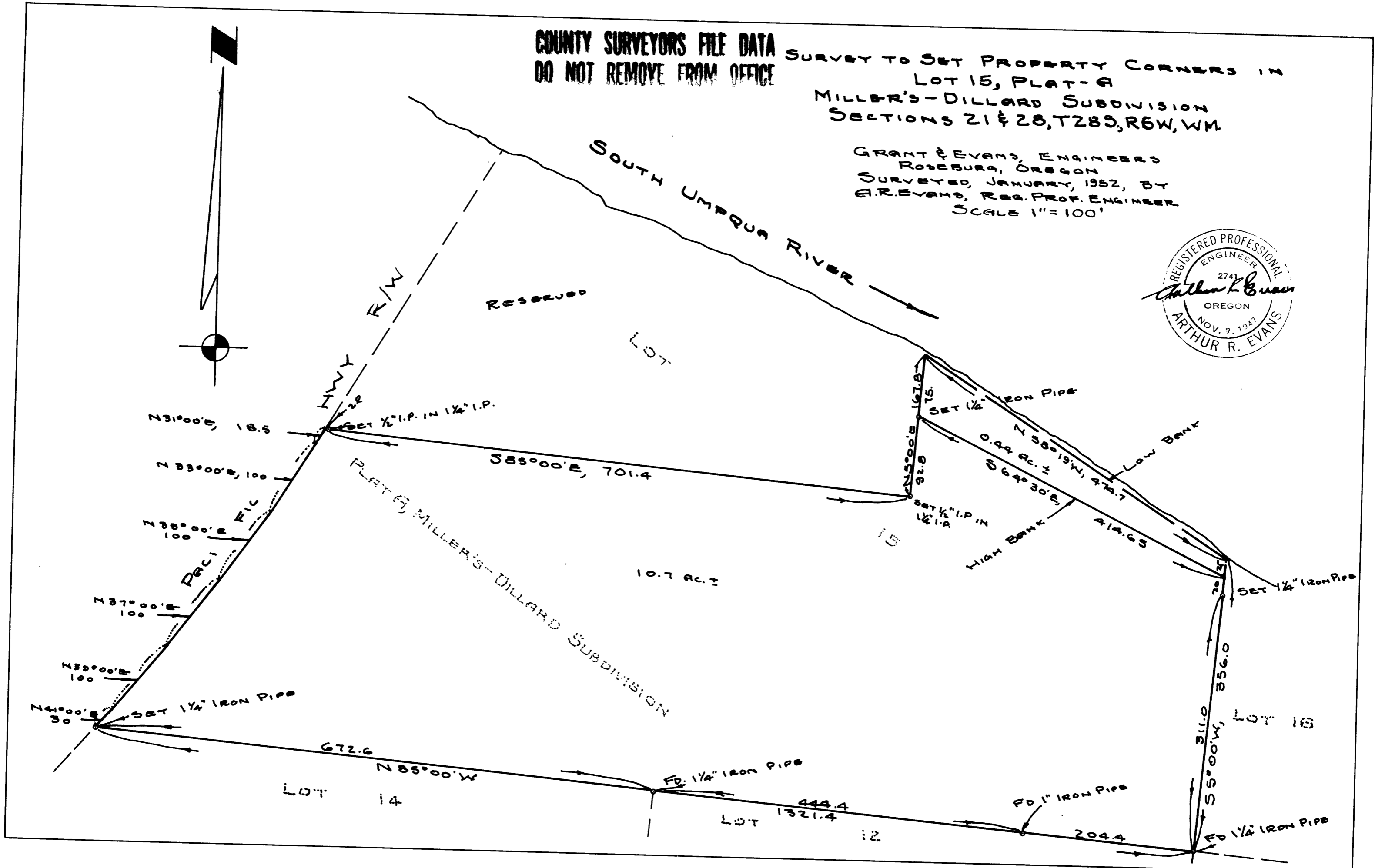


COUNTY SURVEYORS FILE DATA
DO NOT REMOVE FROM OFFICE

SURVEY TO SET PROPERTY CORNERS IN
LOT 15, PLAT-A
MILLER'S-DILLARD SUBDIVISION
SECTIONS 21 & 28, T28S, R6W, WM.

GRANT & EVANS, ENGINEERS
ROSEBURG, OREGON
SURVEYED, JANUARY, 1952, BY
A.R. EVANS, REG. PROF. ENGINEER
SCALE 1"=100'



C.S. 40/393 WORK DONE FOR MAYER P