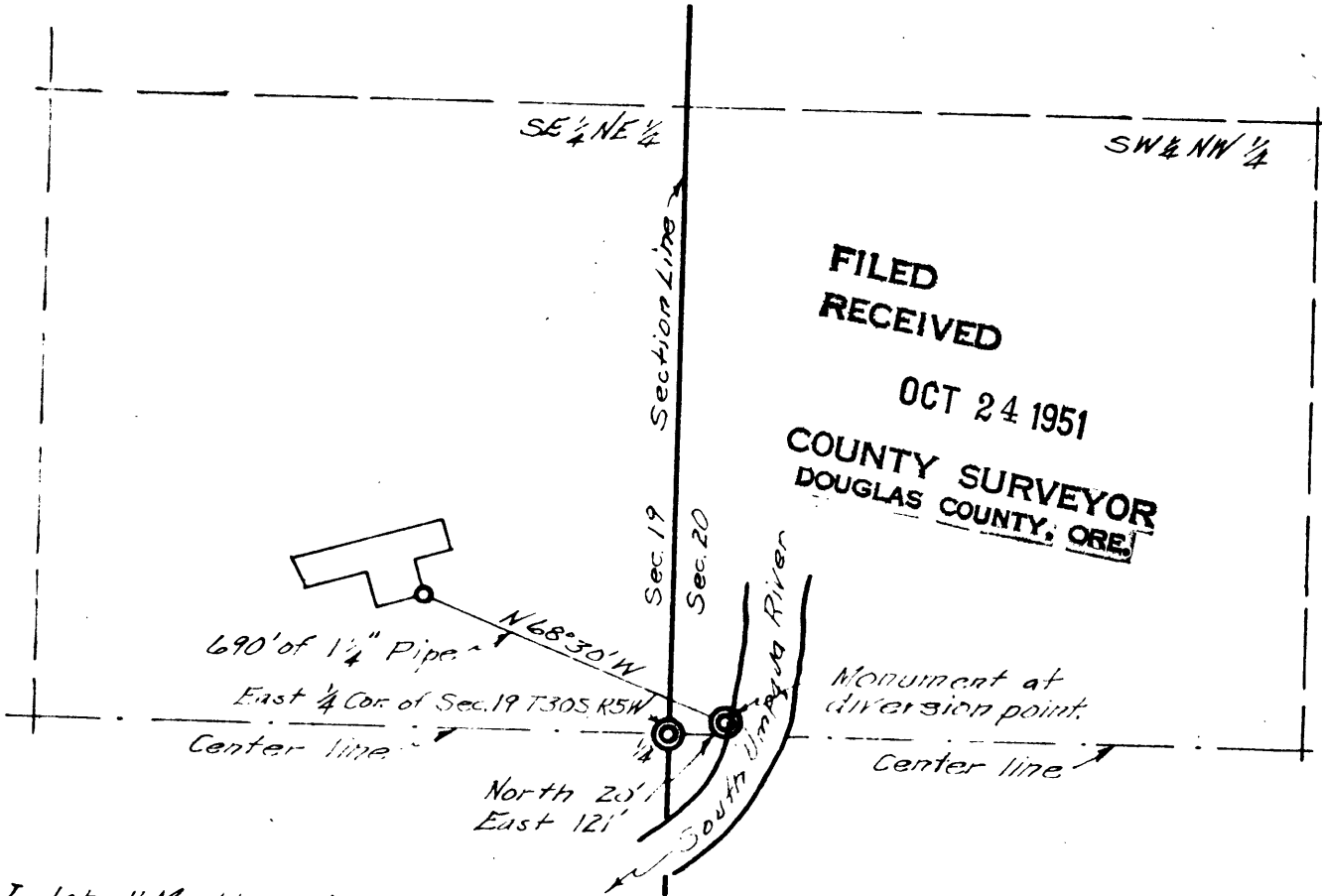


MAP  
of  
PROPOSED WATER RIGHT  
for  
JAMES M. MCGINTY  
Scale 1" = 400' Oct. 1951



I, John H. Markham, Jr. of Riddle, Oregon do hereby certify that this map was made from notes taken during an actual survey made by me on Oct. 9, 1951, that the monument shown on this map consisting of a 1x30" iron pipe driven 20" in ground from which a pipe 7" in diam. bears N33°E, 3.5' dist. marked W.R. 2880, B.T. A 7" diam. pipe bears S4°W, 90' distance, marked W.R. XXX B.T. The monument is North 20.0' and East 121.0' from the East 1/4 section corner of Section 19, T30S, R5W, W.1/4.

John H. Markham, Jr.