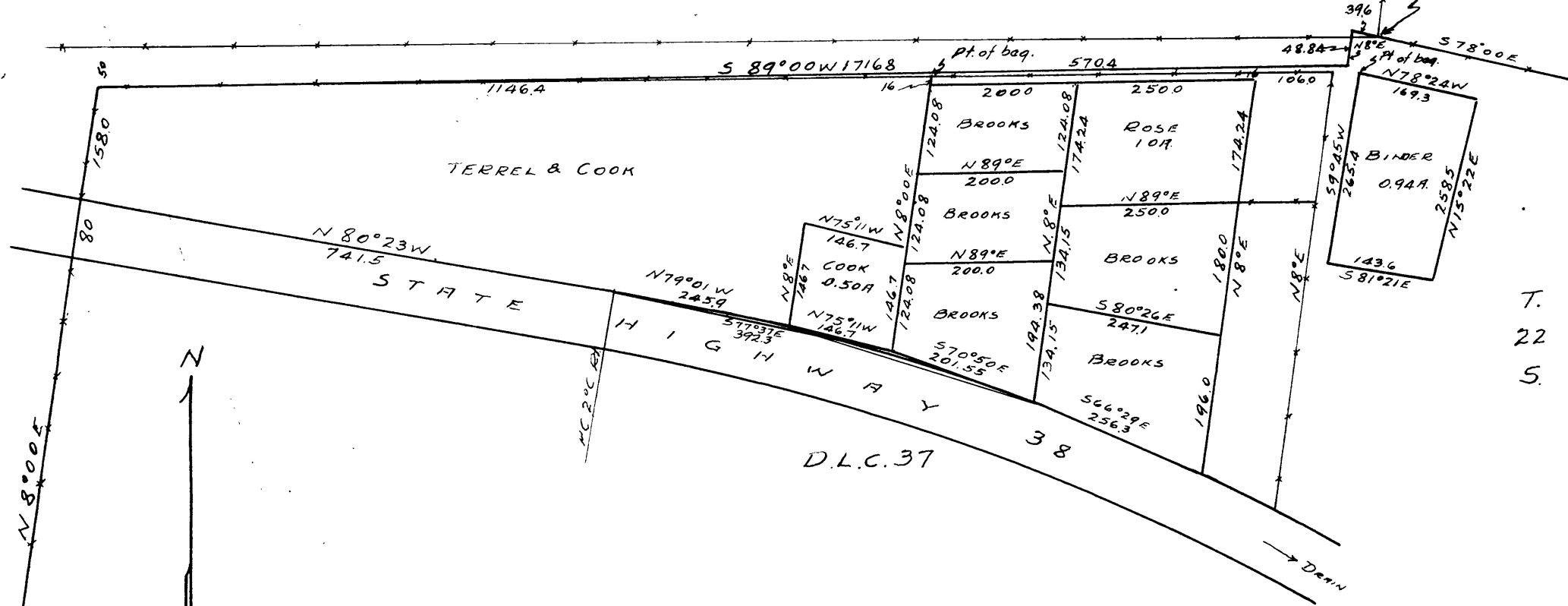


R.8 W  
D. L. C. 38

COR NOT FND.  
13 18  
24 19  
SE COR DLC. 38  
CROSS IN ROCK  
1 BT.

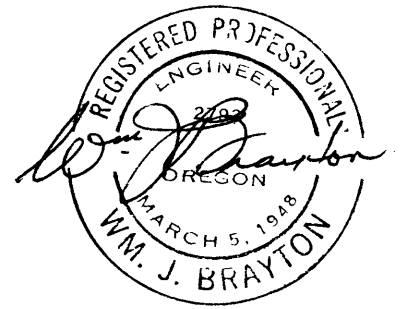


OWNERSHIPS  
N.W. 1/4 D.L.C. 37  
SEC 24 T. 22 S. R. 8 W. W.M.  
DOUGLAS COUNTY  
Scale 1" = 200' Oct. '51.

FILED  
RECEIVED

NOV 5 1951

COUNTY SURVEYOR  
DOUGLAS COUNTY, ORE.



COUNTY SURVEYORS FILE DATA  
DO NOT REMOVE FROM OFFICE

C.S. FILE 40/385-1