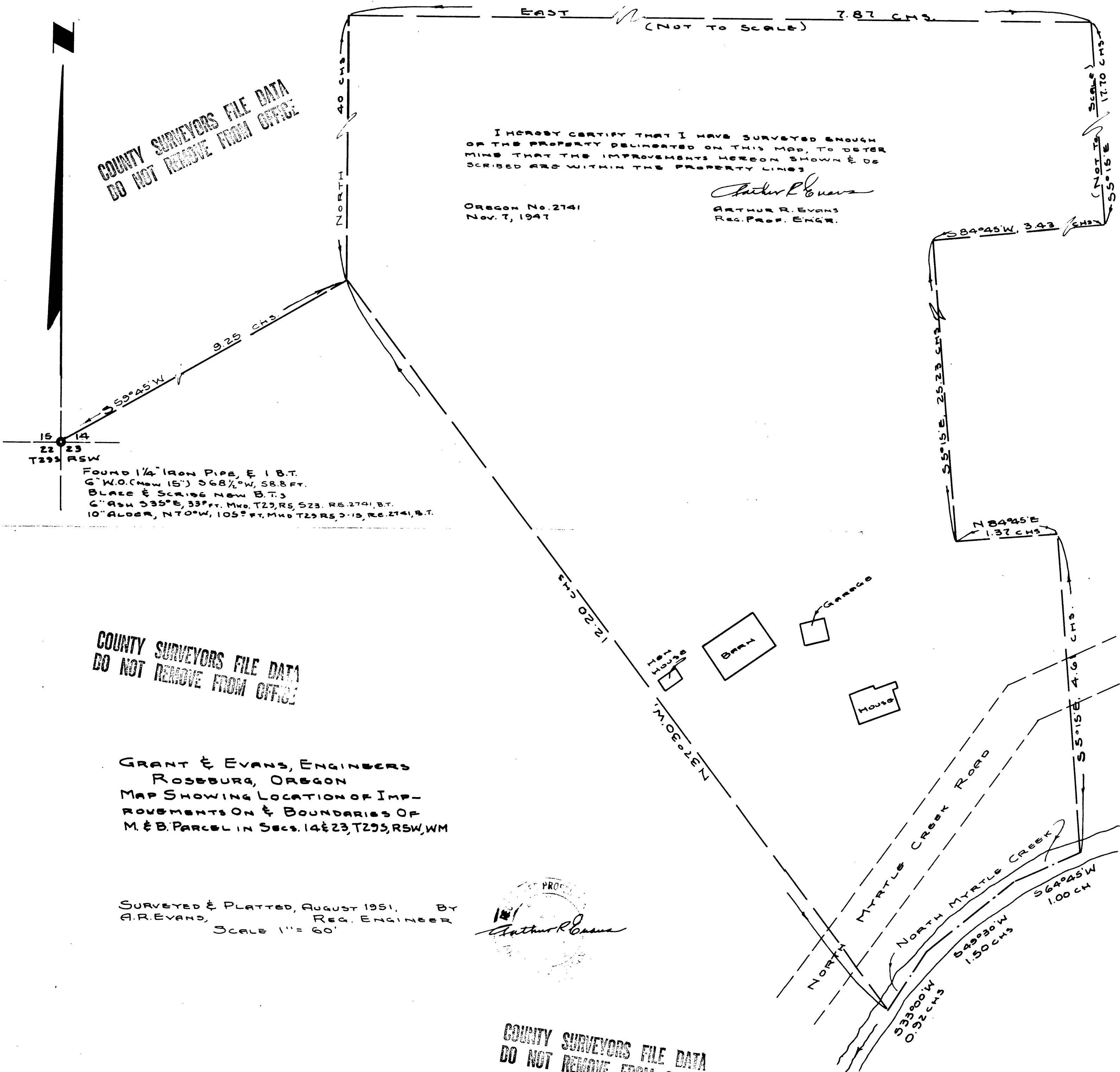


COUNTY SURVEYORS FILE DATA  
DO NOT REMOVE FROM OFFICE

I HEREBY CERTIFY THAT I HAVE SURVEYED ENOUGH  
OF THE PROPERTY DELINEATED ON THIS MAP, TO DETER-  
MINE THAT THE IMPROVEMENTS HEREON SHOWN & DE-  
SCRIBED ARE WITHIN THE PROPERTY LINES

OREGON No. 2741  
Nov. 7, 1947

*Arthur R. Evans*  
ARTHUR R. EVANS  
REG. PROF. ENGR.



15 14  
22 23  
T29S RSW

FOUND 1/4" IRON PIPE, E 1 B.T.  
6" W.O. (Now 15") S68 1/2° W, 58.8 FT.  
BLAZE & SCRIbble NOW B.T.  
6" ASH S35° E, 33 FT. MKD. T29, RS, S23, RE. 2741, B.T.  
10" ALDER, N70° W, 105 FT. MKD. T29, RS, S15, RE. 2741, B.T.

COUNTY SURVEYORS FILE DATA  
DO NOT REMOVE FROM OFFICE

GRANT & EVANS, ENGINEERS  
ROSEBURG, OREGON  
MAP SHOWING LOCATION OF IMP-  
ROVEMENTS ON & BOUNDARIES OF  
M. & B. PARCEL IN SECS. 14 & 23, T29S, RSW, WM

SURVEYED & PLATTED, AUGUST 1951, BY  
A. R. EVANS, REG. ENGINEER  
SCALE 1" = 60'

*Arthur R. Evans*

COUNTY SURVEYORS FILE DATA  
DO NOT REMOVE FROM OFFICE

C.S. 10/372