

588°39'40"W - 2171.10'

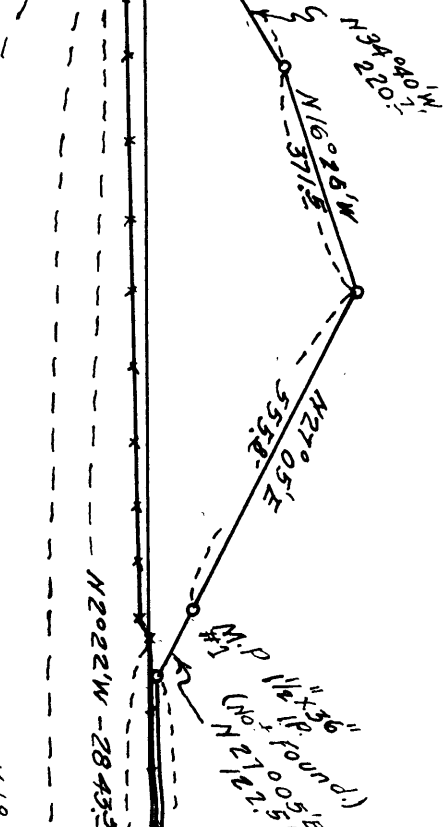
West

589°04'28"W - 2124.58'

Fence Cor.

Temp. Cor.
Set from
B.T.?

Temp. Cor.
Set from
Old B.T.?



PURDY
D. L. C. No 44.
Tp. 27S - Rg. 5W
WM.

MAP
OF
LANDS SURVEYED
FOR
LOUIS S. KOHLHAGEN
IN
Sections 9 & 16
Tp. 27S - Rg. 5W WM
Scale - 1" = 300'

NORTH

D.L.C. Line from Section 24

N104°47'30"W - 2631.75'

N20°22'W - 284.35'

N103°33'W - 1339.5'

N2°04'W - 1711.5'

N104°2'09"W - 5038.6'

Line between
Brinkerhoff & Gladwell

West

267.96' 4.06ch
436.92' 6.62ch
1/4 Cor. Not Found

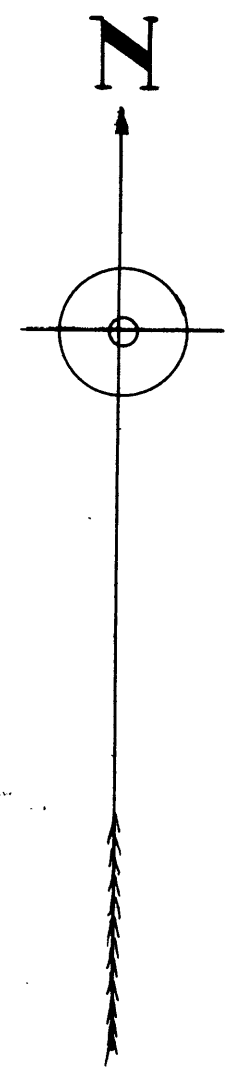
1320' 589°40'W

798' 832.92' 9 10 16 15

Steel Axle
with Gear Attached

N36°21'W - 503.8'

Gateway
Road as surveyed
(Platted from Field Notes)



N0°50'W - 2193.8'

N1°00'W - 2266.8'

(From Gov. Field Notes)

N8°48'W - 147.5'
N4°28'W - 294.8'
N2°07'W - 219.8'
N5°13'W - 84.2'

Stone Cor. Found

665.94'

FOR ORIGINAL
SEE CS 41/154-1 CS 40/356 21