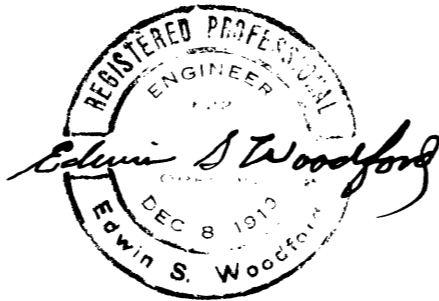
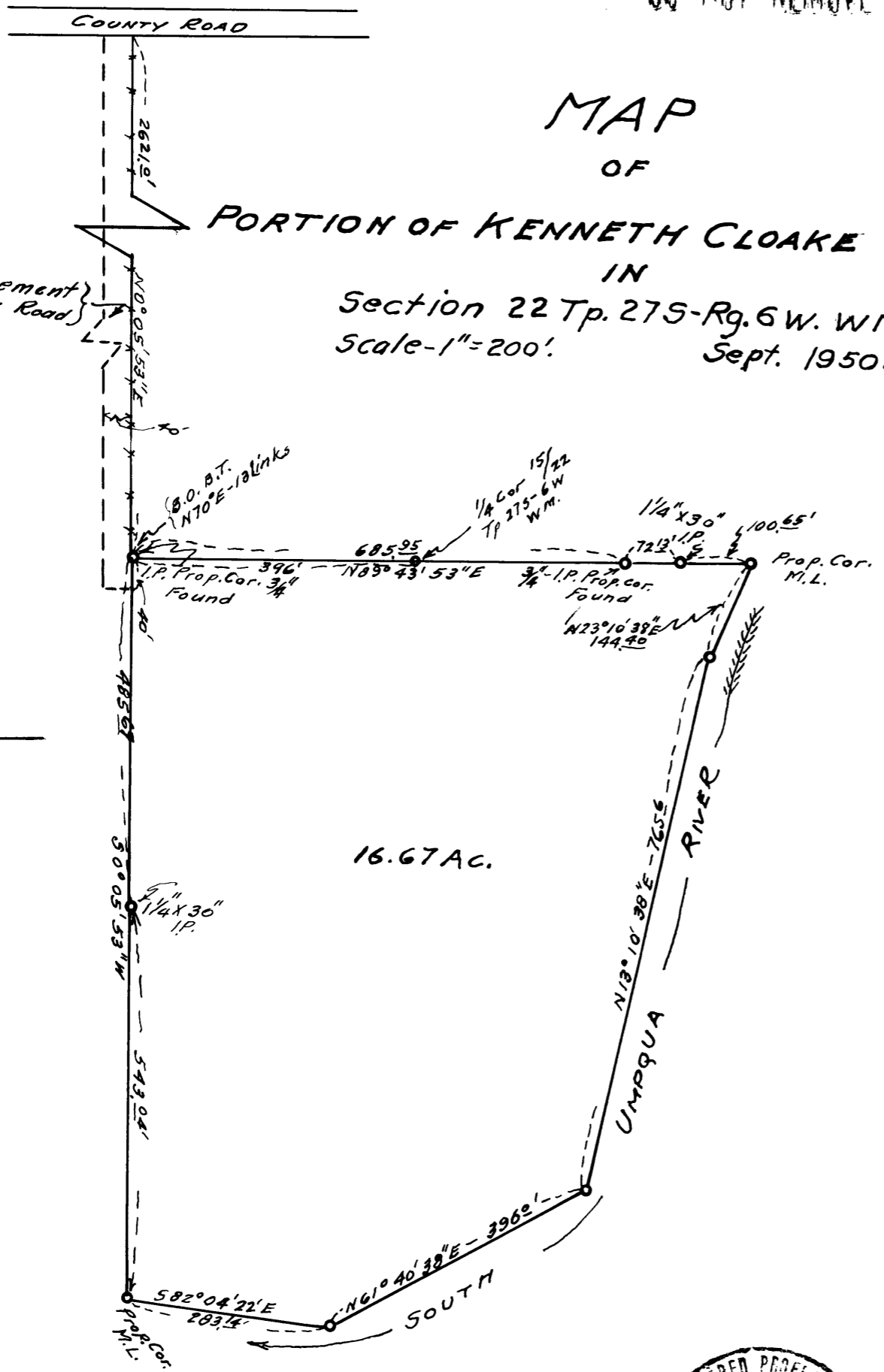
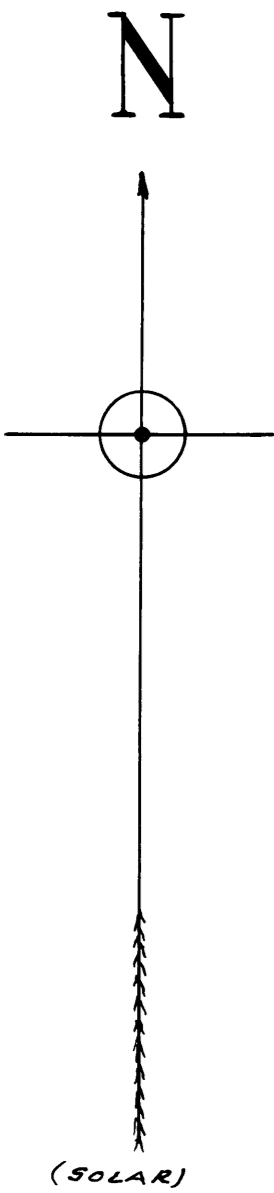


COUNTY SURVEYORS FILE DATA
DO NOT REMOVE FROM OFFICE

MAP OF

PORTION OF KENNETH CLOAKE RANCH

IN
Section 22 Tp. 27S-Rg. 6W. WM.
Scale-1"=200'.
Sept. 1950.



RECEIVED

COUNTY SURVEYOR
DOUGLAS COUNTY

CS FILE FOLDER

CONTAINS

MORE

INFORMATION