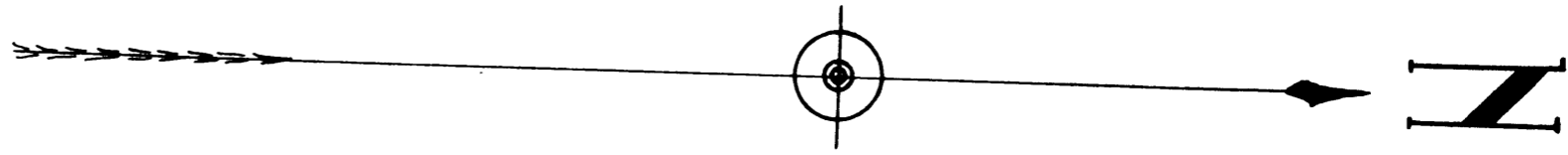
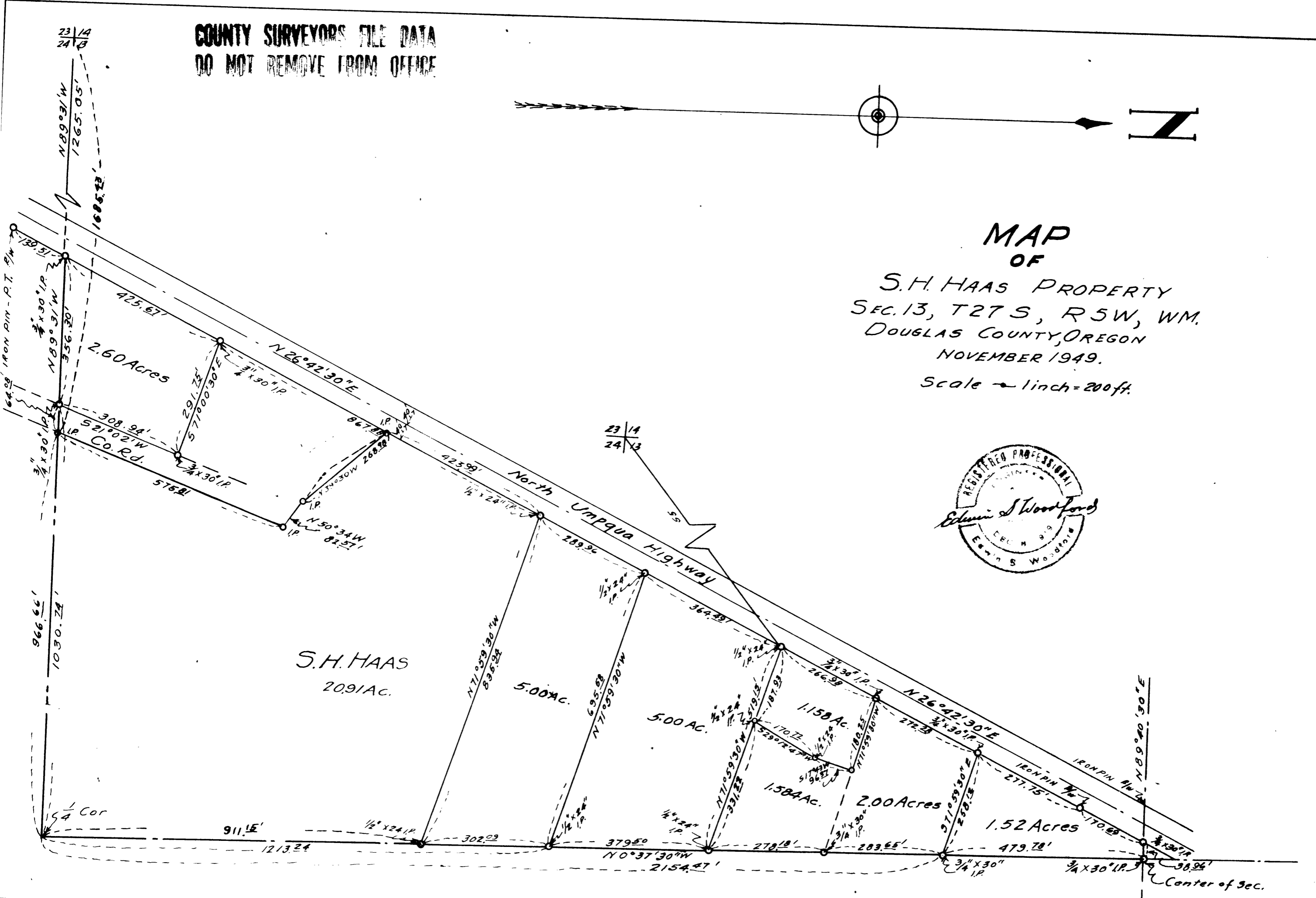


COUNTY SURVEYORS FILE DATA
DO NOT REMOVE FROM OFFICE



MAP
OF
S.H. HAAS PROPERTY
SEC. 13, T27 S, R5 W, WM.
DOUGLAS COUNTY, OREGON
NOVEMBER 1949.
Scale - 1 inch = 200 ft.



(372a)