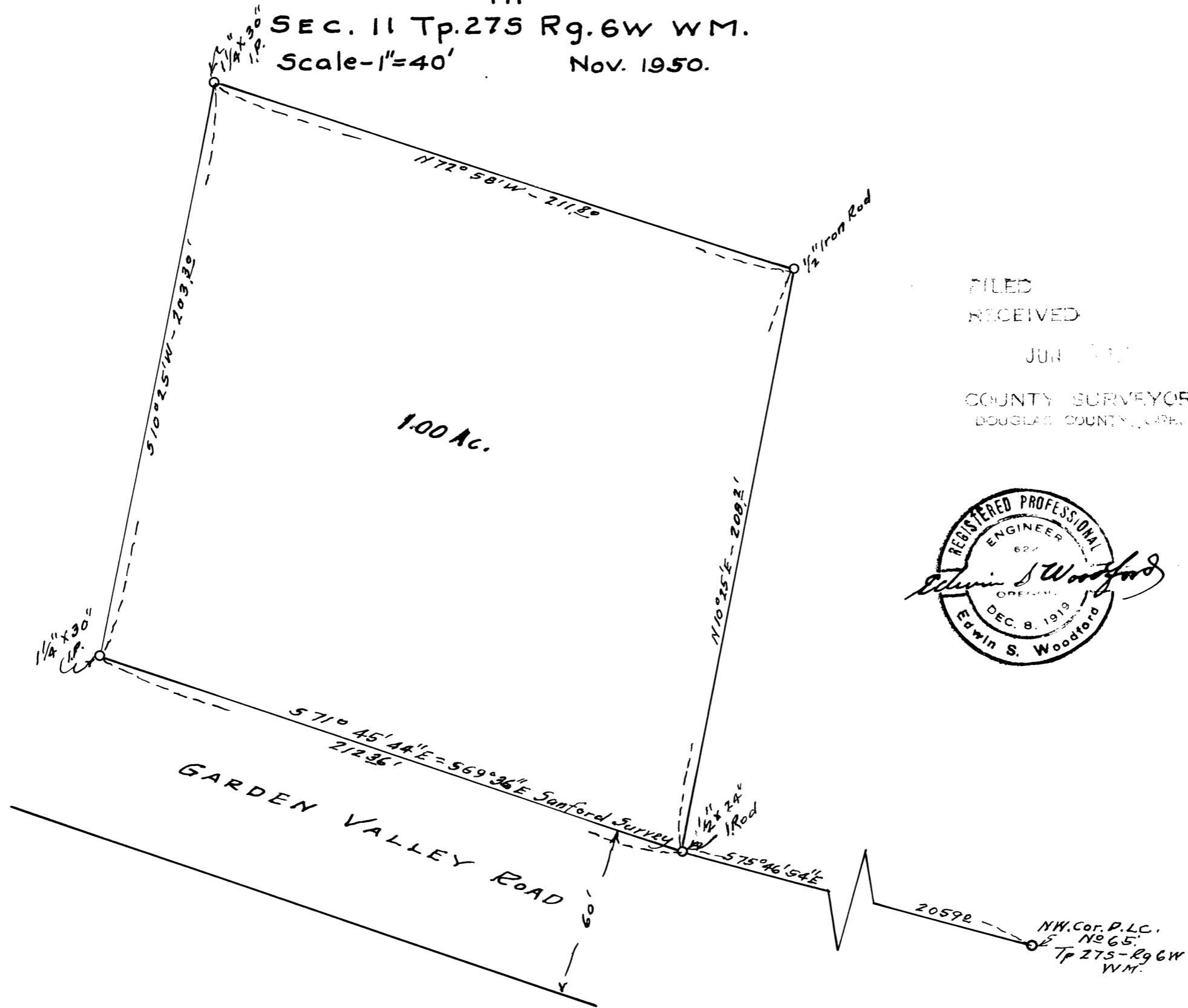
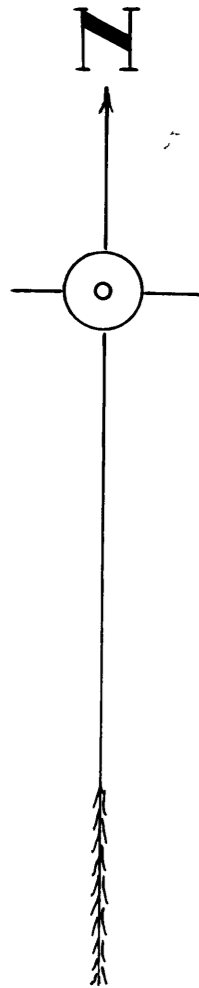


MAP
OF
PORTION OF GORDON WARE RANCH
IN
SEC. 11 Tp. 27S Rg. 6W WM.
Scale - 1" = 40' Nov. 1950.

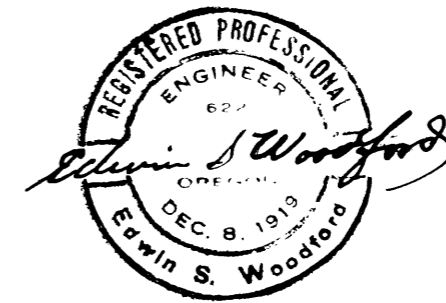
COUNTY SURVEYORS FILE DATA
DO NOT REMOVE FROM OFFICE



FILED
RECEIVED

JUN 1951

COUNTY SURVEYOR
DOUGLAS COUNTY, ORE.



CS FILE FOLDER

CONTAINS

MORE

INFORMATION