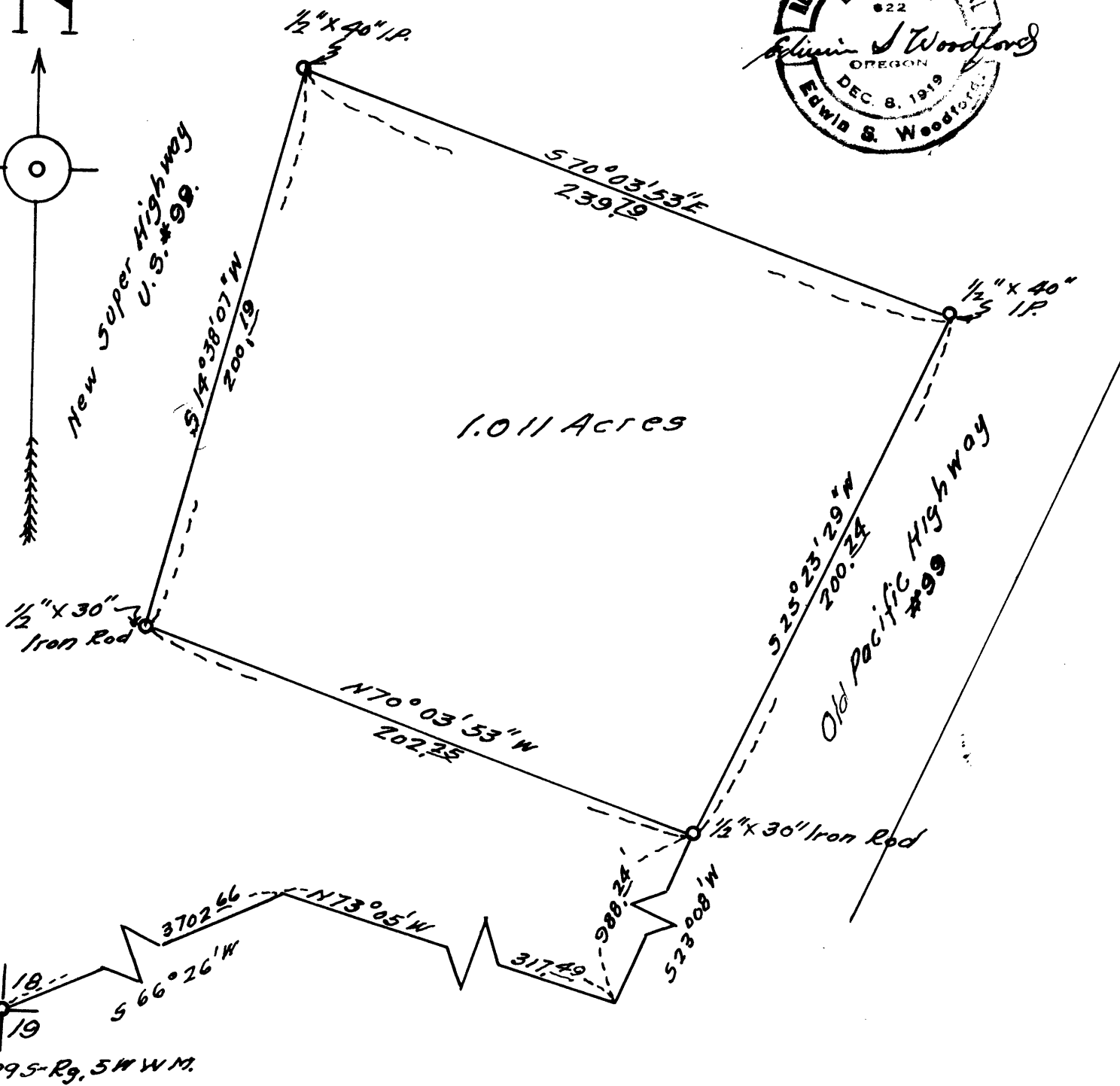
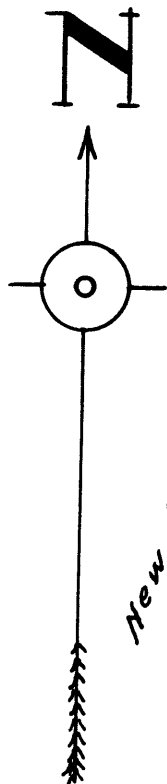


FILED
RECEIVED
JAN 18 1956
COUNTY SURVEYOR
BOZEMAN COUNTY

MAP
OF
PORTION OF CLAY ULAM RANCH
IN
SECTION 18 - Tp. 29S - Rg. 5W WM.
--Scale - 1" = 50'. Sept. 1955.

COUNTY SURVEYOR FILE DATA
DO NOT REMOVE FROM OFFICE



CS FILE FOLDER

CONTAINS

MORE

INFORMATION