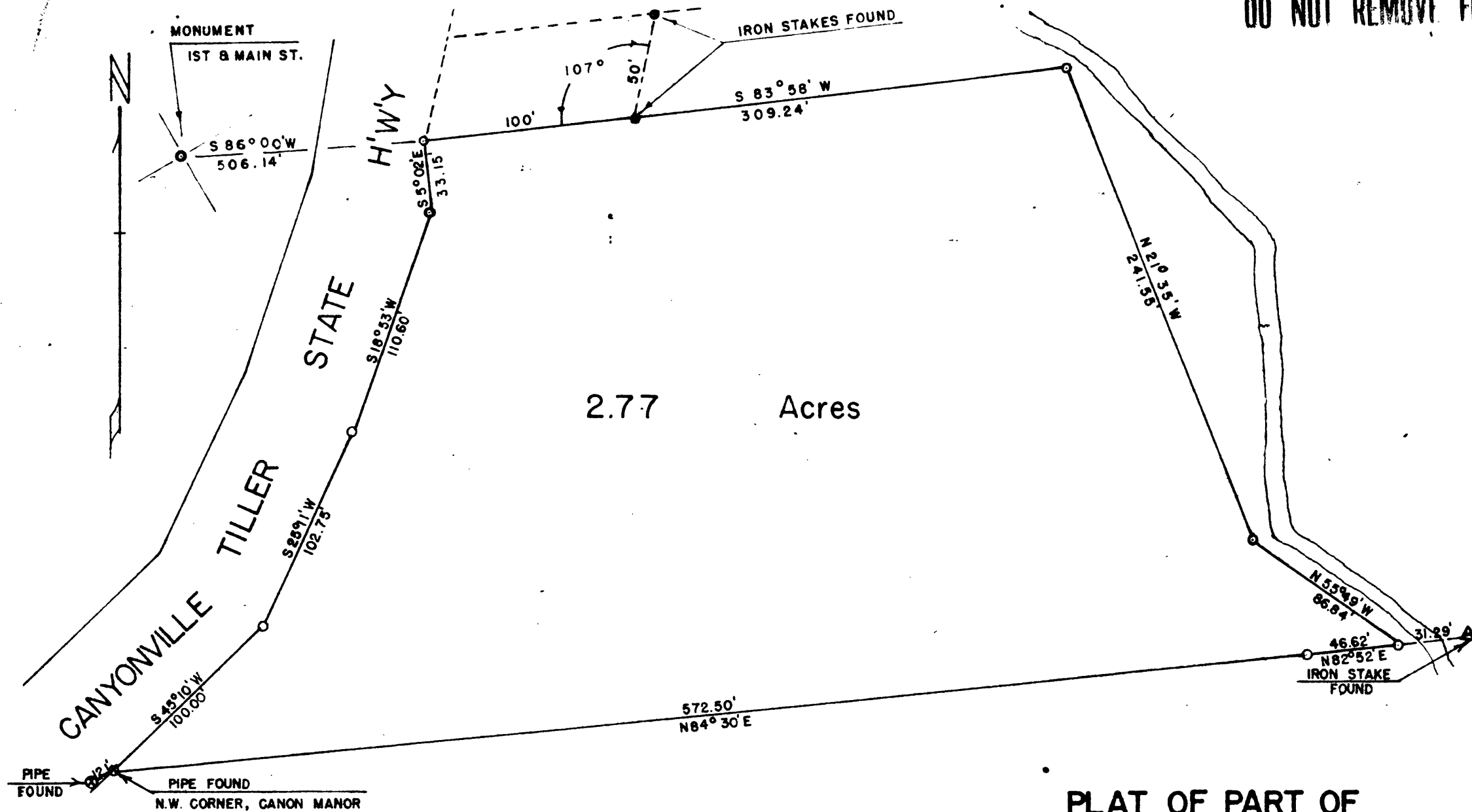


COUNTY SURVEYORS FILE DATA
DO NOT REMOVE FROM OFFICE



⊗ PIPE FOUND
○ 1" X 24" PIPE SET

PLAT OF PART OF HERBERT GROSS PROPERTY

IN SEC. 34-T30S-R5W-W.M.-DOUGLAS COUNTY-OREGON

AUGUST, 1948

SCALE: 1" = 60'

C. S. File No. 40/324