

COUNTY SURVEYORS FILE DATA  
DO NOT REMOVE FROM OFFICE

SEC. 31

NORTH 1/4 CORNER

SEC. 6

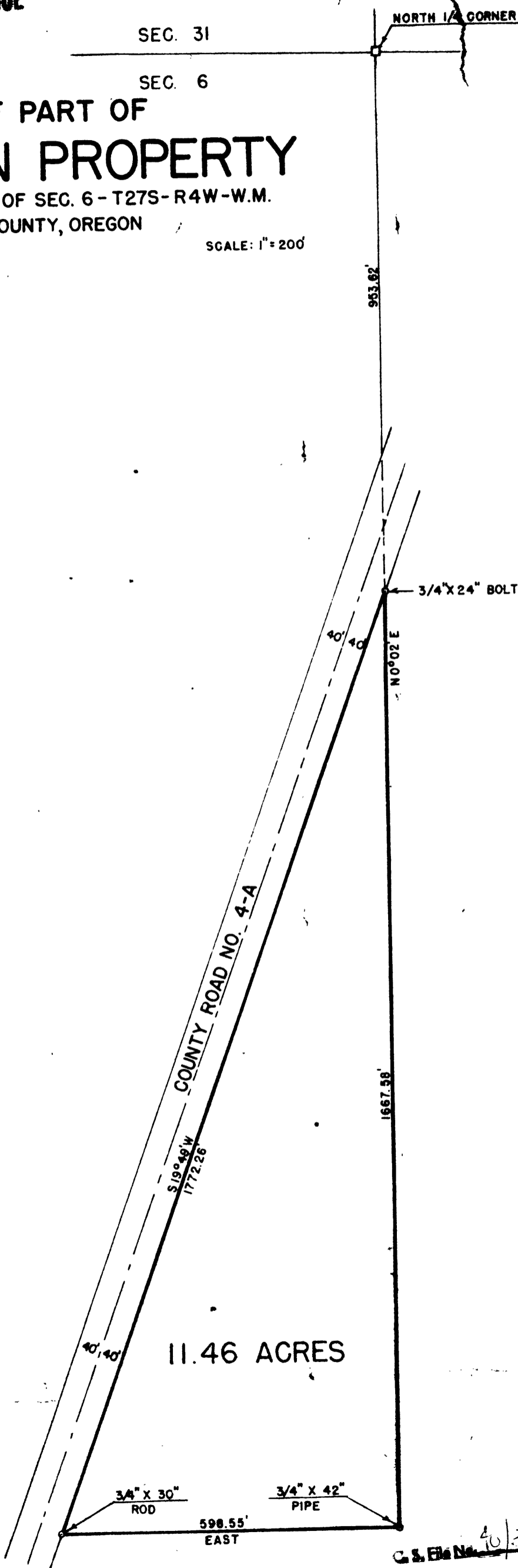
# PLAT OF PART OF WM. I. DIXON PROPERTY

IN THE N.E. 1/4 OF N.W. 1/4 OF SEC. 6 - T27S-R4W-W.M.

DOUGLAS COUNTY, OREGON

JANUARY, 1949

SCALE: 1" = 200'



11.46 ACRES

3/4" X 30"  
ROD

3/4" X 42"  
PIPE

598.55'  
EAST

C.S. File No. 40/323