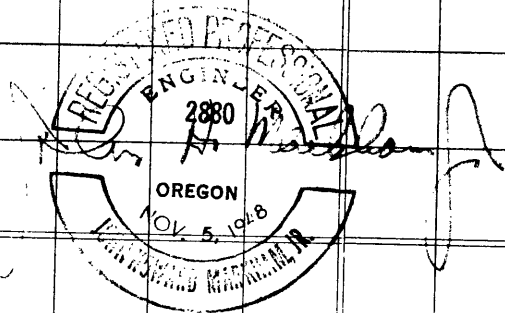


Town 30 S Range 7 W
 Section 34 County Oo.

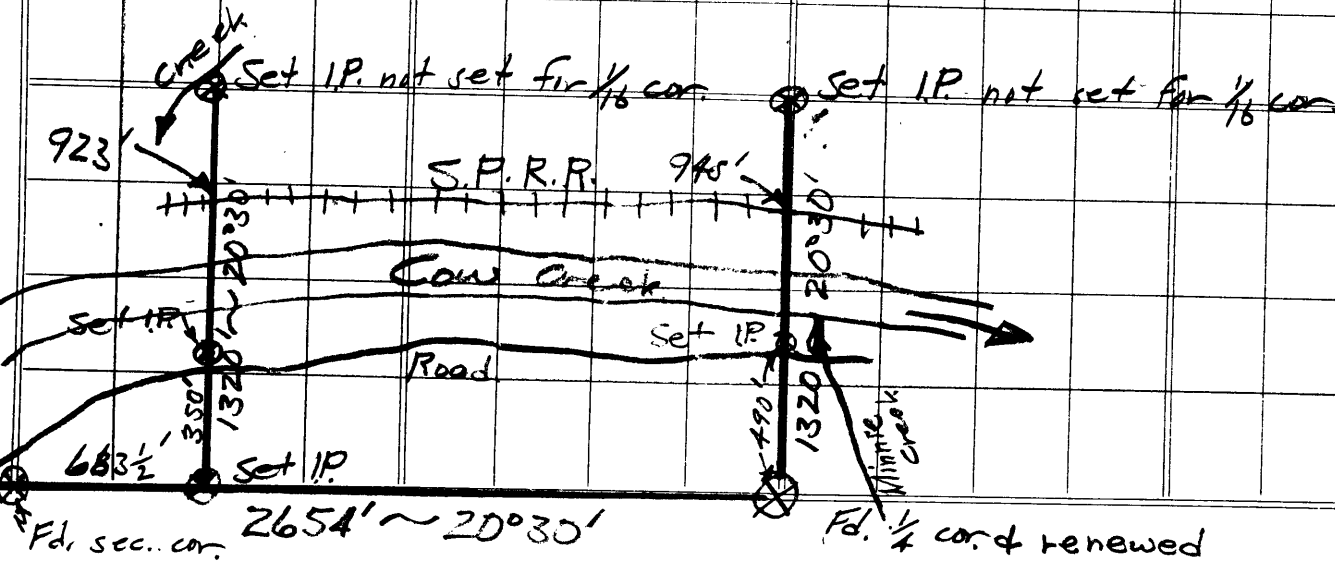
JOHN MARKHAM, Jr., Engineer



North-South & crosses S.P.R.R. at 534.26, 945'
 North or 1/4 cor.

34

Red Lines blazed
 Black line private road



u.s.g.s. brass cap.
 Work done 6-21-51, with staff compass & slope chained

Work done for Roy B. Walker
 EXAMINED

S. File No. 40/311