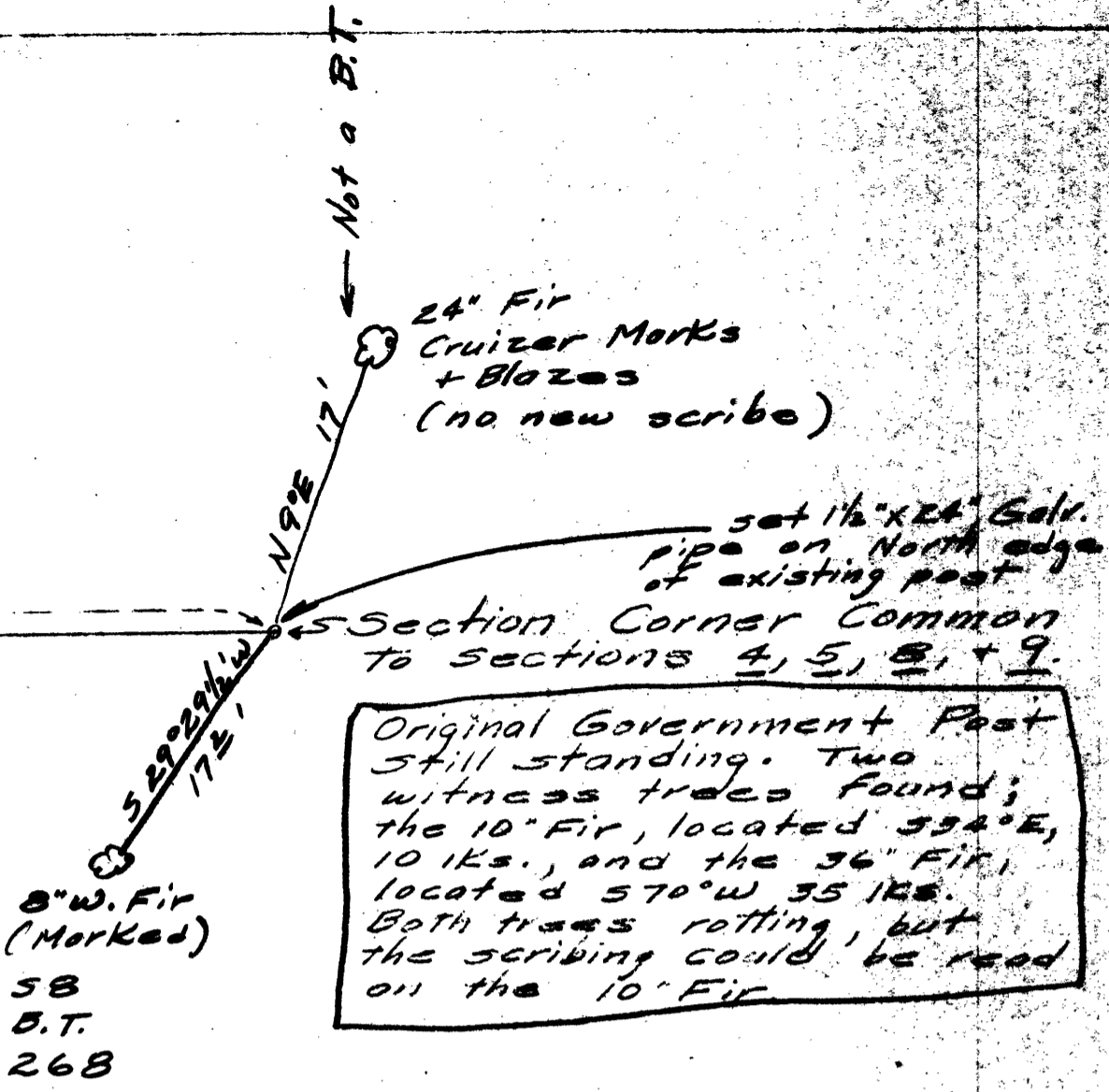
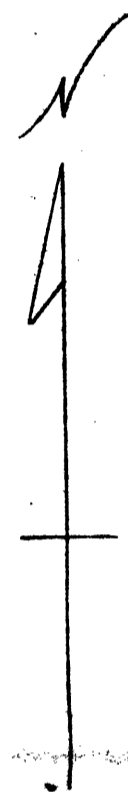


Center line of Power Line
 S 13° 36' 1/2" W, 1351.06'

Michael McKoen
 NW 1/4 of the NE 1/4
 of Section 8
 T. 29 S., R. 4 W., W. M.

West 1952.17'



Original Government Post
 still standing. Two
 witness trees found;
 the 10' Fir, located 33° E,
 10 1/2', and the 36' Fir,
 located 57° W 35 1/2'.
 Both trees rotting, but
 the scribing could be read
 on the 10' Fir.

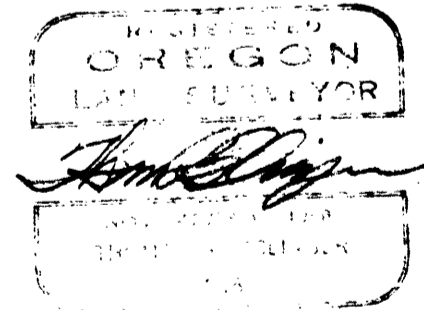
Description of Transmission Line

Beginning at a point on the
 section line between sections 5 and 8
 in T. 29 S., R. 4 W., W. M., Douglas County,
 Oregon; said point being located West,
 1952.17' from the section corner
 common to sections 4, 5, 8, and 9, in
 the above mentioned township; thence
 S 13° 36' 1/2" W, 1351.06' more or less
 according to the government survey.
 The above described line lies in the
 NW 1/4 of the NE 1/4 of Sec. 8, T. 29 S.,
 R. 4 W., W. M.

Survey Procedure

The section corner was located
 by chain and transit. The bearings were
 determined by solar observations.
 Distances were checked by stadia.
 The property lines as indicated on
 this map were taken from the
 U.S. Government township plot.

James D. [Signature]
 Surveyor



120 K.V. Transmission Line
 Crossing the property of
 the Michael McKoen estate
 Drawn by: T.R.E. April 9, 1951
 Checked by: T.R.E. Scale: 1" = 200'
 Approved by: C.C.H.
 The California Oregon Power Co.