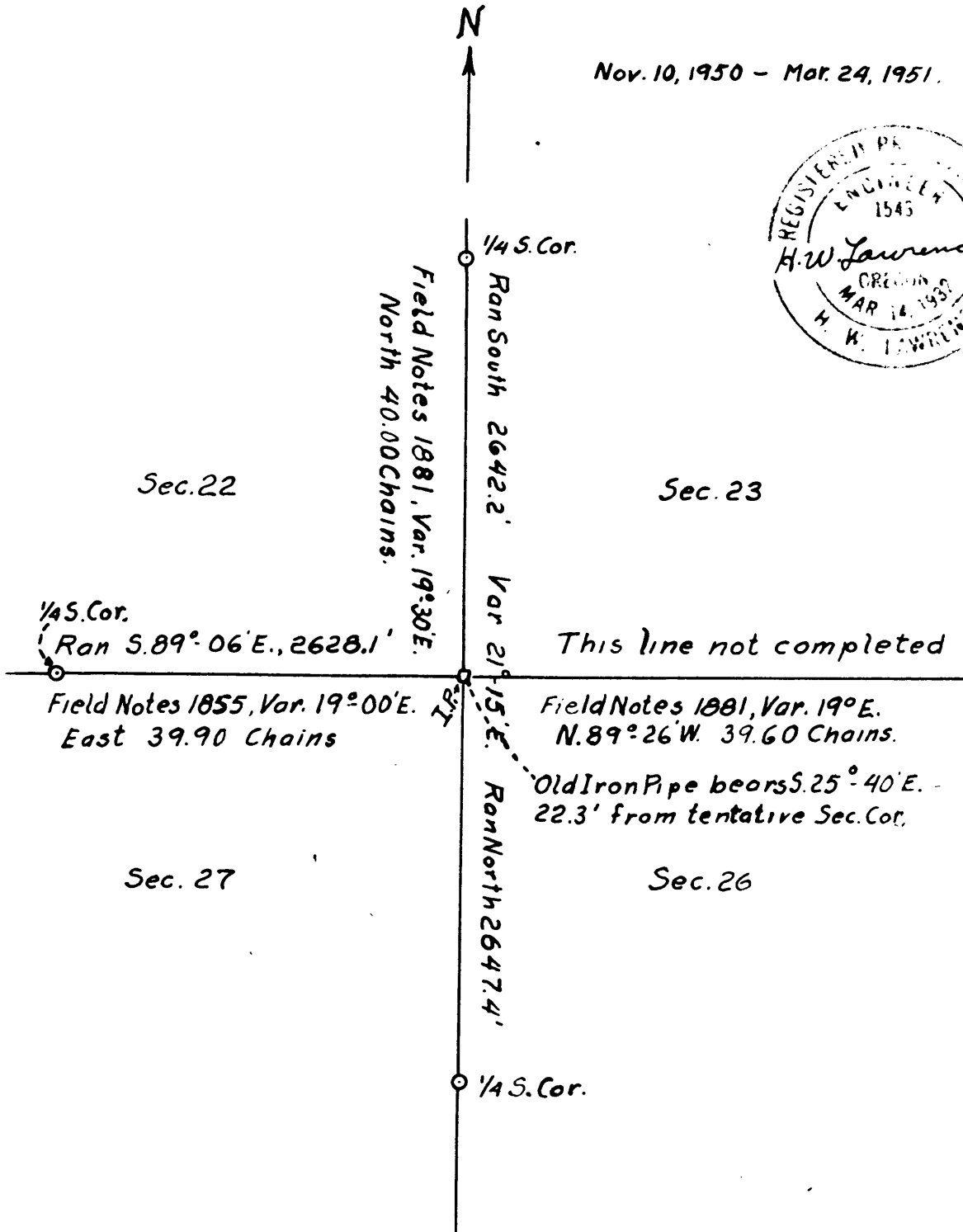


TENTATIVE SECTION CORNER
 TO SECTIONS 22, 23, 26, 27
 T. 32S., R. 6W.

Nov. 10, 1950 - Mar. 24, 1951.



A SURVEY
to find
SECTION CORNER
common to sections 22,
23, 26, and 27, T.32S., R.6 W.

FILED 4-23-51
RECEIVED

APR 7 1951

COUNTY SURVEYOR
CLATSOP COUNTY, ORE.

**COUNTY SURVEYORS FILE DATA
DO NOT REMOVE FROM OFFICE**

NARRATIVE OF SURVEY

for

SECTION CORNER common to Sections

22, 23, 26, and 27, T.32 S., R.6W.

This survey was made between November 10, 1950 and March 24, 1951, with a transit, long band chain, and range pole.

In order to make a survey for Mr. Martin, it was expedient to find the position of the section corner common to sections 22, 23, 26, and 27. This position was not recognized until lines were run from the three adjoining $\frac{1}{4}$ corners as shown on the accompanying blue print.

The position of an old iron pipe was not found until the three lines mentioned above were completed. Inasmuch as this pipe was not on record at the County Surveyor's Office and also since it did not conform to my measurements or any sign of a bearing tree, it was disregarded in favor of the new position, now indicated by an iron pipe from which the center of the remains of a root structure of a large fir bears N.61°E. 60 lks, dist., as given in the original survey notes.

No sizable trees for B.Ts. within 200 feet.

The N-S mile line run was taken as true N-S. giving a magnetic declination of 21°- 15' E.

