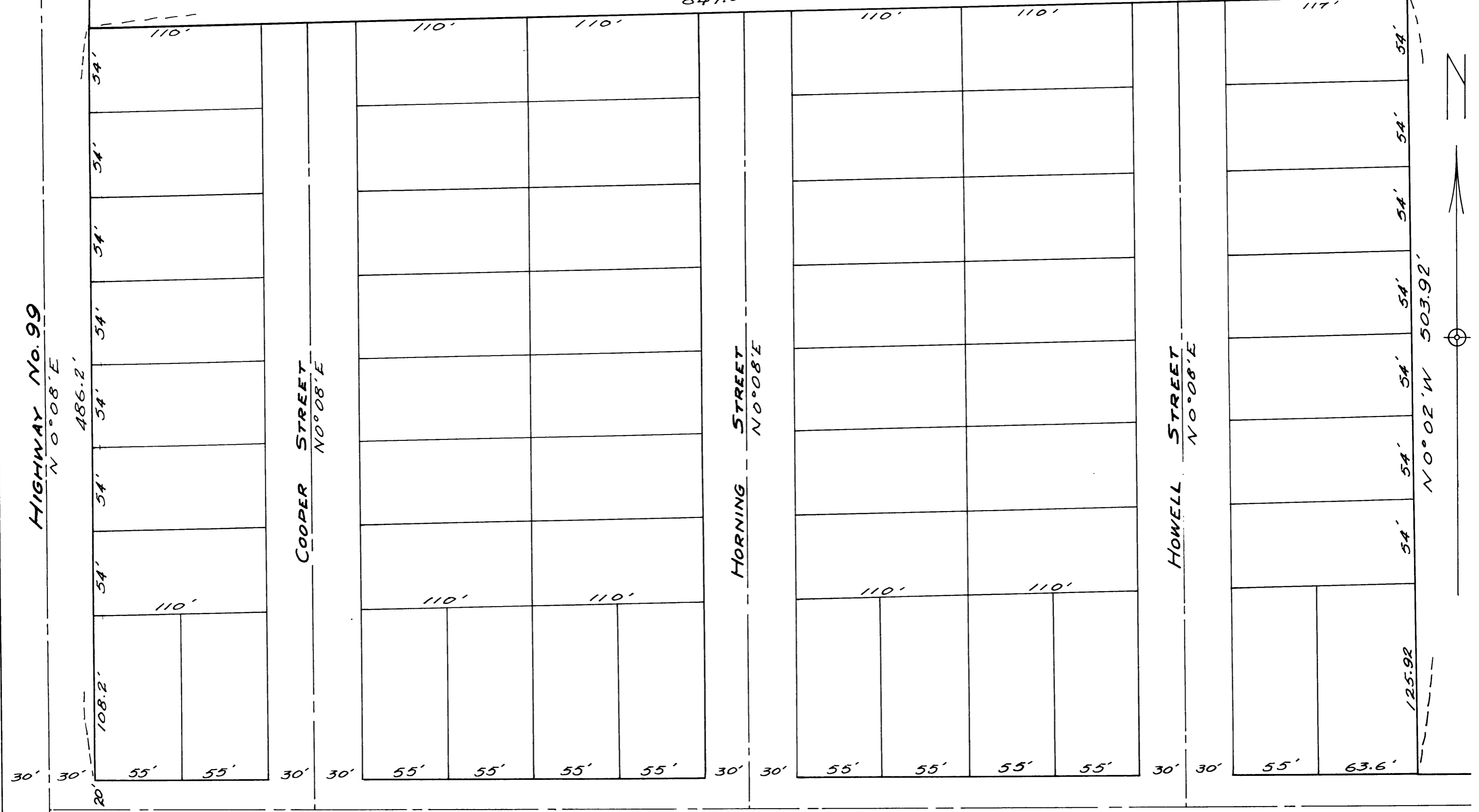


- 93 -

PARKROSE ADDITION

847.0'



HIGHWAY No. 99
N 0°08'E

COOPER STREET
N 0°08'E

MORNING STREET
N 0°08'E

HOWELL STREET
N 0°08'E

COUNTY ROAD

Edwin S. Woodford

PROPOSED SUBDIVISION OF
 LOTS 2 & 3 TRACT 1. PLAT 3.
 ROSEBURG ORCHARD CO.
 DOUGLAS COUNTY, ORE.

**COUNTY SURVEYORS FILE DATA
 DO NOT REMOVE FROM OFFICE**
 ROBERT W. HOWELL-OWNER
 Scale ~ 1-inch = 60ft.

CS FILE FOLDER

CONTAINS

MORE

INFORMATION