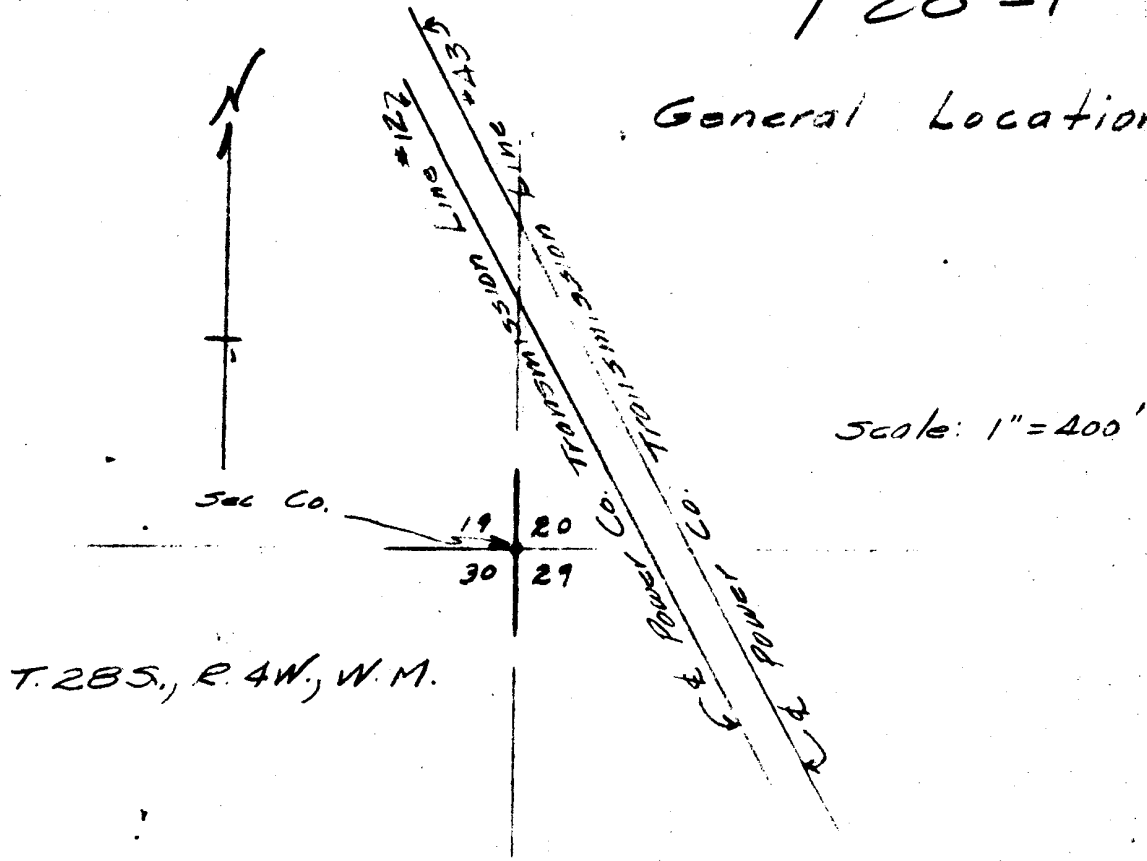


T28-4

General Location



Scale: 1" = 400'

T. 28 S., R. 4 W., W. M.

This tree has fallen in direction of corner. This tree used for reestablishment.

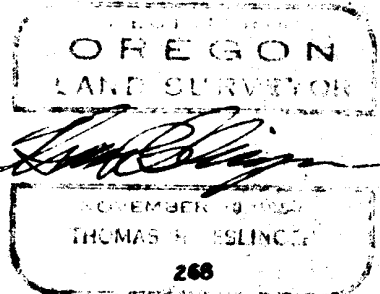
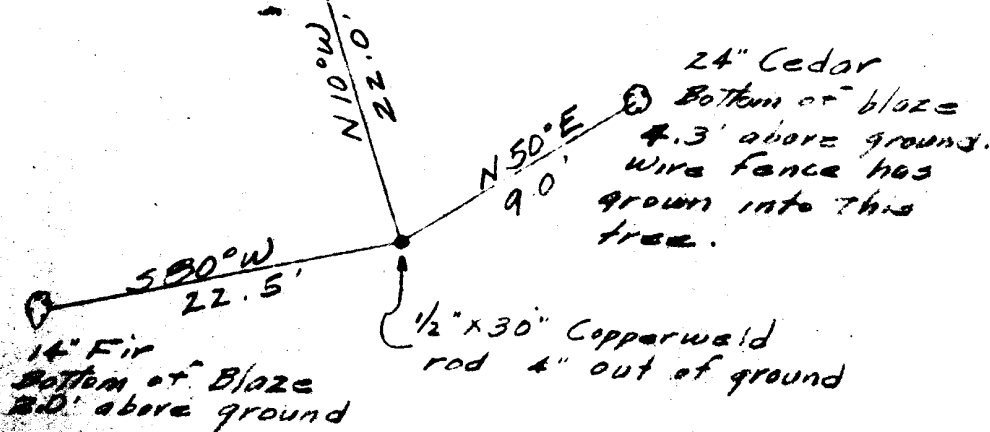
1/2" Copperweld rod. (see below)

24" Pine
Found down and rotted. could still read markings "520". Other B.T.s rotted on ground but some evidence of markings. Fallen trees left cavity in ground which checked for all other B.T.s.

Corner Details

7" Pine
Bottom of blaze 2.7' above ground

New trees blazed (no scribing)



2540/299³ Feb. 2, 1951