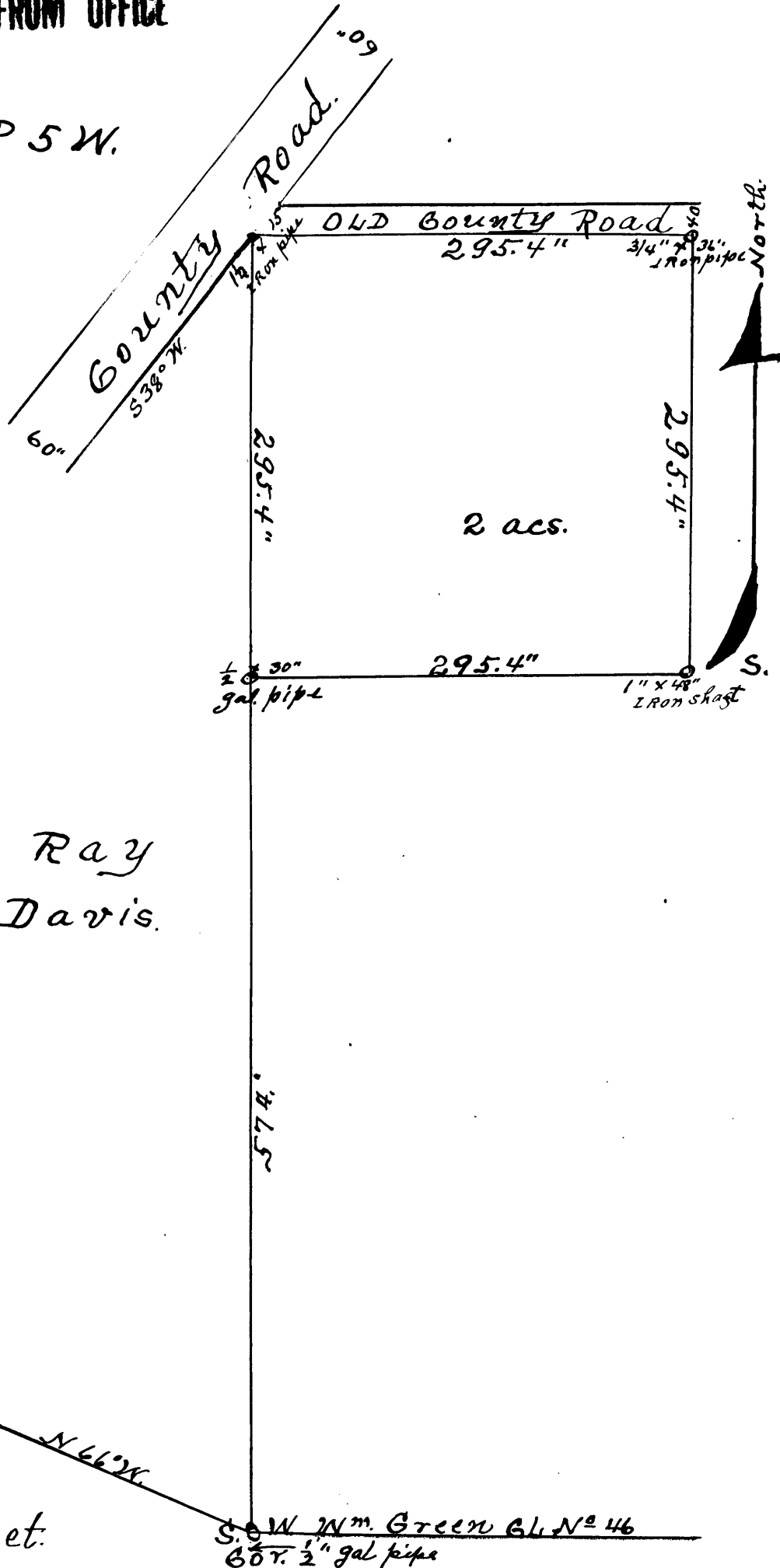


COUNTY SURVEYORS FILE DATA
DO NOT REMOVE FROM OFFICE

Tp. 25 S. R 5 W.

Sect. 3.



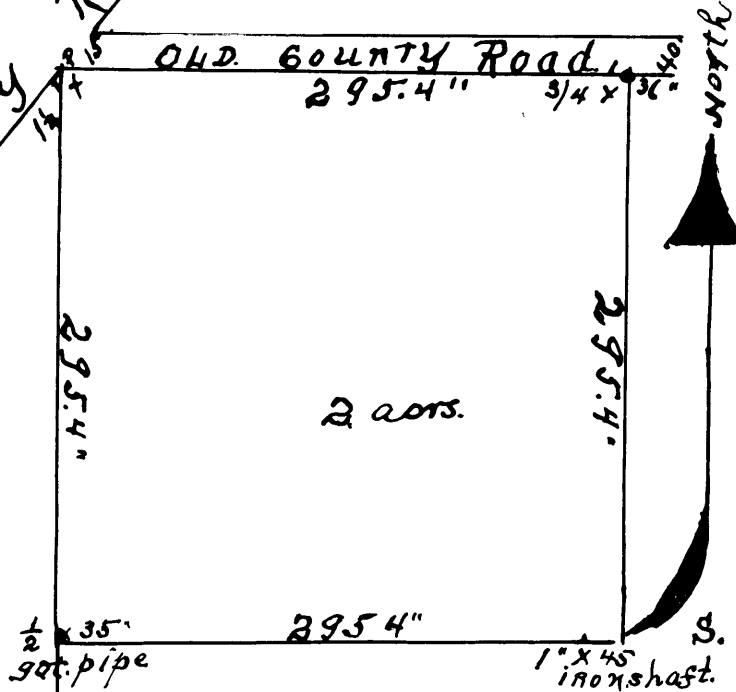
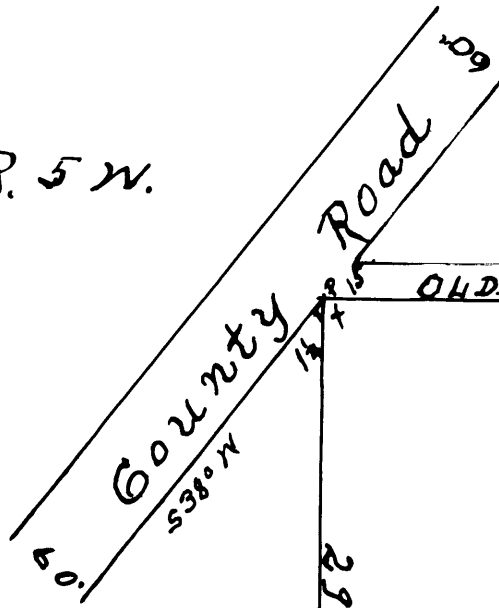
Scale 1" = 100 Feet.

40/266-1

COUNTY SURVEYORS FILE DATA
DO NOT REMOVE FROM OFFICE

Tp. 25 S. R. 5 W.

Sect 3.



Ray
Davis

Ray
Davis

FILED
RECEIVED
AUG 14 1950
COUNTY SURVEYOR
DOUGLAS COUNTY, OREGON

REGISTERED
OREGON
LAND SURVEYOR

Oscar F. Thiel

MARCH 10, 1944
OSCAR F. THIEL
4

47.5"

N. 66° W

Scale 1" = 100 Feet.

S. W. 20m Green DUG 71046.
G.O.R. $1/2$ gal pipe

Description.

RAY DAVIS.

No. _____

~~11111111~~1948.

Beginning at the Southwest corner of the Wm. Green D.L.C. in Tp. 25 S. R. 5 . which has an iron pipe 1/2 inch by 24 inches long thence North on claim line 574 feet to an 1/2 inch by 30 inch galvanized pipe the beginning point thence North 295.4 feet to a 1 1/2 inch iron pipe on Highway right-of-way thence running East 295.4 feet to a 3/4 inch by 36 inches long thence South and parallel with the West line 295.4 feet to an ~~iron pipe 3/4~~ inch by steel round shaft 1 inch by 36 inches long thence West 295 .4 feet the beginning point.

All in Township 25 South Range 5 West Willamette Meridian Douglas County Oregon, and in section 3.

O. F. Thiel

FILED
RECEIVED

AUG 1 - 1950

COUNTY SURVEYOR
DOUGLAS COUNTY, ORE.

REGISTERED
OREGON
LAND SURVEYOR

O. F. Thiel

MARCH 10, 1944
OSCAR F. THIEL
4

c.s. 40/266