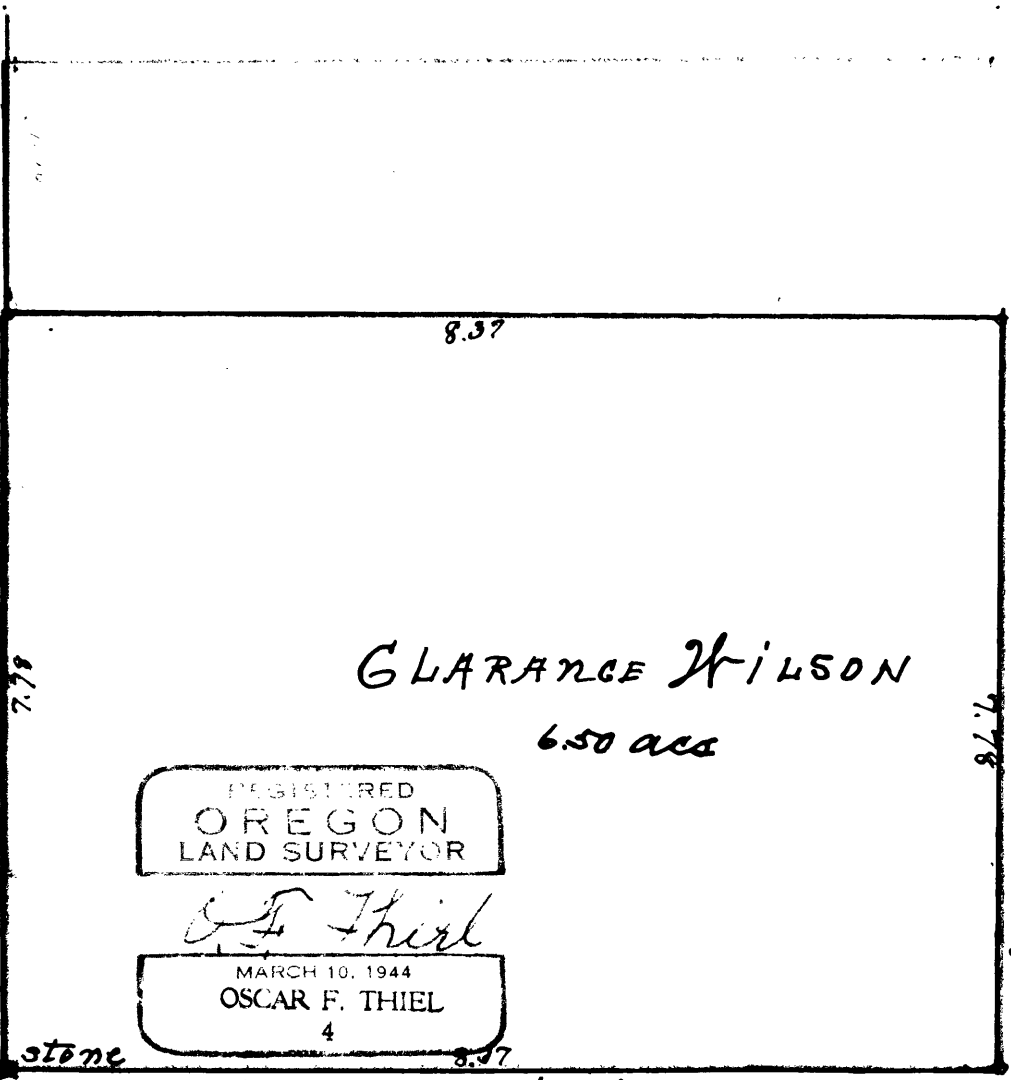


FILED
RECEIVED
AUG 14 1950
COUNTY SURVEYOR
DOUGLAS COUNTY, ORE.



Elmer
Daugherty

CLARENCE WILSON
6.50 acs

REGISTERED
OREGON
LAND SURVEYOR

O. F. Thiel

MARCH 10, 1944
OSCAR F. THIEL
4

stone

stone 'Halo' Road No 63

N.E. cor of
of D.C.
No 40

N.W. cor of
D.L.C. No 40

N. 89° 30' E.

scale 1" = 132 ft.

1 - 2

COUNTY SURVEYORS FILE DATA
DO NOT REMOVE FROM OFFICE

T. 23-5 Sec 3

FILE 265-DRAWER 4

No.

DESCRIPTION.
Clarence Wilson.
Tp. 23 S.R.5 W.

1950

Beginning at a point 611in^gs North of the N.E. corner of the George A. Burt D.L.C. No.40 and the N. W. corner of the Lindsay Applegate D.L.C. No.42. thence running N 89 30 E 8.57 chains to a steel shaft 1 1/2 inches 43 inches long. thence North 7.78 chains to a 3/4 inch by 24 inches long thence S.89 30 W. 8.37 chains to a 3/4 inch by 24 inches long iron pipe on property line fence thence South 7.78 chains along fence line to beginning point.

All in section 3 Township 23 South Range 5 West Willamette Meridian Douglas County Oregon, containing 6.50 acres.

O. F. Thiel

FILED
RECEIVED
AUG 14 1950
COUNTY SURVEYOR
DOUGLAS COUNTY, ORE.

REGISTERED
OREGON
LAND SURVEYOR
O. F. Thiel
MARCH 10, 1944
OSCAR F. THIEL
4