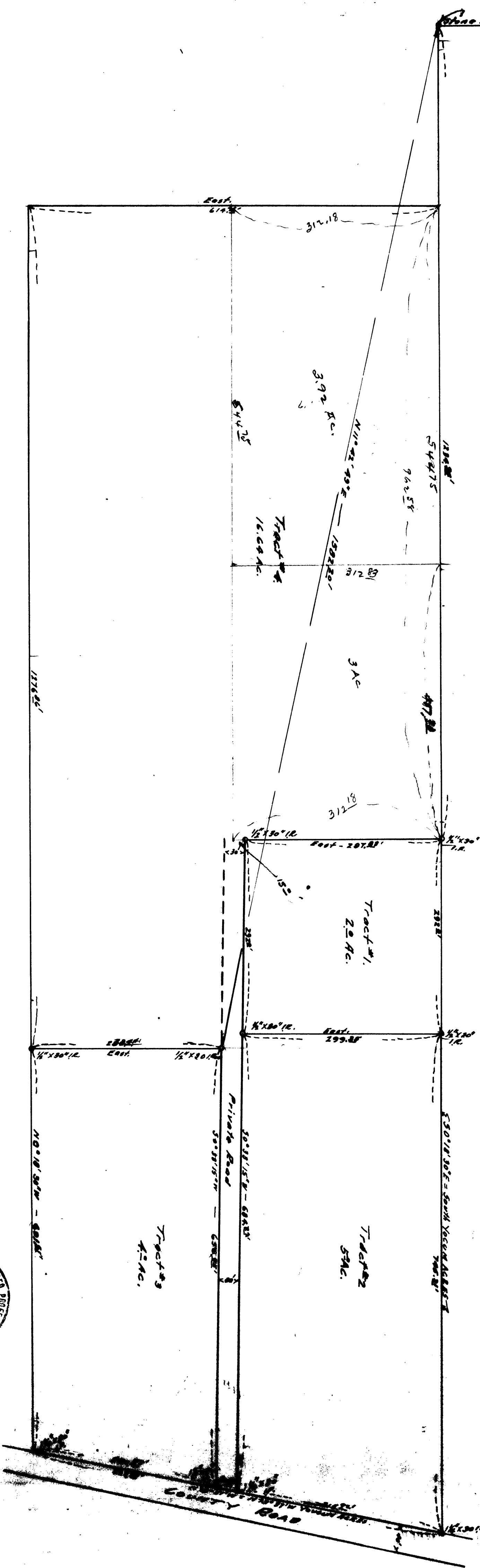
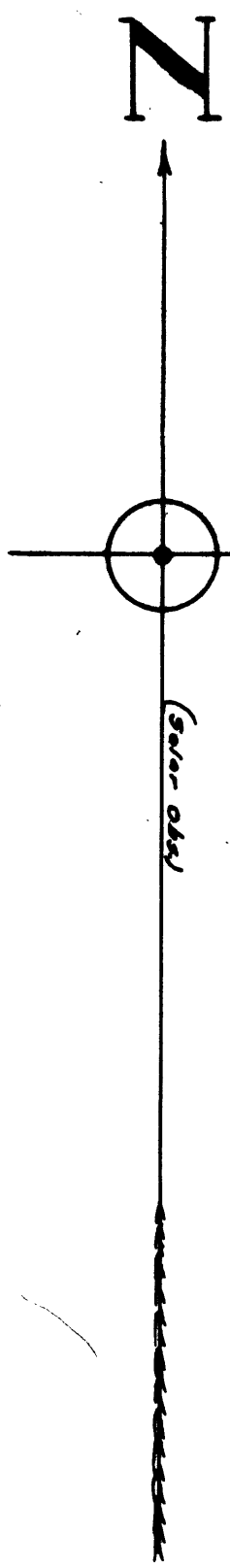
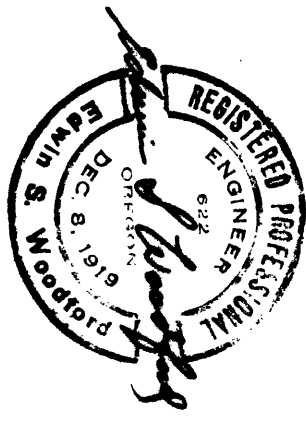


MAP

SHOWING LANDS SURVEYED
 IN
 LOTS 2-3 BLOCK-1
 ELEMENTARY FRUIT LANDS
 SCALE-1/4"=100'



FILED
 RECEIVED
 JUN 9 1961
 COUNTY SURVEYOR
 DOUGLAS COUNTY, ORE.



PROPERTY OWNERS FOR DATA
 DO NOT REMOVE THESE STICKERS

CS FILE FOLDER

CONTAINS

MORE

INFORMATION