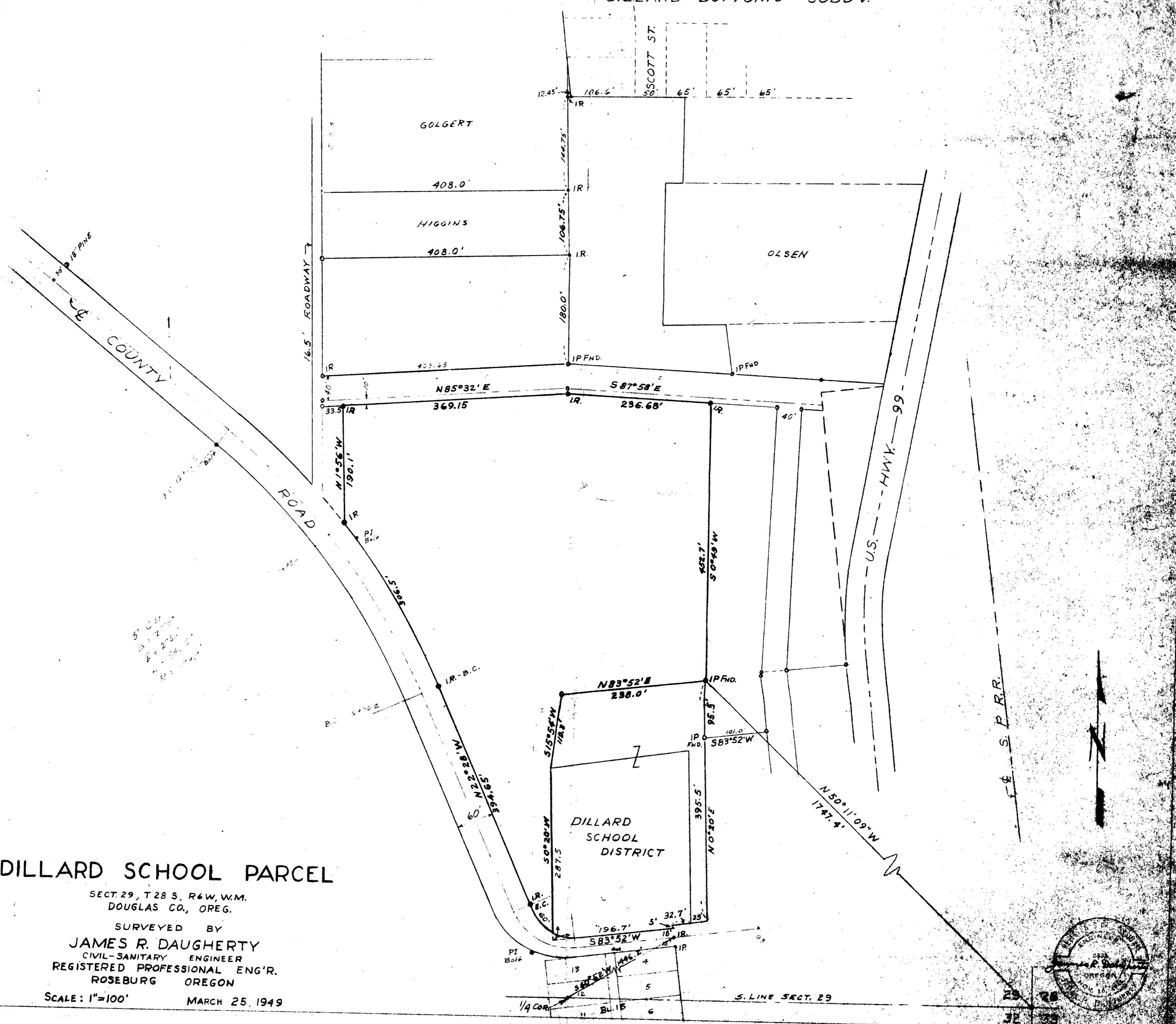


DILLARD BOTTOMS SUBD'V.



DILLARD SCHOOL PARCEL

SECT. 29, T 28 S, R 6 W, W.M.  
DOUGLAS CO., OREG.

SURVEYED BY  
**JAMES R. DAUGHERTY**  
CIVIL-SANITARY ENGINEER  
REGISTERED PROFESSIONAL ENG'R.  
ROSEBURG OREGON

SCALE: 1"=100' MARCH 25, 1949



FOR ORIGINAL  
SEE M 23-17

G.L.B. No. 40/254 DILLARD SCHOOL