

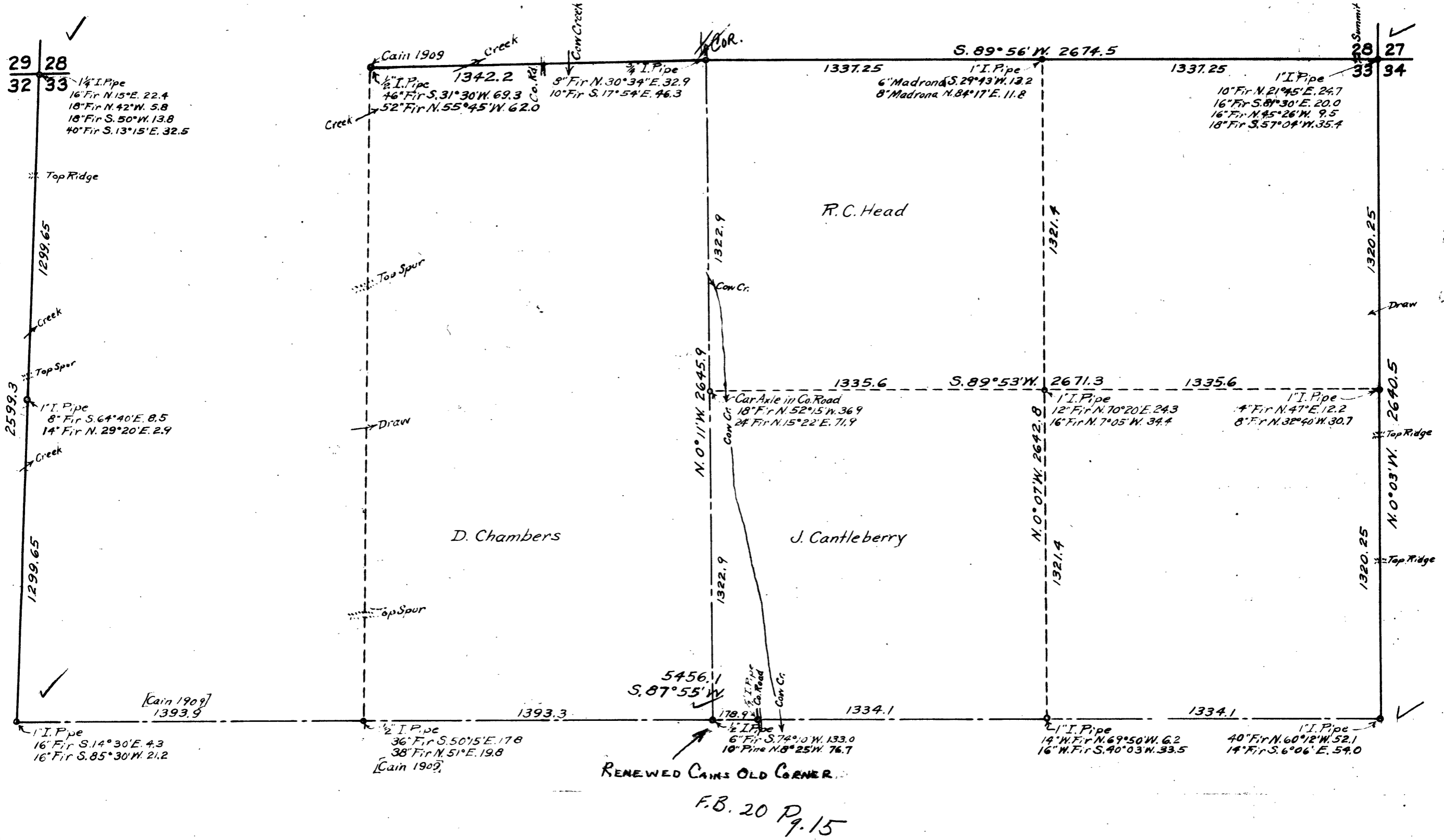
COUNTY SURVEYORS FILE DATA
DO NOT REMOVE FROM OFFICE

COUNTY SURVEYOR'S OFFICE
DOUGLAS COUNTY, OREGON
Surveys in
SECTION 33, T. 31 S., R. 4 W. W.M.

REGISTERED
OREGON
LAND SURVEYOR

Geo. J. Wendert

MADE AND DRAWN BY
George J. Wendert



48° Fir S. 51° 15' E. 84.5
30° Oak S. 75° W. 32.3
14° Fir N. 75° 5' W. 33.1
10° Maple N. 39° 25' E. 50.3
1" I. Pipe

32 | 33
5 | 4

DATED - 1950

C.S. File No. 40/250B