

COUNTY SURVEYORS FILE DATA  
DO NOT REMOVE FROM OFFICE

3/4" I. Pipe (Set by Baker)  
1/4 Corner between  
Sections 19 + 30.

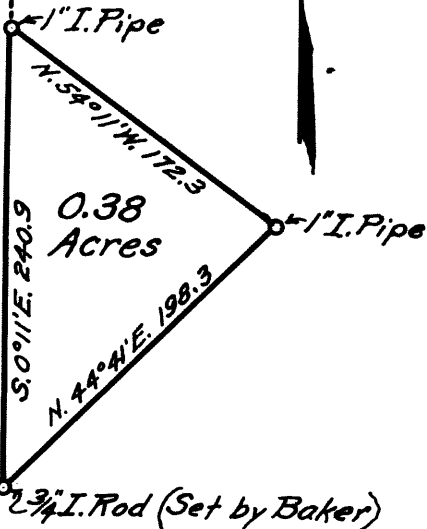
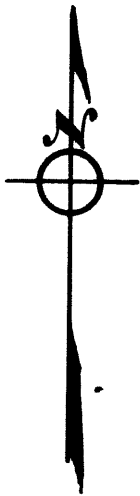
COUNTY SURVEYOR'S OFFICE  
DOUGLAS COUNTY, OREGON  
SURVEY FOR  
J. B. MOORE  
SECTION 30. T. 32 S. R. 5 W.

Dec. 24, 1949

Scale 1"=100'

Geo. J. Wenderoth, Surveyor.

S. 0° 11' E. 694.8



REGISTERED  
OREGON  
LAND SURVEYOR

*Geo. J. Wenderoth*

MARCH 10, 1944  
George J. Wenderoth  
5