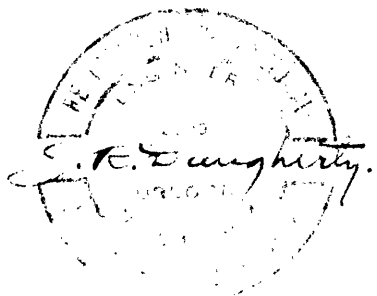


FRANK KENNADAY
MYRTLE CREEK OREGON

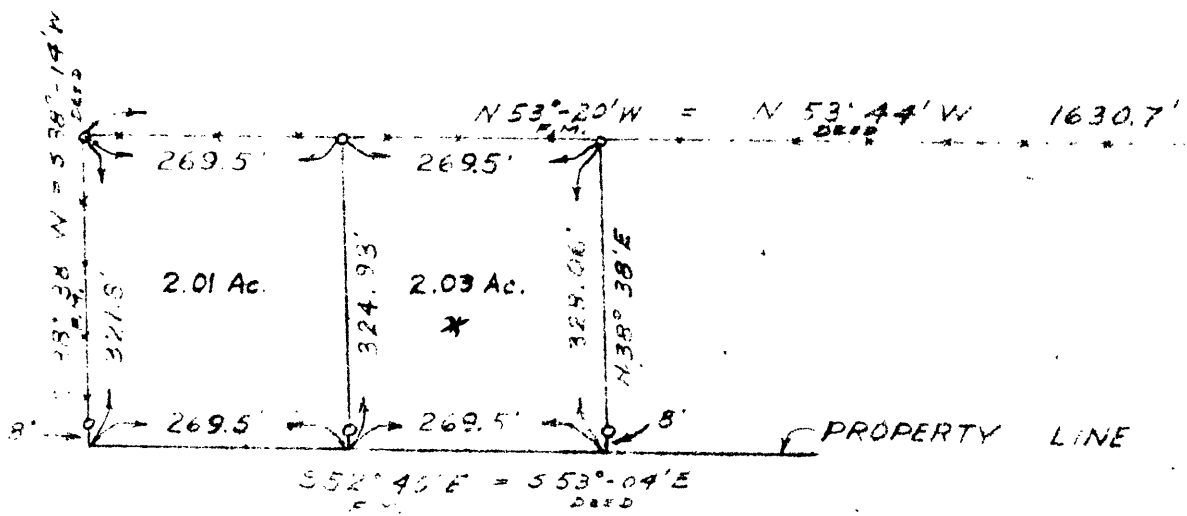
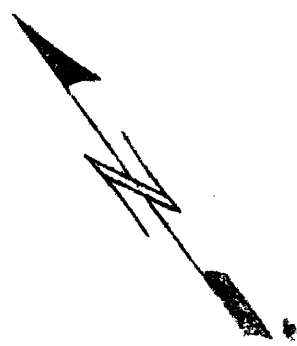
JAMES R DAUGHERTY
CIVIL-SANITARY ENGINEER
REGISTERED PROFESSIONAL
ENGINEER
ROSEBURG OREGON



DATE: Nov 1, 48 SCALE: 1" = 200'

SECT. 33 T.29S. R.5W W.M.
DOUGLAS COUNTY ORE

COUNTY SURVEYORS FILE DATA
DO NOT REMOVE FROM OFFICE



COUNTY SURVEYORS FILE DATA
DO NOT REMOVE FROM OFFICE

NOTE: ○ DENOTES 1/2 IRON PIN SET
UNLESS OTHERWISE NOTED

