

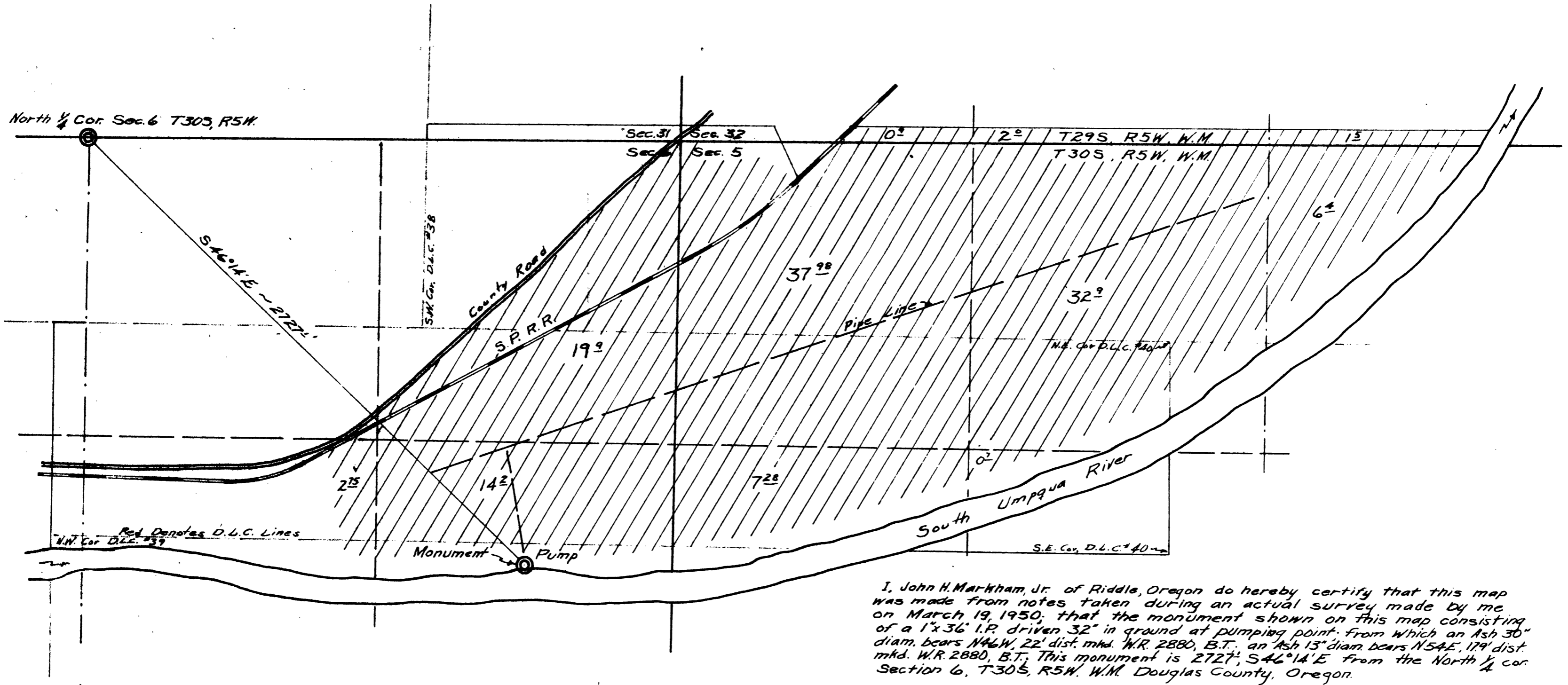
PREPARED FOR
G. N. WEAVER

SHOWING

PROPOSED IRRIGATION DEVELOPMENT

SCALE 1" = 400'

MARCH 1950



I, John H. Markham, Jr. of Riddle, Oregon do hereby certify that this map was made from notes taken during an actual survey made by me on March 19, 1950; that the monument shown on this map consisting of a 1' x 36" I.P. driven 32" in ground at pumping point, from which an Ash 30" diam. bears N46W, 22' dist. mkd. W.R. 2880, B.T.; an Ash 13" diam bears N54E, 179' dist. mkd. W.R. 2880, B.T.; This monument is 2727', S46°14'E from the North 1/4 Section 6, T30S, R5W, W.M. Douglas County, Oregon.

John H. Markham, Jr.

please file this map