

MAP  
SHOWING LANDS SURVEYED  
FOR  
E.G. MEADE.  
Scale-1"=200'

FILED  
RECEIVED

JUN 9 1961

COUNTY SURVEYOR  
DOUGLAS COUNTY, ORE.

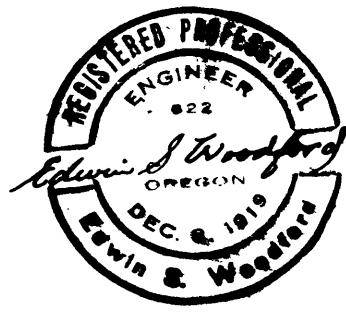
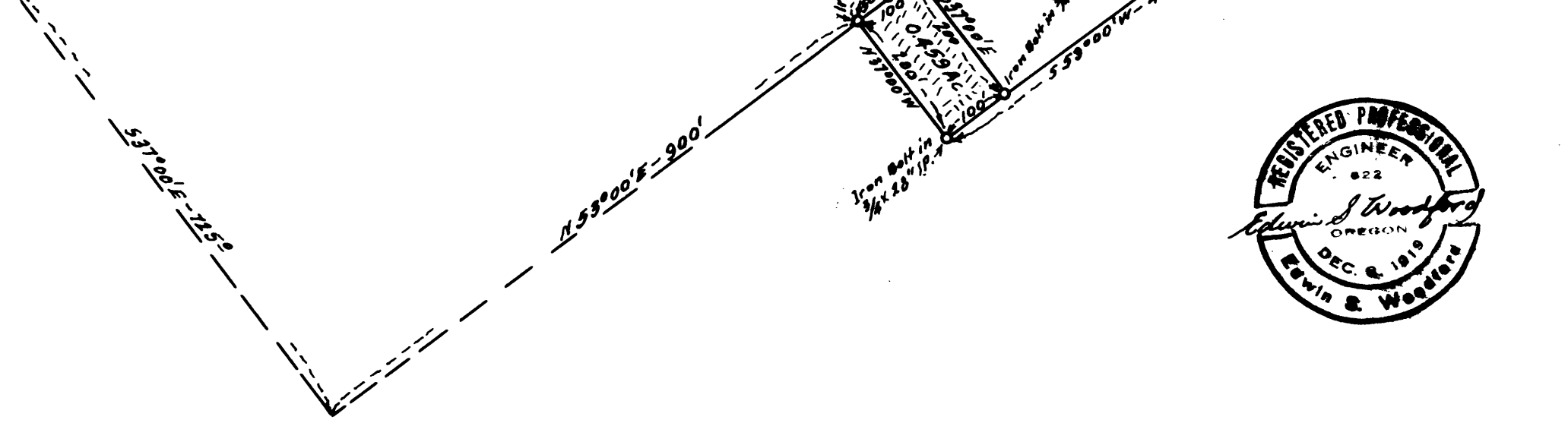
COUNTY SURVEYORS FILE DATA  
DO NOT REMOVE FROM OFFICE

N.W. Cor Sec 30  
T. 25-S- R. 5-W  
6 W.M.

South - 13192'

INITIAL POINT  
OLD TOWN of WINCHESTER ORE.  
997° West

Iron Bolt old Man Found.  
NW Cor Blk 26 old Town  
of WINCHESTER ORE.  
Iron Bolt in 1/4 x 28" IP.  
Iron Bolt in 1/4 x 28" IP.  
Iron Bolt in 1/4 x 28" IP.



E. G. Woodford - Civil Engineer

Dec. 1949.

CS FILE FOLDER

CONTAINS

MORE

INFORMATION