

FILED
RECEIVED

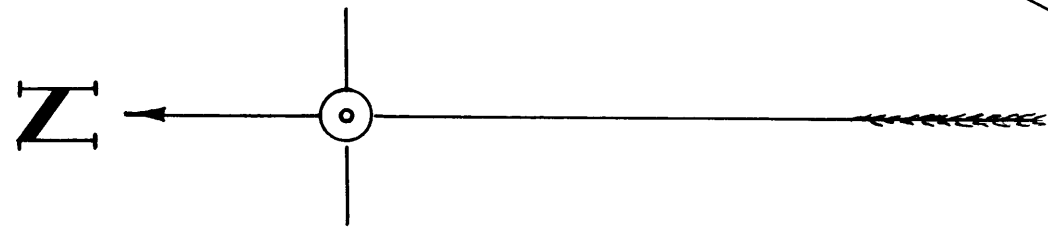
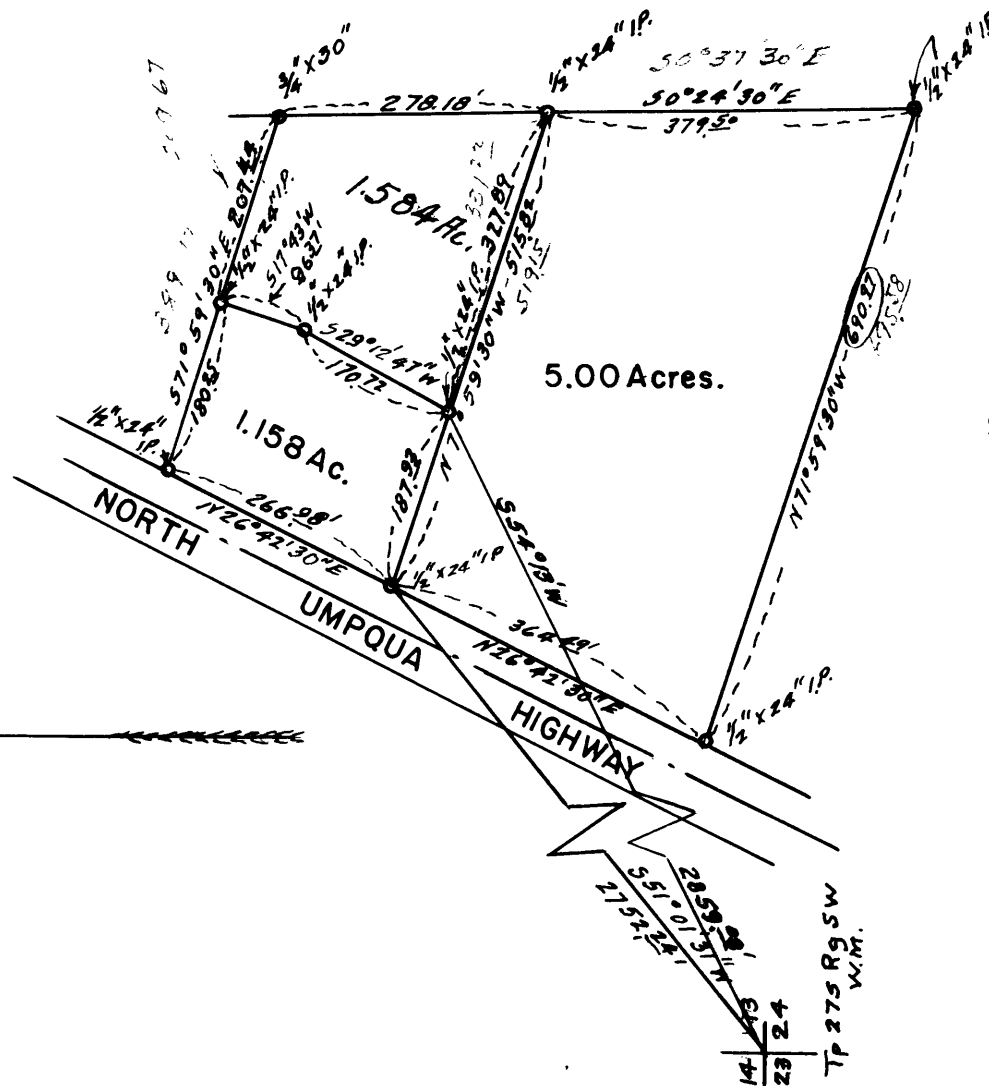
JUL 1961

COUNTY SURVEYOR
DOUGLAS COUNTY, ORE.



MAP SHOWING

Portion of S.H. HAAS Property
IN
Section 13-Tp.27S-Rg.5W.WM.
Scale - 1"=200'



**COUNTY SURVEYORS FILE DATA
DO NOT REMOVE FROM OFFICE**