

Lot 12 + EAST 180.9'

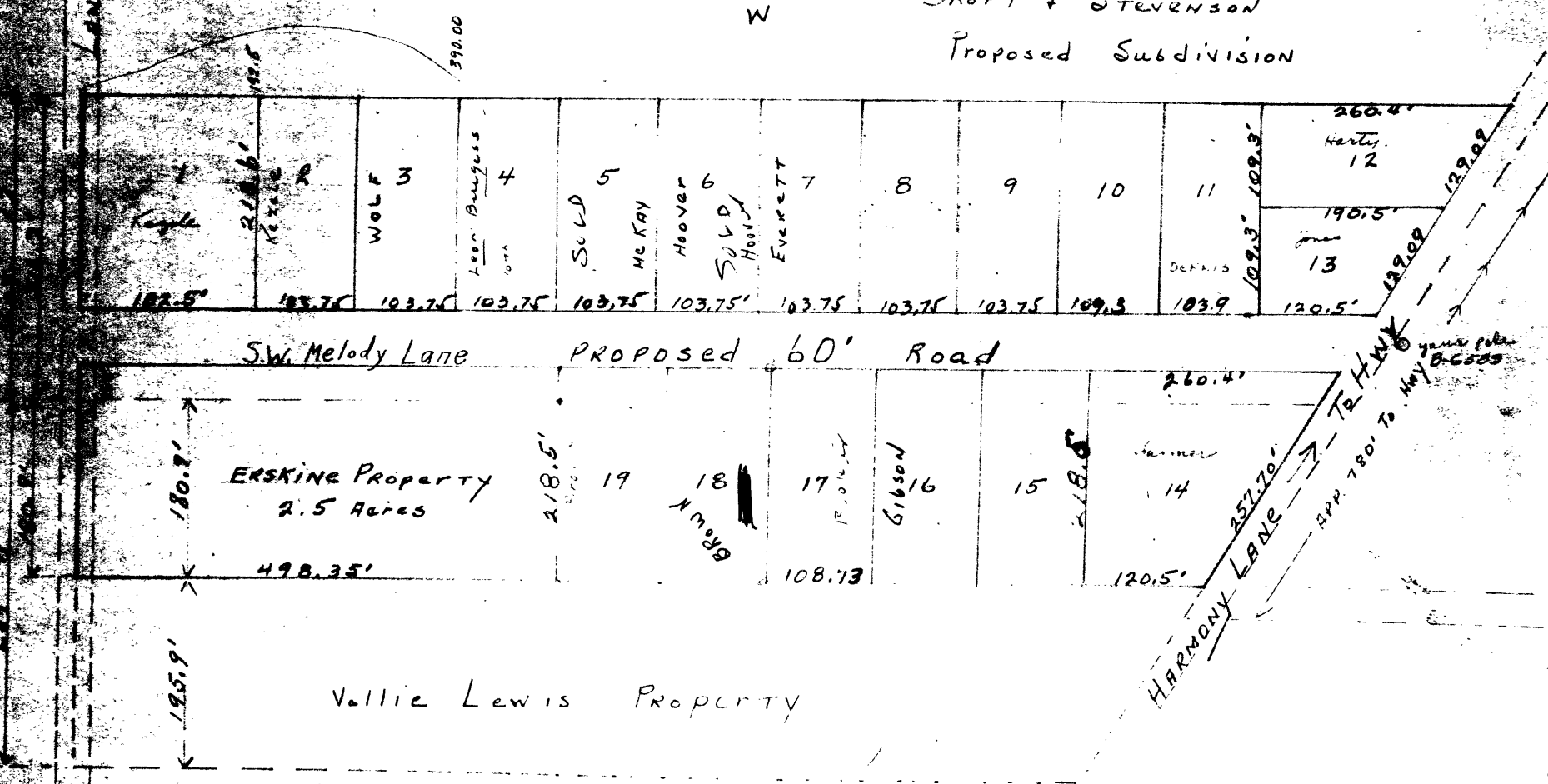
Lot 11 FISK FRUIT FARMS,

Douglas County, Ore

E
N S
W

- Lot 1 - John Kezele
- " 2 Howard Harty
- " 3 Wm. Jones
- " 4 Pauline Farmer
- " 11 CHAS. L. DENNIS

SHORT + STEVENSON
Proposed Subdivision



C.S. File 40/193