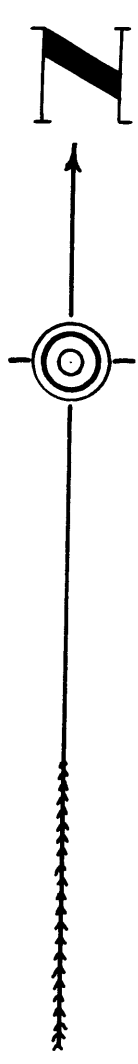


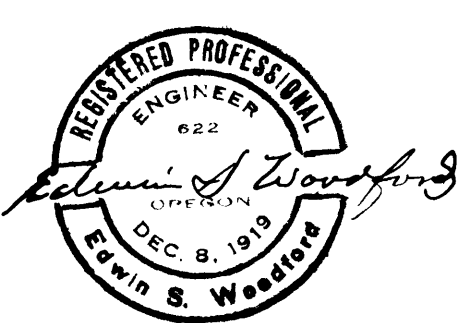
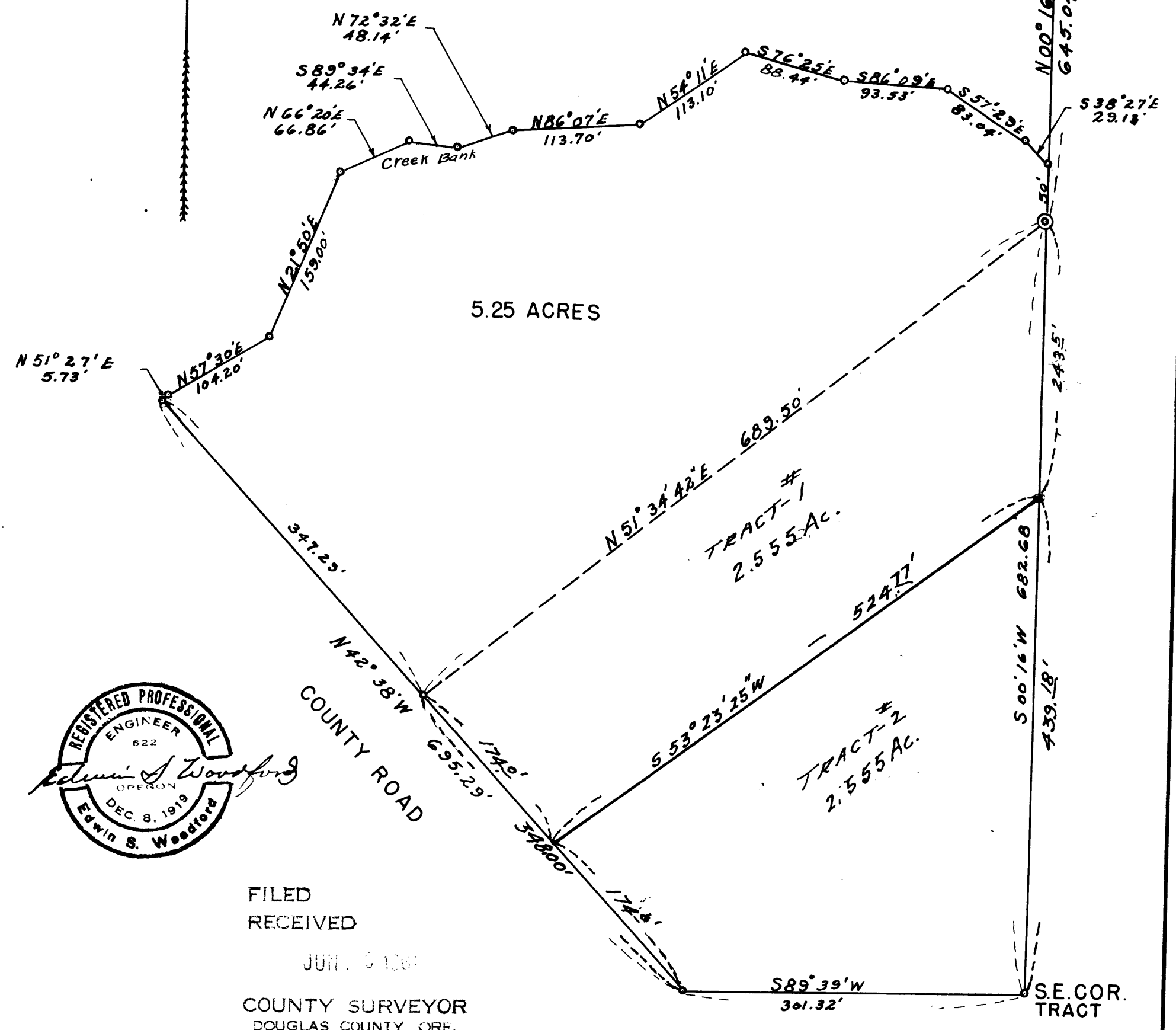
COUNTY SURVEYORS FILE DATA
DO NOT REMOVE FROM OFFICE

MAP
SHOWING PORTION
OF
MRS. O. HOUSTON RANCH
SEC. 36. TWP 26 S. RG 7 W., W.M.
SCALE 1" = 100'



N.E. COR.
SEC. 36

5.25 ACRES



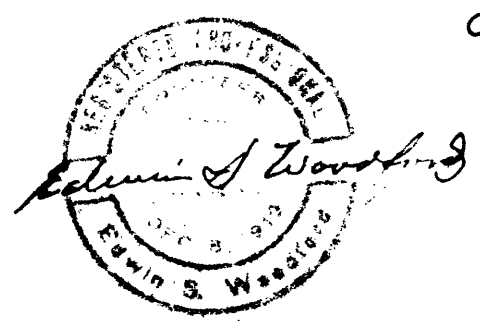
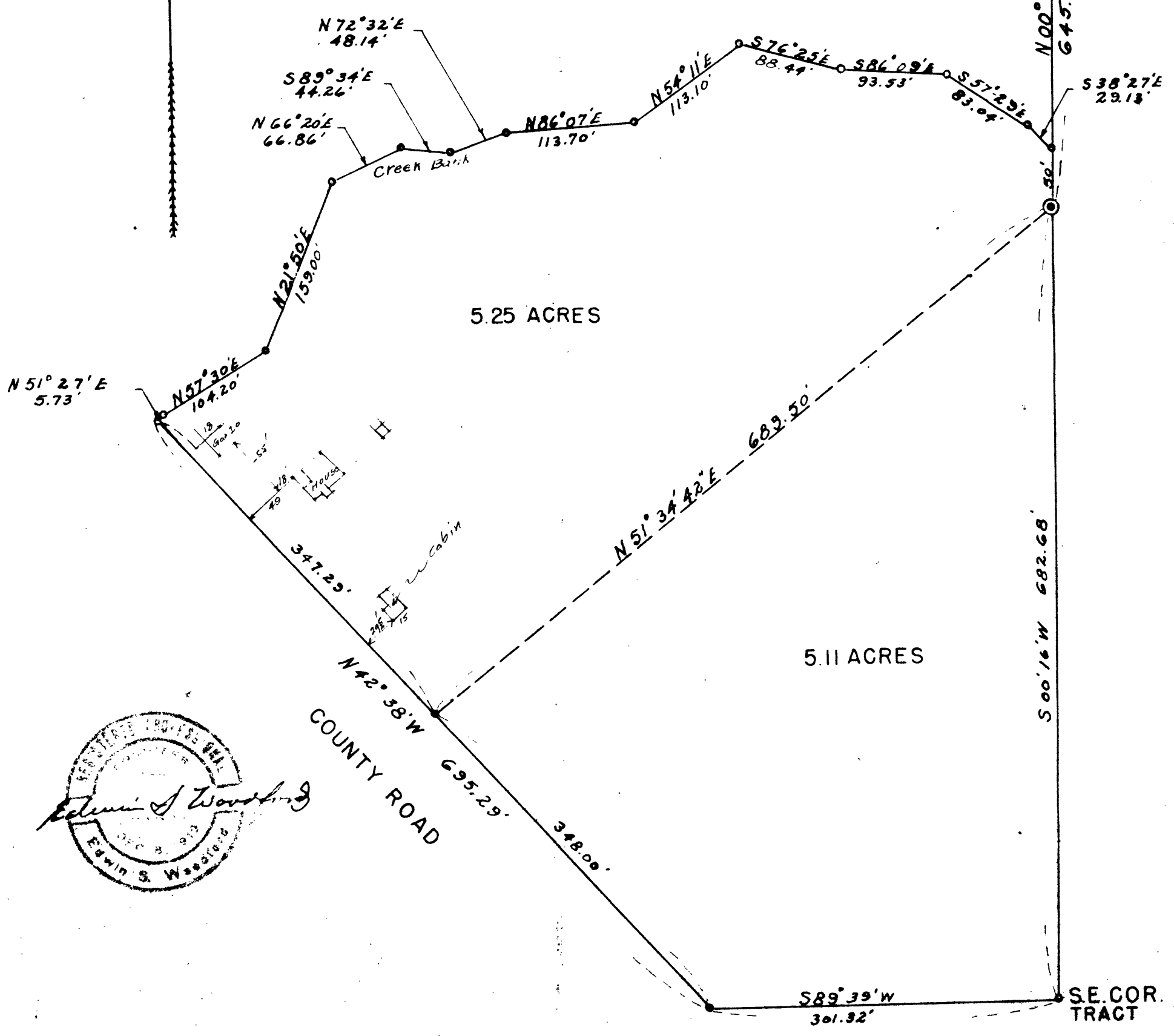
FILED
RECEIVED
JUN 10 1961
COUNTY SURVEYOR
DOUGLAS COUNTY, ORE.

**MAP
SHOWING PORTION
OF
MRS. O. HOUSTON RANCH
SEC. 36. TWP 26 S. RG 7 W., W.M.**

SCALE 1" = 100'



N.E. COR.
SEC. 36



1 - Transp
2 - Points

CS FILE FOLDER

CONTAINS

MORE

INFORMATION