

For Rasmussen

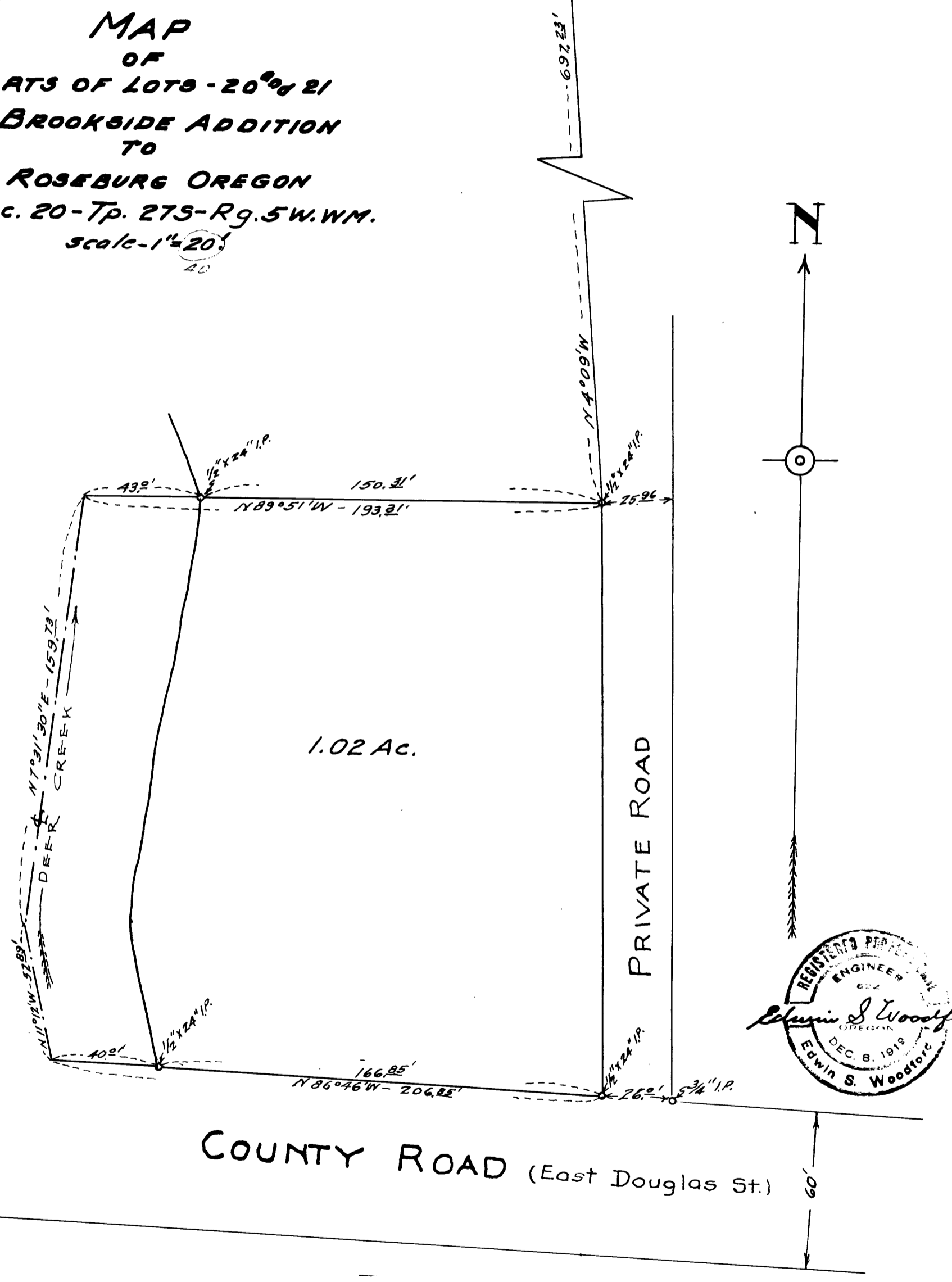
RECEIVED
JUL 1911

COUNTY SURVEYORS FILE DATA
DO NOT REMOVE FROM OFFICE

COUNTY SURVEYOR
MULTI-COUNTY, ORE.

MAP
OF
PARTS OF LOTS - 20th & 21
1st BROOKSIDE ADDITION
TO
ROSEBURG OREGON
Sec. 20 - Tp. 27S - Rg. 5W. WM.
scale - 1" = 20'
20

N.W. Cor. Lot 21
1st BROOKSIDE ADD
TO
ROSEBURG ORE.



CS FILE FOLDER

CONTAINS

MORE

INFORMATION