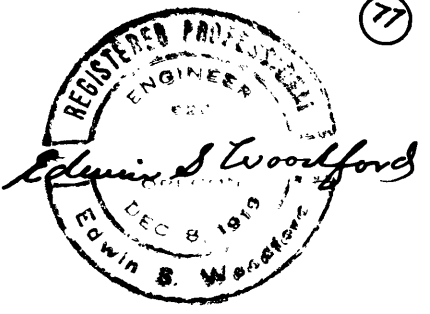
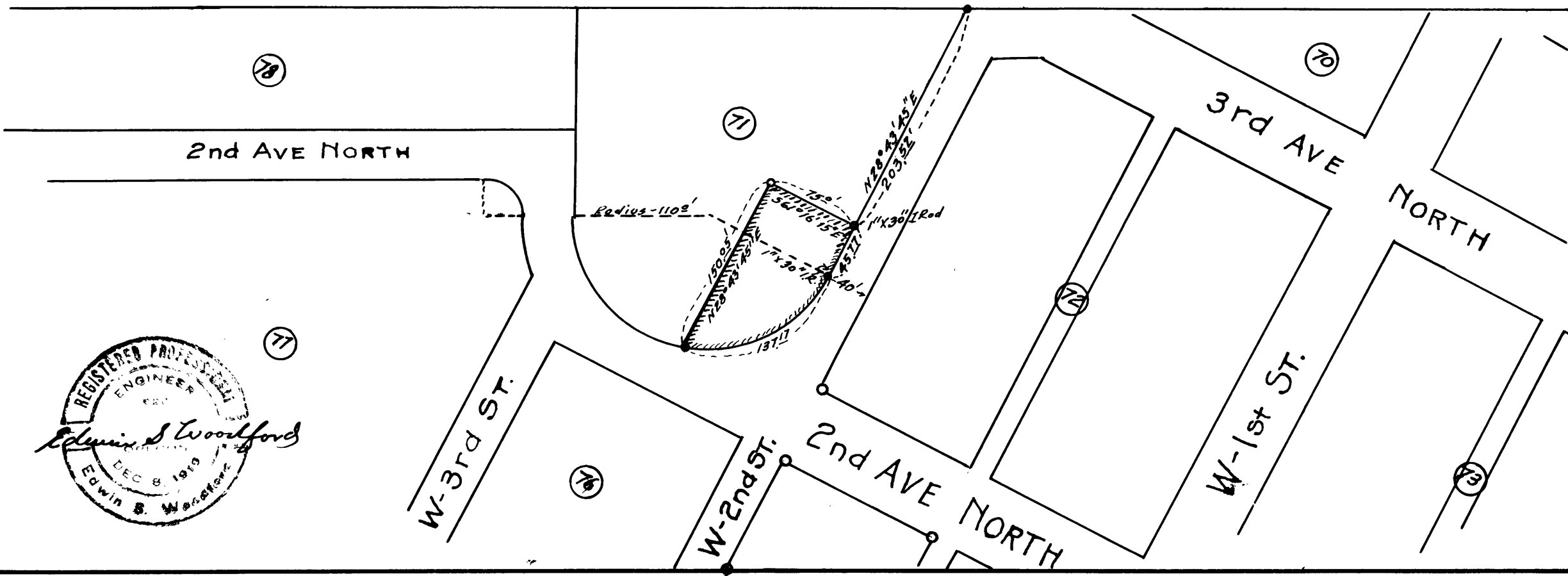


COUNTY SURVEYORS FILE DATA
DO NOT REMOVE FROM OFFICE

MAP
SHOWING PROPERTY OF HENRY BAILEY
IN
BLOCK-71 - SUBDIVISION "A"
KINNEYS IMPROVED PLAT
OF
THE CITY OF ROSEBURG OREGON.
SCALE-1"=100'

FILED
RECEIVED

COUNTY SURVEYOR
POLK COUNTY OREGON



CS FILE FOLDER

CONTAINS

MORE

INFORMATION