

44420100

- 17 A -

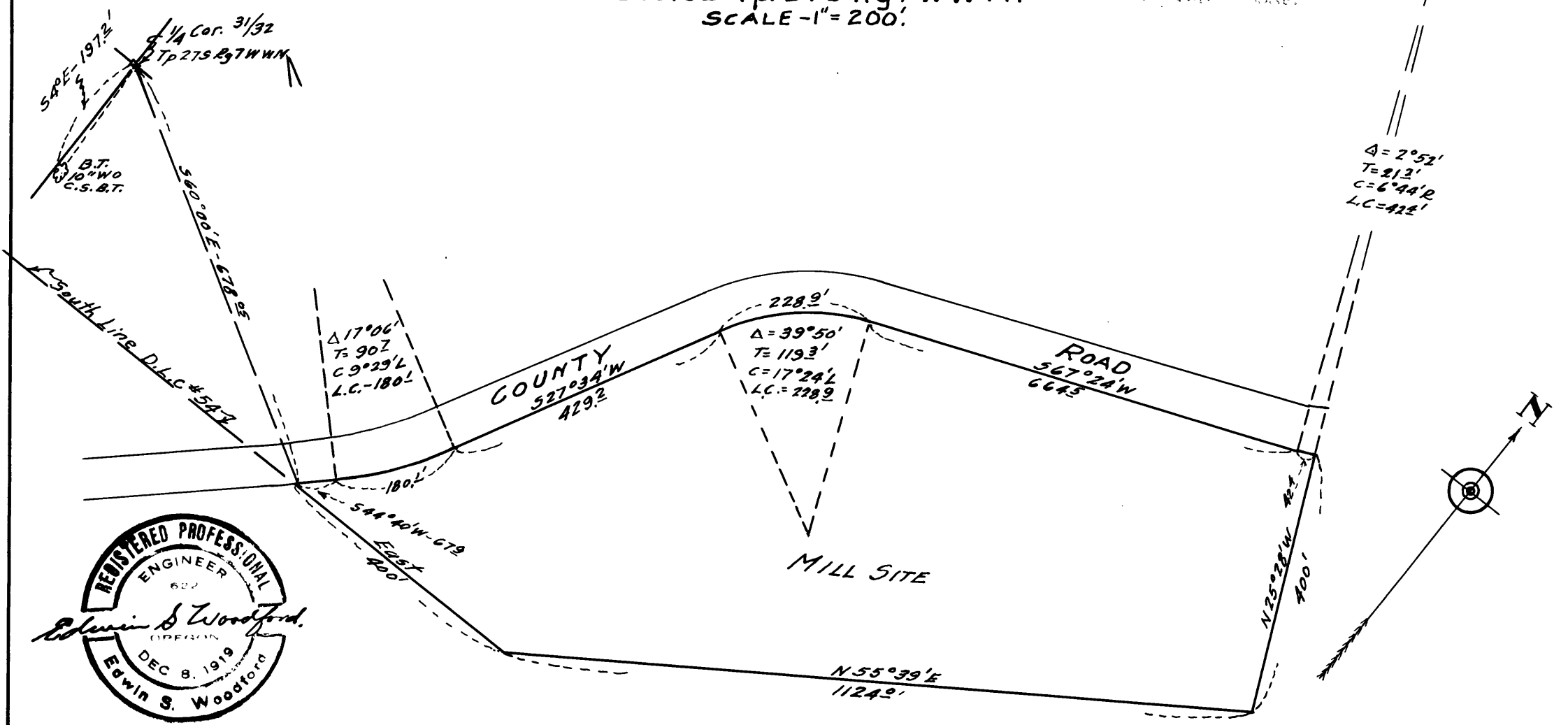
COUNTY SURVEYORS FILE DATA
DO NOT REMOVE FROM OFFICE

FILED
RECEIVED

JUL 1 1971

COUNTY SURVEYOR,
DOUGLAS COUNTY, ILL.

MAP
OF
PROPOSED MILL SITE.
Sec. 32 Tp. 27S Rg 7 WWM.
SCALE - 1" = 200'



C.S. 40/144-2

CS FILE FOLDER

CONTAINS

MORE

INFORMATION