

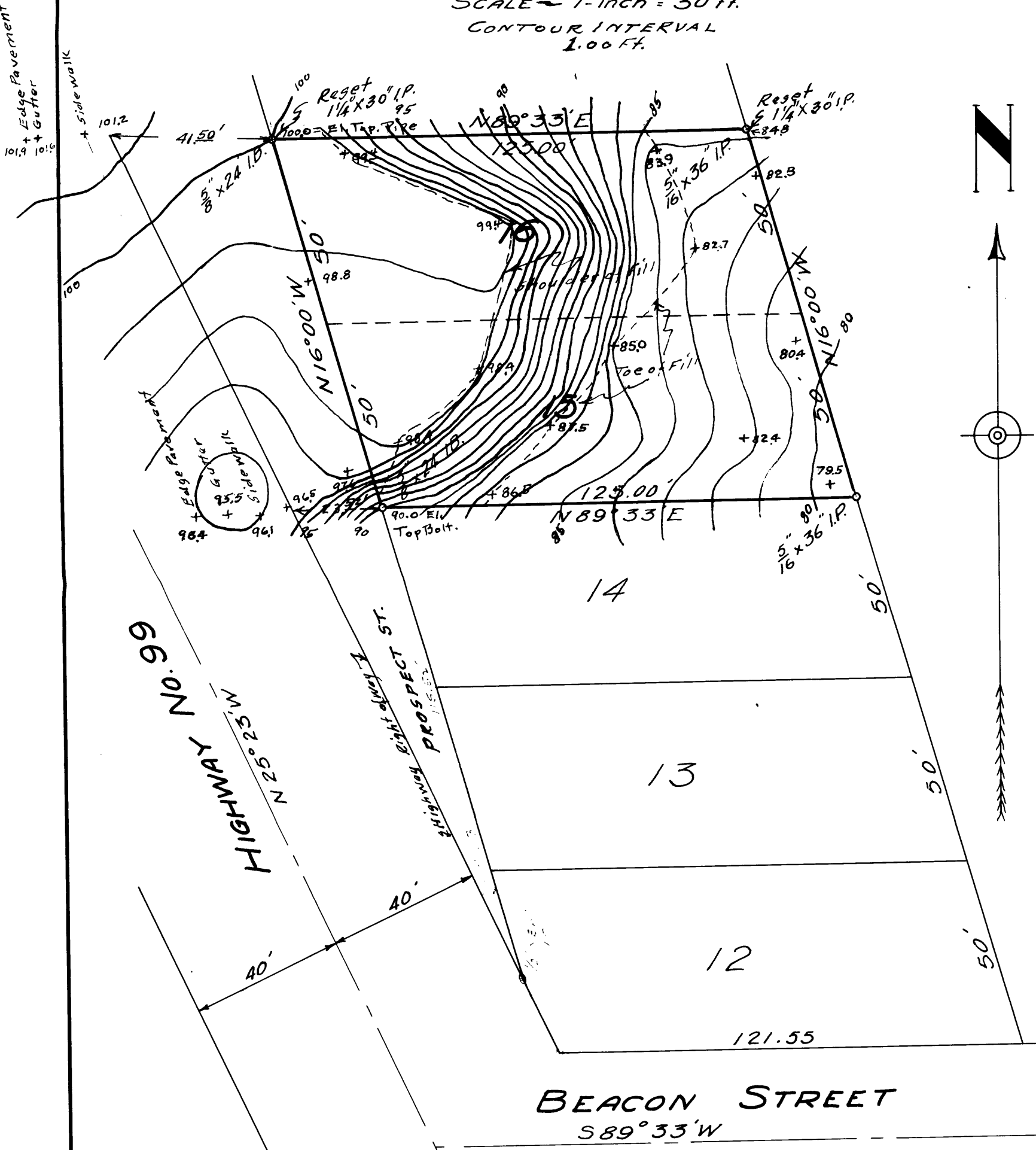
FOR SORRY

COUNTY SURVEYORS FILE DATA
DO NOT REMOVE FROM OFFICE

MAP OF LOTS 15 and 16, BLOCK 2 NORTH PARK ADDITION TO ROSEBURG, OREGON SURVEYED NOV. 1947

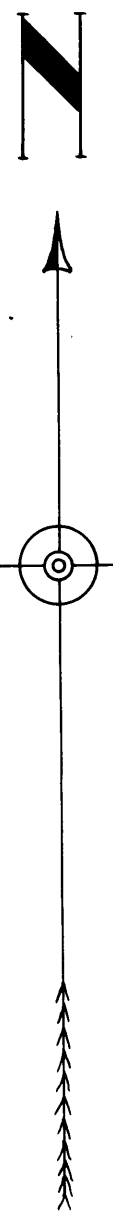
SCALE - 1-inch = 30 ft.

CONTOUR INTERVAL
1.00 Ft.



Edge Pavement
+ Gutter
+ 101.9
+ 101.6

Edge Pavement
+ Gutter
+ 95.5
+ 95.2
+ 94.9
+ 94.6
+ 94.3
+ 94.0
+ 93.7
+ 93.4
+ 93.1
+ 92.8
+ 92.5
+ 92.2
+ 91.9
+ 91.6
+ 91.3
+ 91.0
+ 90.7
+ 90.4
+ 90.1
+ 89.8
+ 89.5
+ 89.2
+ 88.9
+ 88.6
+ 88.3
+ 88.0
+ 87.7
+ 87.4
+ 87.1
+ 86.8
+ 86.5
+ 86.2
+ 85.9
+ 85.6
+ 85.3
+ 85.0
+ 84.7
+ 84.4
+ 84.1
+ 83.8
+ 83.5
+ 83.2
+ 82.9
+ 82.6
+ 82.3
+ 82.0
+ 81.7
+ 81.4
+ 81.1
+ 80.8
+ 80.5
+ 80.2
+ 79.9
+ 79.6
+ 79.3
+ 79.0
+ 78.7
+ 78.4
+ 78.1
+ 77.8
+ 77.5
+ 77.2
+ 76.9
+ 76.6
+ 76.3
+ 76.0
+ 75.7
+ 75.4
+ 75.1
+ 74.8
+ 74.5
+ 74.2
+ 73.9
+ 73.6
+ 73.3
+ 73.0
+ 72.7
+ 72.4
+ 72.1
+ 71.8
+ 71.5
+ 71.2
+ 70.9
+ 70.6
+ 70.3
+ 70.0
+ 69.7
+ 69.4
+ 69.1
+ 68.8
+ 68.5
+ 68.2
+ 67.9
+ 67.6
+ 67.3
+ 67.0
+ 66.7
+ 66.4
+ 66.1
+ 65.8
+ 65.5
+ 65.2
+ 64.9
+ 64.6
+ 64.3
+ 64.0
+ 63.7
+ 63.4
+ 63.1
+ 62.8
+ 62.5
+ 62.2
+ 61.9
+ 61.6
+ 61.3
+ 61.0
+ 60.7
+ 60.4
+ 60.1
+ 59.8
+ 59.5
+ 59.2
+ 58.9
+ 58.6
+ 58.3
+ 58.0
+ 57.7
+ 57.4
+ 57.1
+ 56.8
+ 56.5
+ 56.2
+ 55.9
+ 55.6
+ 55.3
+ 55.0
+ 54.7
+ 54.4
+ 54.1
+ 53.8
+ 53.5
+ 53.2
+ 52.9
+ 52.6
+ 52.3
+ 52.0
+ 51.7
+ 51.4
+ 51.1
+ 50.8
+ 50.5
+ 50.2
+ 49.9
+ 49.6
+ 49.3
+ 49.0
+ 48.7
+ 48.4
+ 48.1
+ 47.8
+ 47.5
+ 47.2
+ 46.9
+ 46.6
+ 46.3
+ 46.0
+ 45.7
+ 45.4
+ 45.1
+ 44.8
+ 44.5
+ 44.2
+ 43.9
+ 43.6
+ 43.3
+ 43.0
+ 42.7
+ 42.4
+ 42.1
+ 41.8
+ 41.5
+ 41.2
+ 40.9
+ 40.6
+ 40.3
+ 40.0
+ 39.7
+ 39.4
+ 39.1
+ 38.8
+ 38.5
+ 38.2
+ 37.9
+ 37.6
+ 37.3
+ 37.0
+ 36.7
+ 36.4
+ 36.1
+ 35.8
+ 35.5
+ 35.2
+ 34.9
+ 34.6
+ 34.3
+ 34.0
+ 33.7
+ 33.4
+ 33.1
+ 32.8
+ 32.5
+ 32.2
+ 31.9
+ 31.6
+ 31.3
+ 31.0
+ 30.7
+ 30.4
+ 30.1
+ 29.8
+ 29.5
+ 29.2
+ 28.9
+ 28.6
+ 28.3
+ 28.0
+ 27.7
+ 27.4
+ 27.1
+ 26.8
+ 26.5
+ 26.2
+ 25.9
+ 25.6
+ 25.3
+ 25.0
+ 24.7
+ 24.4
+ 24.1
+ 23.8
+ 23.5
+ 23.2
+ 22.9
+ 22.6
+ 22.3
+ 22.0
+ 21.7
+ 21.4
+ 21.1
+ 20.8
+ 20.5
+ 20.2
+ 19.9
+ 19.6
+ 19.3
+ 19.0
+ 18.7
+ 18.4
+ 18.1
+ 17.8
+ 17.5
+ 17.2
+ 16.9
+ 16.6
+ 16.3
+ 16.0
+ 15.7
+ 15.4
+ 15.1
+ 14.8
+ 14.5
+ 14.2
+ 13.9
+ 13.6
+ 13.3
+ 13.0
+ 12.7
+ 12.4
+ 12.1
+ 11.8
+ 11.5
+ 11.2
+ 10.9
+ 10.6
+ 10.3
+ 10.0
+ 9.7
+ 9.4
+ 9.1
+ 8.8
+ 8.5
+ 8.2
+ 7.9
+ 7.6
+ 7.3
+ 7.0
+ 6.7
+ 6.4
+ 6.1
+ 5.8
+ 5.5
+ 5.2
+ 4.9
+ 4.6
+ 4.3
+ 4.0
+ 3.7
+ 3.4
+ 3.1
+ 2.8
+ 2.5
+ 2.2
+ 1.9
+ 1.6
+ 1.3
+ 1.0
+ 0.7
+ 0.4
+ 0.1
+ 0.0



HIGHWAY No. 99
N 25° 23' W

Highway Right of Way 1
PROSPECT ST.
N 16° 00' W

BEACON STREET
S 89° 33' W

PLAC
RECEIVED

JUL 1948

COUNTY SURVEYORS
OFFICE



CS FILE FOLDER

CONTAINS

MORE

INFORMATION